

SUPER SERIES

COMMERCIAL MONO & MULTI

R32



Design flexibility thanks to the small dimensions of the machines

Application solutions that meet the installation needs of both small and medium commercial spaces and industrial contexts

- **SEER up to 7.13**
Better seasonal efficiency
- **SCOP up to 4.60**
Better seasonal efficiency
- Compact dimensions up to 6HP
- Better installation flexibility:
splitting level difference I.U.-O.U. 50 m
- Wide availability of indoor units
- New PCB cooling system: a branch of the cooling circuit is passed to the base of the electronic board to avoid overheating

VNA-W = 1-PHASE
VSA-W= 3-PHASE



FDC 100 VNA-W/VSA-W (4HP)
FDC 125 VNA-W/VSA-W (5HP)
FDC 140 VNA-W/VSA-W (6HP)



FDC 200 VSA-W (8HP)
FDC 250 VSA-W (10HP)
FDC 280 VSA-W (12HP)

MONOSPLIT SUPER

CASSETTE 84X84 R32



FDT 100-125-140 VH
Standard white panel
T-PSA-5BW-E

FDT 100-125-140 VH
Anti-draft white panel
T-PSAE-5BW-E

FDT 100-125-140 VH
Standard black panel
T-PSA-5BB-E

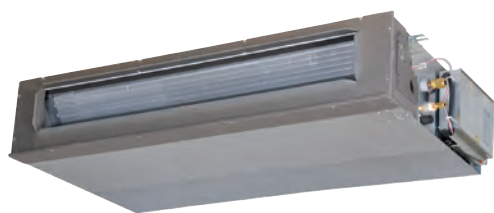
FDT 100-125-140 VH
Black anti-draft panel
T-PSAE-5BB-E

Indoor unit model			FDT 100 VH	FDT 100 VH	FDT 125 VH	FDT 125 VH	FDT 140 VH	FDT 140 VH
Outdoor unit model			FDC 100 VNA-W	FDC 100 VSA-W	FDC 125 VNA-W	FDC 125 VSA-W	FDC 140 VNA-W	FDC 140 VSA-W
Type			DC-Inverter heat pump					
Nominal data								
Rated capacity (T=+35°C)	Cooling	kW	10.00 (4.00~11.20)		12.50 (5.00~14.00)		13.60 (5.00~14.50)	
Rated power input (T=+35°C)		kW	2.73		4.05		4.79	
Rated energy efficiency coefficient		EER ¹	3.66		3.09		2.84	
Rated capacity (T=+7°C)	Heating	kW	11.20 (4.00~12.50)		14.00 (4.00~16.00)		15.50 (4.00~16.50)	
Rated power input (T=+7°C)		kW	2.54		3.59		4.18	
Rated energy performance coefficient		COP ¹	4.41		3.90		3.71	
Seasonal data								
Design load (Pdesignc)	Cooling	kW	10.00		12.50		13.60	
Seasonal energy efficiency index		SEER ²	7.13		6.53		6.17	
Seasonal energy efficiency class		626/20113	A++		-		-	
Annual energy consumption		kWh/y	491		-		-	
Design load (Pdesignh) @ -10°C	Heating (average climate conditions)	kW	8.50		9.80		10.50	
Seasonal performance coefficient		SCOP ²	4.60		4.38		4.42	
Seasonal energy efficiency (ηs)		%	181.00		172.20		173.80	
Seasonal energy efficiency class		626/20113	A++		-		-	
Annual energy consumption		kWh/y	2590		-		-	
Electrical data								
Power supply	Outdoor unit	Ph-V-Hz	1-220~240V-50Hz	3-380~415V-50Hz	1-220~240V-50Hz	3-380~415V-50Hz	1-220~240V-50Hz	3-380~415V-50Hz
Power cable		Type	3 x 6 mm ²	5 x 4 mm ²	3 x 6 mm ²	5 x 4 mm ²	3 x 6 mm ²	5 x 4 mm ²
Connection wires between I.U. and O.U.		nb.	4	4	4	4	4	4
Nominal absorbed current	Cooling	A	13.20	4.20	18.70	6.20	21.50	7.40
	Heating	A	12.40	3.90	16.80	5.50	18.50	6.60
Maximum current		A	24.00	15.00	24.00	15.00	24.00	15.00
Max power input		kW	6.40	10.20	6.40	10.20	6.40	10.20
Refrigerant circuit data								
Refrigerant ⁴		Type (GWP)	R32 (675)					
Quantity of refrigerant pre-charge		Kg	3.3		3.3		3.3	
Tons of CO ₂ equivalent		t	2.228		2.228		2.228	
Diameter of refrigerant pipings liquid/gas		mm (inches)	ø9.52 (3/8") - ø15.88(5/8")		ø9.52 (3/8") - ø15.88(5/8")		ø9.52 (3/8") - ø15.88(5/8")	
Splitting distance	Min/Max	m	50		50		50	
Splitting level difference I.U./O.U.	O.U. above/O.U. below	m	50/15		50/15		50/15	
Splitting distance without additional charge		m	30		30		30	
Additional charge		g/m	54		54		54	
Indoor unit specifications								
Dimensions	LxDxH	mm	840x840x298		840x840x298		840x840x298	
Net weight		Kg	25		25		25	
Sound power level	Max	dB(A)	62		64		64	
Sound pressure level (P-Hi/Hi/Mi/Lo)	Cooling	dB(A)	47/39/36/30		48/41/39/31		48/42/39/32	
	Heating	dB(A)	47/39/36/29		48/41/38/31		48/41/38/31	
Volume of air treated	P-Hi/Hi/Me/Lo	m ³ /h	2220/1560/1380/1020		2280/1680/1500/1080		2280/1740/1560/1140	
Outdoor unit specifications								
Dimensions	LxDxH	mm	970x370x845		970x370x845		970x370x845	
Net weight		Kg	77	78	77	78	77	78
Sound power level	Max	dB(A)	70		71		73	
Sound pressure level	Max	dB(A)	55		56		58	
Volume of air treated	Max	m ³ /h	4500		4500		4500	
Operating range (outdoor temperature)	Cooling	°C	-15~+50		-15~+50		-15~+50	
	Heating	°C	-20~+20		-20~+20		-20~+20	
Accessories								
Decorative panel					T-PSA-5BW-E (white) / T-PSA-5BB-E (black)			
Panel size	LxDxH	mm	950x950x35		950x950x35		950x950x35	
Net weight		Kg	5		5		5	
Wired control	RC-E5 (LCD) / RC-EX3A (touch) / RCH-E3 (simplified)							
IR remote control (corner KIT)	RCN-T-5BW-E2 (white) / RCN-T-5BB-E2 (black)							
Optional parts								
Wi-Fi module	INWFIMH1001R100							
Human sensor (corner KIT)	LB-T-5BW-E (white) / LB-T-5BB-E (black)							
SUPERLINK II interface	SC-ADNA-E							
Anti-draft panel	T-PSAE-5BW-E (white) / T-PSAE-5BB-E (black)							

1. Value measured according to the harmonised standard EN 14511. 2. EU Regulation No. 206/2012 - N. 2281/2016 - Value measured according to the harmonised standard EN 14825. 3. Delegated Regulation (EU) No 626/2011 regarding the new energy labelling of air conditioners. 4. Refrigerant leakage contributes to climate change. When released into the atmosphere, refrigerants with a lower global warming potential (GWP) contribute less to global warming than those with a higher GWP. This appliance contains a refrigerant with a GWP of 675. If 1 kg of this refrigerant fluid were released into the atmosphere, therefore, the impact on global warming would be 675 times higher than 1 kg of CO₂ over a period of 100 years. Under no circumstances should the user try to intervene on the refrigerant circuit or disassemble the product. Always contact qualified personnel if necessary.

MONOSPLIT SUPER

DUCTED MEDIUM STATIC PRESSURE ADJUSTABLE R32



- **max 100**
Fan static pressure
- Unit with bottom or rear air intake
- **280 mm**
Height
- **50 m**
Splitting distance
- ESP function: automatic maintenance of the air flow rate as flow resistance varies
- Filter not included
- Compatible with **AIRZONE** systems

FDUM 100-125-140 VH

Indoor unit model		FDUM 100 VH	FDUM 100 VH	FDUM 125 VH	FDUM 125 VH	FDUM 140 VH	FDUM 140 VH
Outdoor unit model		FDU 100 VNA-W	FDC 100 VSA-W	FDC 125 VNA-W	FDC 125 VSA-W	FDC 140 VNA-W	FDC 140 VSA-W
Type		DC-Inverter heat pump					
Nominal data							
Rated capacity (T=+35°C)	Cooling	kW	10.00 (4.00~11.20)	12.50 (5.00~14.00)	13.60 (5.00~14.50)		
Rated power input (T=+35°C)		kW	2.99	4.36	5.13		
Rated energy efficiency coefficient		EER ¹	3.35	2.87	2.65		
Rated capacity (T=+7°C)	Heating	kW	11.20 (4.00~12.50)	14.00 (4.00~16.00)	15.50 (4.00~16.50)		
Rated power input (T=+7°C)		kW	2.66	3.69	4.21		
Rated energy performance coefficient		COP ¹	4.21	3.79	3.68		
Seasonal data							
Design load (Pdesignc)	Cooling	kW	10.00	12.50	13.60		
Seasonal energy efficiency index		SEER ²	6.11	5.57	5.30		
Seasonal energy efficiency class		626/2011 ³	A++	-	-		
Annual energy consumption		kWh/y	574	-	-		
Design load (Pdesignh) @ -10°C	Heating (average climate conditions)	kW	8.50	9.80	10.50		
Seasonal performance coefficient		SCOP ²	4.19	4.13	4.01		
Seasonal energy efficiency (ηs)		%	164.60	162.20	157.40		
Seasonal energy efficiency class		626/2011 ³	A+	-	-		
Annual energy consumption	kWh/y	2843	-	-			
Electrical data							
Power supply	Outdoor unit	Ph-V-Hz	1-220~240V-50Hz	3-380~415V-50Hz	1-220~240V-50Hz	3-380~415V-50Hz	1-220~240V-50Hz
Power cable		Type	3 x 6 mm ²	5 x 4 mm ²	3 x 6 mm ²	5 x 4 mm ²	3 x 6 mm ²
Connection wires between I.U. and O.U.		nb.	4	4	4	4	4
Nominal absorbed current	Cooling	A	14.30	4.60	20.40	6.80	8.10
	Heating	A	12.70	4.10	17.80	5.90	6.80
Maximum current		A	26.00	17.00	26.00	17.00	27.00
Max power input		kW	6.40	10.20	6.40	10.20	6.40
Refrigerant circuit data							
Refrigerant ⁴	Type (GWP)	R32 (675)					
Quantity of refrigerant pre-charge	Kg	3.3	3.3	3.3	3.3	3.3	3.3
Tons of CO2 equivalent	t	2.228	2.228	2.228	2.228	2.228	2.228
Diameter of refrigerant pipings liquid/gas	mm (inches)	ø9.52 (3/8") - ø15.88(5/8")	ø9.52 (3/8") - ø15.88(5/8")	ø9.52 (3/8") - ø15.88(5/8")	ø9.52 (3/8") - ø15.88(5/8")	ø9.52 (3/8") - ø15.88(5/8")	ø9.52 (3/8") - ø15.88(5/8")
Splitting distance	m	50	50	50	50	50	50
Splitting level difference I.U./O.U.	O.U.: above/O.U. below	m	50/15	50/15	50/15	50/15	50/15
Splitting distance without additional charge	m	30	30	30	30	30	30
Additional charge	g/m	54	54	54	54	54	54
Indoor unit specifications							
Dimensions	LxDxH	mm	1370x740x280	1370x740x280	1370x740x280	1370x740x280	1370x740x280
Net weight	Kg		54	54	54	54	54
Sound power level	Max	dB(A)	65	67	70	70	70
Sound pressure level	P-Hi/Hi/Me/Lo	dB(A)	44/38/36/30	45/40/34/29	47/40/35/30	47/40/35/30	47/40/35/30
Volume of air treated	P-Hi/Hi/Me/Lo	m ³ /h	2160/1680/1500/1140	2340/1920/1560/1200	2880/2100/1680/1320	2880/2100/1680/1320	2880/2100/1680/1320
Fan static pressure	Std/Max	Pa	60/100	60/100	60/100	60/100	60/100
Outdoor unit specifications							
Dimensions	LxDxH	mm	970x370x845	970x370x845	970x370x845	970x370x845	970x370x845
Net weight	Kg		77	78	77	78	77
Sound power level	Max	dB(A)	70	71	71	73	73
Sound pressure level	Max	dB(A)	55	56	56	58	58
Volume of air treated	Max	m ³ /h	4500	4500	4500	4500	4500
Operating range (outdoor temperature)	Cooling	°C		-15~+50			
	Heating	°C		-20~+20			
Accessories							
Wired control	RC-E5 (LCD) / RC-EX3A (touch) / RC-EX23A (touch + zone control) / RCH-E3 (simplified)						
IR remote control (KIT)	RCN-KIT4-E2						
Optional parts							
Wi-Fi module	INWFIMH001R100						
Human sensor (KIT)	LB-KIT2						
SUPERLINK II interface	SC-ADNA-E						
Recovery filter (KIT)	UM-FL3EF						

1. Value measured according to the harmonised standard EN 14511. 2. EU Regulation No. 206/2012 - N. 2281/2016 - Value measured according to the harmonised standard EN 14825. 3. Delegated Regulation (EU) No 626/2011 regarding the new energy labelling of air conditioners. 4. Refrigerant leakage contributes to climate change. When released into the atmosphere, refrigerants with a lower global warming potential (GWP) contribute less to global warming than those with a higher GWP. This appliance contains a refrigerant with a GWP of 675. If 1 kg of this refrigerant fluid were released into the atmosphere, therefore, the impact on global warming would be 675 times higher than 1 kg of CO₂ over a period of 100 years. Under no circumstances should the user try to intervene on the refrigerant circuit or disassemble the product. Always contact qualified personnel if necessary.

MONOSPLIT SUPER

DUCTED HIGH STATIC PRESSURE ADJUSTABLE R32



FDU 100-125-140 VH

- **max 200**
Fan static pressure
- Unit with bottom or rear air intake
- **280 mm**
Height
- **50 m**
Splitting distance
- ESP function: automatic maintenance of the air flow rate as flow resistance varies
- Filter not included
- Compatible with **AIRZONE** systems

Indoor unit model			FDU 100 VH	FDU 100 VH	FDU 125 VH	FDU 125 VH	FDU 140 VH	FDU 140 VH
Outdoor unit model			FDU 100 VNA-W	FDC 100 VSA-W	FDC 125 VNA-W	FDC 125 VSA-W	FDC 140 VNA-W	FDC 140 VSA-W
Type			DC-Inverter heat pump					
Nominal data								
Rated capacity (T=+35°C)	Cooling	kW	10.00 (4.00~11.20)		12.50 (5.00~14.00)		13.60 (5.00~14.50)	
Rated power input (T=+35°C)		kW	2.99		4.36		5.13	
Rated energy efficiency coefficient		EER ¹	3.35		2.87		2.65	
Rated capacity (T=+7°C)	Heating	kW	11.20 (4.00~12.50)		14.00 (4.00~16.00)		15.50 (4.00~16.50)	
Rated power input (T=+7°C)		kW	2.66		3.69		4.21	
Rated energy performance coefficient		COP ¹	4.21		3.79		3.68	
Seasonal data								
Design load (Pdesignc)	Cooling	kW	10.00		12.50		13.60	
Seasonal energy efficiency index		SEER ²	6.11		5.57		5.30	
Seasonal energy efficiency class		626/2011 ³	A++		-		-	
Annual energy consumption		kWh/y	574		-		-	
Design load (Pdesignh) @ -10°C	Heating (average climate conditions)	kW	8.50		9.80		10.50	
Seasonal performance coefficient		SCOP ²	4.19		4.13		4.01	
Seasonal energy efficiency (ηs)		%	164.60		162.20		157.40	
Seasonal energy efficiency class		626/2011 ³	A+		-		-	
Annual energy consumption	kWh/y	2843		-		-		
Electrical data								
Power supply	Outdoor unit	Ph-V-Hz	1-220~240V-50Hz	3-380~415V-50Hz	1-220~240V-50Hz	3-380~415V-50Hz	1-220~240V-50Hz	3-380~415V-50Hz
Power cable		Type	3 x 6 mm ²	5 x 4 mm ²	3 x 6 mm ²	5 x 4 mm ²	3 x 6 mm ²	5 x 4 mm ²
Connection wires between I.U. and O.U.		nb.	4	4	4	4	4	4
Nominal absorbed current	Cooling	A	14.30	4.60	20.40	6.80	23.70	8.10
	Heating	A	12.70	4.10	17.80	5.90	20.30	6.80
Maximum current	A	A	26.00	17.00	26.00	17.00	27.00	18.00
Max power input	kW	kW	6.40	10.20	6.40	10.20	6.40	10.20
Refrigerant circuit data								
Refrigerant ⁴	Type (GWP)	R32 (675)						
Quantity of refrigerant pre-charge	Kg	3.3		3.3		3.3		3.3
Tons of CO2 equivalent	t	2.228		2.228		2.228		2.228
Diameter of refrigerant pipings liquid/gas	mm (inches)	ø9.52 (3/8") - ø15.88(5/8")		ø9.52 (3/8") - ø15.88(5/8")		ø9.52 (3/8") - ø15.88(5/8")		ø9.52 (3/8") - ø15.88(5/8")
Splitting distance	m	50		50		50		50
Splitting level difference I.U./O.U.	O.U.: above/O.U. below	m		50/15		50/15		50/15
Splitting distance without additional charge	m	30		30		30		30
Additional charge	g/m	54		54		54		54
Indoor unit specifications								
Dimensions	LxDxH	mm	1370x740x280		1370x740x280		1370x740x280	
Net weight	Kg	Kg	54		54		54	
Sound power level	Max	dB(A)	65		67		70	
Sound pressure level	P-Hi/Hi/Me/Lo	dB(A)	44/38/36/30		45/40/34/29		47/40/35/30	
Volume of air treated	P-Hi/Hi/Me/Lo	m ³ /h	2160/1680/1500/1140		2340/1920/1560/1200		2880/2100/1680/1320	
Fan static pressure	Std/Max	Pa	60/200		60/200		60/200	
Outdoor unit specifications								
Dimensions	LxDxH	mm	970x370x845		970x370x845		970x370x845	
Net weight	Kg	Kg	77	78	77	78	77	78
Sound power level	Max	dB(A)	70		71		73	
Sound pressure level	Max	dB(A)	55		56		58	
Volume of air treated	Max	m ³ /h	4500		4500		4500	
Operating range (outdoor temperature)	Cooling	°C	-15~+50		-15~+50		-15~+50	
	Heating	°C	-20~+20		-20~+20		-20~+20	
Accessories								
Wired control	RC-E5 (LCD) / RC-EX3A (touch) / RC-EXZ3A (touch + zone control) / RCH-E3 (simplified)							
IR remote control (KIT)	RCN-KIT4-E2							
Optional parts								
Wi-Fi module	INWFIMH001R100							
Human sensor (KIT)	LB-KIT2							
SUPERLINK II interface	SC-ADNA-E							

1. Value measured according to the harmonised standard EN 14511. 2. EU Regulation No. 206/2012 - N. 2281/2016 - Value measured according to the harmonised standard EN 14825. 3. Delegated Regulation (EU) No 626/2011 regarding the new energy labelling of air conditioners. 4. Refrigerant leakage contributes to climate change. When released into the atmosphere, refrigerants with a lower global warming potential (GWP) contribute less to global warming than those with a higher GWP. This appliance contains a refrigerant with a GWP of 675. If 1 kg of this refrigerant fluid were released into the atmosphere, therefore, the impact on global warming would be 675 times higher than 1 kg of CO₂ over a period of 100 years. Under no circumstances should the user try to intervene on the refrigerant circuit or disassemble the product. Always contact qualified personnel if necessary.

MONOSPLIT SUPER

DUCTED HIGH STATIC PRESSURE ADJUSTABLE R32



- **max 200**
Fan static pressure
- Unit with bottom or rear air intake
- **70 m**
Splitting distance (20.00~25.00 kW)
- ESP function: automatic maintenance of the air flow rate as flow resistance varies

FDU 200-250-280 VH

Indoor unit model		FDU 200 VH		FDU 250 VH		FDU 280 VH	
Outdoor unit model		FDC 200 VSA-W		FDC 250 VSA-W		FDC 280 VSA-W	
Type		DC-Inverter heat pump					
Nominal data							
Rated capacity (T=+35°C)	Cooling	kW	20.00 (7.20~22.40)	25.00 (7.20~28.00)	27.00 (6.90~31.50)		
Rated power input (T=+35°C)		kW	6.15	8.25	9.15		
Rated energy efficiency coefficient		EER ¹	3.25	3.03	2.95		
Rated capacity (T=+7°C)	Heating	kW	22.40 (6.50~25.00)	28.00 (6.70~31.50)	30.00 (6.90~33.50)		
Rated power input (T=+7°C)		kW	5.67	7.55	9.12		
Rated energy performance coefficient		COP ¹	3.95	3.75	3.29		
Seasonal data							
Design load (Pdesignc)	Cooling	kW	20.00	25.00	27.00		
Seasonal energy efficiency index		SEER ²	5.90	4.89	4.93		
Seasonal energy efficiency class		626/2011 ³	-	-	-		
Annual energy consumption		kWh/y	-	-	-		
Design load (Pdesignh) @ -10°C	Heating (average climate conditions)	kW	13.70	14.20	16.00		
Seasonal performance coefficient		SCOP ²	3.55	3.54	3.70		
Seasonal energy efficiency (ηs)		%	139.00	138.60	145.00		
Seasonal energy efficiency class		626/2011 ³	-	-	-		
Annual energy consumption	kWh/y	-	-	-			
Electrical data							
Power supply	Outdoor unit	Ph-V-Hz	3-380~415V-50Hz				
Power cable		Type	5 x 6 mm ²	5 x 6 mm ²	5 x 6 mm ²		
Connection wires between I.U. and O.U.		nb.	4	4	4		
Nominal absorbed current	Cooling	A	9.80	12.70	14.20		
	Heating	A	8.90	11.60	14.00		
Maximum current		A	23.00	25.00	25.00		
Max power input		kW	12.00	11.20	11.40		
Refrigerant circuit data							
Refrigerant ⁴	Type (GWP)	R32 (675)					
Quantity of refrigerant pre-charge	Kg	4.3	5.1	5.6			
Tons of CO2 equivalent	t	2.903	3.443	3.780			
Diameter of refrigerant pipings liquid/gas	mm (inches)	ø9.52 (3/8") - ø22.2 (7/8") ⁵	ø12.7 (1/2") - ø22.2 (7/8") ⁵	ø12.7 (1/2") - ø22.2 (7/8") ⁵			
Splitting distance	m	70	70	60			
Splitting level difference I.U./O.U.	O.U.: above/O.U. below	m	50/15	50/15	50/15		
Splitting distance without additional charge	m	30	30	30			
Additional charge	g/m	Consultare il manuale tecnico ⁵					
Indoor unit specifications							
Dimensions	LxDxH	mm	1600x893x379	1600x893x379	1600x893x379		
Net weight		Kg	88	88	88		
Sound power level	Max	dB(A)	78	78	78		
Sound pressure level	P-Hi/Hi/Me/Lo	dB(A)	52/50/47/45	52/50/47/45	52/50/47/45		
Volume of air treated	P-Hi/Hi/Me/Lo	m ³ /h	4800/4320/3840/3360	4800/4320/3840/3360	4800/4320/3840/3360		
Fan static pressure	Std/Max	Pa	72/200	72/200	72/200		
Outdoor unit specifications							
Dimensions	LxDxH	mm	970x370x1505	970x370x1505	970x370x1505		
Net weight		Kg	144	145	155		
Sound power level	Max	dB(A)	74	75	77		
Sound pressure level	Max	dB(A)	59	62	63		
Volume of air treated	Max	m ³ /h	8880	9180	8400		
Operating range (outdoor temperature)	Cooling	°C	-15~+50				
	Heating	°C	-20~+20				
Accessories							
Wired control	RC-E5 (LCD) / RC-EX3A (touch) / RC-EX23A (touch + zone control) / RCH-E3 (simplified)						
IR remote control (KIT)	RCN-KIT4-E2						
Optional parts							
Wi-Fi module	INWFIMHIO01R100						
Human sensor (KIT)	LB-KIT2						
SUPERLINK II interface	SC-ADNA-E						

1. Value measured according to the harmonised standard EN 14511. 2. EU Regulation No. 206/2012 - N. 2281/2016 - Value measured according to the harmonised standard EN 14825. 3. Delegated Regulation (EU) No 626/2011 regarding the new energy labelling of air conditioners. 4. Refrigerant leakage contributes to climate change. When released into the atmosphere, refrigerants with a lower global warming potential (GWP) contribute less to global warming than those with a higher GWP. This appliance contains a refrigerant with a GWP of 675. If 1 kg of this refrigerant fluid were released into the atmosphere, therefore, the impact on global warming would be 675 times higher than 1 kg of CO₂, over a period of 100 years. Under no circumstances should the user try to intervene on the refrigerant circuit or disassemble the product. Always contact qualified personnel if necessary.

MONOSPLIT SUPER

CEILING R32



- Ideal for very large environments, thanks to the particularly wide air flow
- **50 m** Splitting distance
- Versatile installation thanks to drain pipe and refrigerant flexibility
- Polypropylene filter included

FDE 100-125-140 VH

Indoor unit model			FDE 100 VH	FDE 100 VH	FDE 125 VH	FDE 125 VH	FDE 140 VH	FDE 140 VH
Outdoor unit model			FDC 100 VNA-W	FDC 100 VSA-W	FDC 125 VNA-W	FDC 125 VSA-W	FDC 140 VNA-W	FDC 140 VSA-W
Type			DC-Inverter heat pump					
Nominal data								
Rated capacity (T=+35°C)	Cooling	kW	10.00 (4.00~11.20)		12.50 (5.00~14.00)		13.60 (5.00~14.50)	
Rated power input (T=+35°C)		kW	2.85		4.45		5.05	
Rated energy efficiency coefficient		EER ¹	3.51		2.81		2.69	
Rated capacity (T=+7°C)	Heating	kW	11.20 (4.00~12.50)		14.00 (4.00~16.00)		15.50 (4.00~16.50)	
Rated power input (T=+7°C)		kW	2.54		3.74		4.18	
Rated energy performance coefficient		COP ¹	4.41		3.74		3.71	
Seasonal data								
Design load (Pdesignc)	Cooling	kW	10.00		12.50		13.60	
Seasonal energy efficiency index		SEER ²	6.67		6.03		5.76	
Seasonal energy efficiency class		626/2011 ³	A++		-		-	
Annual energy consumption		kWh/y	525		-		-	
Design load (Pdesignh) @ -10°C	Heating (average climate conditions)	kW	8.50		9.80		10.50	
Seasonal performance coefficient		SCOP ²	4.31		4.30		4.24	
Seasonal energy efficiency (%)		%	169.40		169.00		166.60	
Seasonal energy efficiency class		626/2011 ³	A+		-		-	
Annual energy consumption	kWh/y	2764		-		-		
Electrical data								
Power supply	Outdoor unit	Ph-V-Hz	1-220~240V-50Hz	3-380~415V-50Hz	1-220~240V-50Hz	3-380~415V-50Hz	1-220~240V-50Hz	3-380~415V-50Hz
Power cable		Type	3 x 6 mm ²	5 x 4 mm ²	3 x 6 mm ²	5 x 4 mm ²	3 x 6 mm ²	5 x 4 mm ²
Connection wires between I.U. and O.U.		nb.	4	4	4	4	4	4
Nominal absorbed current	Cooling	A	13.80	4.60	20.40	6.90	22.20	7.80
	Heating	A	12.40	4.00	17.50	5.90	18.40	6.50
Maximum current	A		24.00	15.00	24.00	15.00	24.00	15.00
Max power input	kW		6.40	10.20	6.40	10.20	6.40	10.20
Refrigerant circuit data								
Refrigerant ⁴	Type (GWP)	R32 (675)						
Quantity of refrigerant pre-charge	Kg	3.3		3.3		3.3		
Tons of CO2 equivalent	t	2.228		2.228		2.228		
Diameter of refrigerant pipings liquid/gas	mm (inches)	ø9.52 (3/8") - ø15.88(5/8")		ø9.52 (3/8") - ø15.88(5/8")		ø9.52 (3/8") - ø15.88(5/8")		
Splitting distance	m	50		50		50		
Splitting level difference I.U./O.U.	O.U. above/O.U. below	m		50/15		50/15		
Splitting distance without additional charge	m	30		30		30		
Additional charge	g/m	54		54		54		
Indoor unit specifications								
Dimensions	LxDxH	mm	1620x690x250		1620x690x250		1620x690x250	
Net weight	Kg		43		43		43	
Sound power level	Max	dB(A)	64		64		65	
Sound pressure level	P-Hi/Hi/Me/Lo	dB(A)	48/43/38/34		48/45/40/35		49/45/40/36	
Volume of air treated	P-Hi/Hi/Me/Lo	m ³ /h	1920/1560/1260/990		1920/1740/1380/1020		2040/1740/1380/1080	
Outdoor unit specifications								
Dimensions	LxDxH	mm	970x370x845		970x370x845		970x370x845	
Net weight	Kg		77	78	77	78	77	78
Sound power level	Max	dB(A)	70		71		73	
Sound pressure level	Max	dB(A)	55		56		58	
Volume of air treated	Max	m ³ /h	4500		4500		4500	
Operating range (outdoor temperature)	Cooling	°C	-15~+50					
	Heating	°C	-20~+20					
Accessories								
Wired control	RC-E5 (LCD) / RC-EX3A (touch) / RCH-E3 (simplified)							
IR remote control (KIT)	RCN-E-E3							
Optional parts								
Wi-Fi module	INWFIMH001R100							
Human sensor (KIT)	LB-E							
SUPERLINK II interface	SC-ADNA-E							

1. Value measured according to the harmonised standard EN 14511. 2. EU Regulation No. 206/2012 - N. 2281/2016 - Value measured according to the harmonised standard EN 14825. 3. Delegated Regulation (EU) No 626/2011 regarding the new energy labelling of air conditioners. 4. Refrigerant leakage contributes to climate change. When released into the atmosphere, refrigerants with a lower global warming potential (GWP) contribute less to global warming than those with a higher GWP. This appliance contains a refrigerant with a GWP of 675. If 1 kg of this refrigerant fluid were released into the atmosphere, therefore, the impact on global warming would be 675 times higher than 1 kg of CO₂, over a period of 100 years. Under no circumstances should the user try to intervene on the refrigerant circuit or disassemble the product. Always contact qualified personnel if necessary.

MONOSPLIT SUPER

COLUMN R32



FDF 100-125-140 VH

- Ideal for restaurants, shops and offices applications, without false ceiling or high ceilings
- **50 m**
Splitting distance
- Wide and powerful air flow
- Easy transport and installation
- The wired control has a alarm function in case of gas leakage. The gas sensor is on the base of the unit

Indoor unit model			FDF 100 VH	FDF 100 VH	FDF 125 VH	FDF 125 VH	FDF 140 VH	FDF 140 VH
Outdoor unit model			FDC 100 VNA-W	FDC 100 VSA-W	FDC 125 VNA-W	FDC 125 VSA-W	FDC 140 VNA-W	FDC 140 VSA-W
Type			DC-Inverter heat pump					
Control (included)			Wired control TOUCH with gas leak alarm					
Nominal data								
Rated capacity (T=+35°C)	Cooling	kW	10.00 (4.00~11.20)		12.50 (5.00~14.00)		13.60 (5.00~14.50)	
		kW	3.08		4.65		5.35	
		EER ¹	3.25		2.69		2.54	
Rated capacity (T=+7°C)	Heating	kW	11.20 (4.00~12.50)		14.00 (4.00~16.00)		15.50 (4.00~16.50)	
		kW	2.94		4.10		4.98	
		COP ¹	3.81		3.42		3.11	
Seasonal data								
Design load (Pdesignc)	Cooling	kW	10.00		12.50		13.60	
		SEER ²	5.76		5.28		5.13	
		626/2011 ³	A++		-		-	
Annual energy consumption	Cooling	kWh/y	608		-		-	
		Design load (Pdesignh) @ -10°C	8.50		9.80		10.50	
		Seasonal performance coefficient	4.00		3.89		3.92	
Seasonal energy efficiency (ηs)	Heating (average climate conditions)	%	157.00		152.60		153.80	
		626/2011 ³	A+		-		-	
		kWh/y	2973		-		-	
Electrical data								
Power supply	Outdoor unit	Ph-V-Hz	1-220~240V-50Hz	3-380~415V-50Hz	1-220~240V-50Hz	3-380~415V-50Hz	1-220~240V-50Hz	3-380~415V-50Hz
Power cable		Type	3 x 6 mm ²	5 x 4 mm ²	3 x 6 mm ²	5 x 4 mm ²	3 x 6 mm ²	5 x 4 mm ²
Connection wires between I.U. and O.U.		nb.	4	4	4	4	4	4
Nominal absorbed current	Cooling	A	14.90	4.80	21.50	7.20	24.00	8.40
	Heating	A	14.40	4.60	19.20	6.30	22.10	7.90
Maximum current		A	24.00	15.00	24.00	15.00	24.00	15.00
Max power input		kW	6.40	10.20	6.40	10.20	6.40	10.20
Refrigerant circuit data								
Refrigerant ⁴		Type (GWP)	R32 (675)					
Quantity of refrigerant pre-charge		Kg	3.3		3.3		3.3	
Tons of CO ₂ equivalent		t	2.228		2.228		2.228	
Diameter of refrigerant pipings liquid/gas		mm (inches)	ø9.52 (3/8") - ø15.88(5/8")		ø9.52 (3/8") - ø15.88(5/8")		ø9.52 (3/8") - ø15.88(5/8")	
Splitting distance		m	50		50		50	
Splitting level difference I.U./O.U.	O.U. above/O.U. below	m	50/15		50/15		50/15	
Splitting distance without additional charge		m	30		30		30	
Additional charge		g/m	54		54		54	
Indoor unit specifications								
Dimensions	LxDxH	mm	600x329x1850		600x329x1850		600x329x1850	
Net weight		Kg	49		49		49	
Sound power level	Max	dB(A)	65		67		67	
Sound pressure level	P-Hi/Hi/Me/Lo	dB(A)	53/51/49/44		55/51/49/44		55/51/49/44	
Volume of air treated	P-Hi/Hi/Me/Lo	m ³ /h	1620/1560/1380/1140		1740/1560/1380/1140		1740/1560/1380/1140	
Refrigerant gas leak detector			Included					
Outdoor unit specifications								
Dimensions	LxDxH	mm	970x370x845		970x370x845		970x370x845	
Net weight		Kg	77	78	77	78	77	78
Sound power level	Max	dB(A)	70		71		73	
Sound pressure level	Max	dB(A)	55		56		58	
Volume of air treated	Max	m ³ /h	4500		4500		4500	
Operating range (outdoor temperature)	Cooling	°C	-15~+50					
	Heating	°C	-20~+20					
Optional parts								
Wi-Fi module			INWFIMH001R100					
Human sensor (KIT)			LB-KIT2					
SUPERLINK II interface			SC-ADNA-E					
IR remote control (KIT)			RCN-KIT4-E2					

1. Value measured according to the harmonised standard EN 14511. 2. EU Regulation No. 206/2012 - N. 2281/2016 - Value measured according to the harmonised standard EN 14825. 3. Delegated Regulation (EU) No 626/2011 regarding the new energy labelling of air conditioners. 4. Refrigerant leakage contributes to climate change. When released into the atmosphere, refrigerants with a lower global warming potential (GWP) contribute less to global warming than those with a higher GWP. This appliance contains a refrigerant with a GWP of 675. If 1 kg of this refrigerant fluid were released into the atmosphere, therefore, the impact on global warming would be 675 times higher than 1 kg of CO₂, over a period of 100 years. Under no circumstances should the user try to intervene on the refrigerant circuit or disassemble the product. Always contact qualified personnel if necessary.

MONOSPLIT SUPER

WALL R32



SRK 100 ZR-WF

- **339 mm**
Height
- **50 m**
Splitting distance
- **27 dB(A)**
Sound power level, maximum quiet
- Antibacterial treatment on fan
- The powerful air flow is realized with Jet technology
- Ideal for large living rooms and shops
- Equipped with dust and photocatalytic filter

Indoor unit model			SRK 100 ZR-WF		SRK 100 ZR-WF	
Outdoor unit model			FDC 100 VNA-W		FDC 100 VSA-W	
Type			DC-Inverter heat pump			
Control (included)			Remote control			
Nominal data						
Rated capacity (T=+35°C)	Cooling	kW	10.00 (4.00~11.20)			
Rated power input (T=+35°C)		kW	3.19			
Rated energy efficiency coefficient		EER1	3.13			
Rated capacity (T=+7°C)	Heating	kW	11.20 (4.00~12.50)			
Rated power input (T=+7°C)		kW	3.04			
Rated energy performance coefficient		COP1	3.68			
Seasonal data						
Design load (Pdesignc)	Cooling	kW	10.00			
Seasonal energy efficiency index		SEER2	6.13			
Seasonal energy efficiency class		626/20113	A++			
Annual energy consumption		kWh/y	571			
Design load (Pdesignh) @ -10°C	Heating (average climate conditions)	kW	8.50			
Seasonal performance coefficient		SCOP2	4.33			
Seasonal energy efficiency (ηs)		%	170.20			
Seasonal energy efficiency class		626/20113	A+			
Annual energy consumption		kWh/y	2746			
Electrical data						
Power supply	Outdoor unit	Ph-V-Hz	1-220~240V-50Hz		3-380~415V-50Hz	
Power cable		Type	3 x 6 mm ²		5 x 4 mm ²	
Connection wires between I.U. and O.U.		nb.	4		4	
Nominal absorbed current	Cooling	A	14.30		4.80	
	Heating	A	13.60		4.60	
Maximum current		A	24.00		15.00	
Max power input		kW	6.40		10.20	
Refrigerant circuit data						
Refrigerant ⁴	Type (GWP)	R32 (675)				
Quantity of refrigerant pre-charge	Kg	3.3				
Tons of CO ₂ equivalent	t	2.228				
Diameter of refrigerant pipings liquid/gas	mm (inches)	ø9.52 (3/8") - ø15.88(5/8")				
Splitting distance	m	50				
Max splitting level difference I.U./O.U.	O.U. above/O.U. below	m	50/15			
Splitting distance without additional charge		m	30			
Additional charge	g/m	54				
Indoor unit specifications						
Dimensions	LxDxH	mm	1197x262x339			
Net weight		Kg	16.5			
Sound power level	Max	dB(A)	63			
Sound pressure level (Hi/Mi/Lo/U/Lo)	Cooling	dB(A)	48/45/40/27			
	Heating	dB(A)	48/43/38/30			
Volume of air treated (Hi/Mi/Lo/U/Lo)	Cooling	m ³ /h	1470/1278/1056/624			
	Heating	m ³ /h	1650/1392/1146/816			
Outdoor unit specifications						
Dimensions	LxDxH	mm	970x370x845			
Net weight		Kg	77		78	
Sound power level	Max	dB(A)	70			
Sound pressure level	Max	dB(A)	55			
Volume of air treated	Max	m ³ /h	4500			
Operating range (outdoor temperature)	Cooling	°C	-15~+50			
	Heating	°C	-20~+20			
Optional parts						
Wi-Fi module						Included
Interface for home automation and wired control connection ⁵						SC-BIKN2-E

1. Value measured according to the harmonised standard EN 14511. 2. EU Regulation No. 206/2012 - N 2281/2016 - Value measured according to the harmonised standard EN 14825. 3. Delegated Regulation (EU) No 626/2011 regarding the new energy labelling of air conditioners. 4. Refrigerant leakage contributes to climate change. When released into the atmosphere, refrigerants with a lower global warming potential (GWP) contribute less to global warming than those with a higher GWP. This appliance contains a refrigerant with a GWP of 675. If 1 kg of this refrigerant fluid were released into the atmosphere, therefore, the impact on global warming would be 675 times higher than 1 kg of CO₂ over a period of 100 years. Under no circumstances should the user try to intervene on the refrigerant circuit or disassemble the product. Always contact qualified personnel if necessary. 5. Home automation and optional protocols with dedicated interfaces: KNX, Modbus, BACnet.