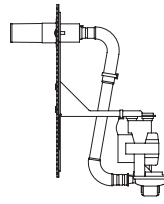


**SAF DX250~1000E6**

# POST-TREATMENT MODULAR UNIT

- SAF DX250E6
- SAF DX350E6
- SAF DX500E6
- SAF DX800E6
- SAF DX1000E6



DXA-DU-E: condensate drain kit up to 60 cm (optional)

**The simple and flexible solution for increasing comfort in buildings, with high energy performance**

The SAF DX units, available in 5 power ratings, is a device designed to increase the comfort capacity of KXZ systems located in buildings, with their high quality profile in terms of energy.

Extremely flexible in that it operates independently from the regenerator, it is able to optimise temperature of the primary air taken in by the SAF regenerators or by similar systems installed in the building. Its compact size and installation separate from the fan unit, solve numerous installation problems; the lack of moving parts makes it possible to install the unit in a wider range of locations and reduces noise to a minimum.

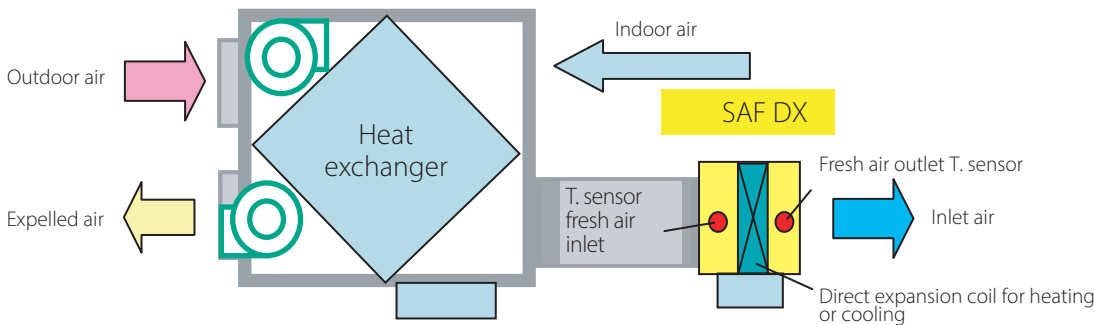
**The SAF DX post-treatment is not intended to replace an indoor unit.**

- Can be combined with all indoor and outdoor units in the KXZ range\*.
- Can be connected to the Superlink network and all the available centralised controls.
- It is possible to use all the KXZ series local controls (to integrate into the system seamlessly and easily).
- The condensate drain pump is available as an optional.
- It allows you to control the inlet temperature or outlet temperature alternatively\*\*.

**Note**

If using the SAF DX, the load index available for the outdoor unit is reduced to 100% of the rated capacity.

The available options vary depending on configurations.



Unit model		SAF DX250E6	SAF DX350E6	SAF DX500E6	SAF DX800E6	SAF DX1000E6
Rated capacity (Cooling)*	kW	2.00	2.80	3.60	5.60	6.30
Rated capacity (Heating)**	kW	1.80	2.20	2.80	4.50	5.60
Power supply		220-240V ~ 50Hz				
Power input (Cooling)	W	7.20				
Power input (Heating)	W	7.20				
Rated current (Cooling)	A	0.05				
Rated current (Heating)	A	0.05				
External dimensions (H x L x D)	mm	315x452x422		315x537x422	315x682x422	315x822x422
Net weight	kg	12.3		13.6	16.1	18.4
Air flow (standard)	m <sup>3</sup> /h	250	350	500	800	1000
Static pressure	Pa	38		66		
Control devices		Wired control RC-E5 Optional; RCH-E3 Optional; RCN-KIT4-E2 Optional				
Refrigerant pipings' diameter	mm (in)	Liquid side: ø 6.35 (1/4") Gas side: ø 9.52 (3/8")		Liquid side: ø 6.35 (1/4") Gas side: ø 12.7 (1/2")		Liquid side: ø 9.52 (3/8") Gas side: ø 15.88 (5/8")

Mode	Inlet air temperature/ventilation		Outdoor temperature		Standard
	DB	WB	DB	WB	
Cooling*	27° C	19° C	35° C	24° C	ISO-T1
Heating**	20° C		7° C	6° C	

\* Measured under the conditions specified in the table.

\*\* ISO-T1-compliant test.