

# LINEUP

# RESIDENTIAL MULTISPLIT R32

|   |                  | kW | 3.00  | 4.00  | 4.50  | 4.00  | 5.00  | 6.00  | 7.10  | 8.00  | 10.00   |
|---|------------------|----|---|---|---|---|---|---|---|---|---|
| Nb. of connectable indoor units   |                  |    | 2-2   | 2-2   | 2-2   | 2-3   | 2-3   | 2-3   | 2-4   | 2-4   | 2-5   |
|   |                  |    |  |  |  |  |  |  |  |  |  |
|   |                  |    | SCM 30 ZS-W   | SCM 40 ZS-W   | SCM 45 ZS-W   | SCM 41 ZS-W   | SCM 50 ZS-W   | SCM 60 ZS-W   | SCM 71 ZS-W   | SCM 80 ZS-W   | SCM 100 ZS-W  |
|    | SRK 20 ZSX-WF(T) |    |   | ✓   | ✓   |   | ✓   | ✓   | ✓   | ✓   | ✓   |
|   | SRK 25 ZSX-WF(T) |    |   | ✓   | ✓   |   | ✓   | ✓   | ✓   | ✓   | ✓   |
|   | SRK 35 ZSX-WF(T) |    |   | ✓   | ✓   |   | ✓   | ✓   | ✓   | ✓   | ✓   |
|   | SRK 50 ZSX-WF(T) |    |   |   |   |   | ✓   | ✓   | ✓   | ✓   | ✓   |
|   | SRK 60 ZSX-WF(T) |    |   |   |   |   |   | ✓   | ✓   | ✓   | ✓   |
|  | SRK 15 ZS-WF(T)  | ✓  |   |   |   | ✓   |   |   |   |   |   |
|   | SRK 20 ZS-WF(T)  | ✓  | ✓   | ✓   | ✓   | ✓   | ✓   | ✓   | ✓   | ✓   | ✓   |
|   | SRK 25 ZS-WF(T)  | ✓  | ✓   | ✓   | ✓   | ✓   | ✓   | ✓   | ✓   | ✓   | ✓   |
|   | SRK 35 ZS-WF(T)  |    | ✓   | ✓   | ✓   | ✓   | ✓   | ✓   | ✓   | ✓   | ✓   |
|   | SRK 50 ZS-WF(T)  |    |   |   |   |   | ✓   | ✓   | ✓   | ✓   | ✓   |
|  | SRK 71 ZR-WF     |    |   |   |   |   |   | ✓   | ✓   | ✓   | ✓   |
|   | SRK 80 ZR-WF     |    |   |   |   |   |   |   |   |   | ✓   |
|  | SKM 15 ZSP-W     | ✓  |   |   |   | ✓   |   |   |   |   |   |
|   | SKM 20 ZSP-W     | ✓  | ✓   | ✓   | ✓   | ✓   | ✓   | ✓   | ✓   | ✓   | ✓   |
|   | SKM 25 ZSP-W     | ✓  | ✓   | ✓   | ✓   | ✓   | ✓   | ✓   | ✓   | ✓   | ✓   |
|   | SKM 35 ZSP-W     |    | ✓   | ✓   | ✓   | ✓   | ✓   | ✓   | ✓   | ✓   | ✓   |
|  | SRF 25 ZS-W      |    | ✓   | ✓   | ✓   | ✓   | ✓   | ✓   | ✓   | ✓   | ✓   |
|   | SRF 35 ZS-W      |    | ✓   | ✓   |   | ✓   | ✓   | ✓   | ✓   | ✓   | ✓   |
|   | SRK 50 ZSX-W     |    |   |   |   |   | ✓   | ✓   | ✓   | ✓   | ✓   |
|  | SRR 25 ZS-W      |    | ✓   | ✓   |   | ✓   | ✓   | ✓   | ✓   | ✓   | ✓   |
|   | SRR 35 ZS-W      |    | ✓   | ✓   |   | ✓   | ✓   | ✓   | ✓   | ✓   | ✓   |
|   | SRR 50 ZS-W      |    |   |   |   |   | ✓   | ✓   | ✓   | ✓   | ✓   |
|   | SRR 60 ZS-W      |    |   |   |   |   |   | ✓   | ✓   | ✓   | ✓   |
|  | FDUM 50 VH       |    |   |   |   | ✓   | ✓   | ✓   | ✓   | ✓   |   |
|  | FDE 50 VH        |    |   |   |   | ✓   | ✓   | ✓   | ✓   | ✓   |   |
|  | FDTC 25 VH1      |    | ✓   | ✓   |   | ✓   | ✓   | ✓   | ✓   | ✓   | ✓   |
|   | FDTC 35 VH1      |    | ✓   | ✓   |   | ✓   | ✓   | ✓   | ✓   | ✓   | ✓   |
|   | FDTC 50 VH       |    |   |   |   | ✓   | ✓   | ✓   | ✓   | ✓   | ✓   |
|   | FDTC 60 VH       |    |   |   |   |   | ✓   | ✓   | ✓   | ✓   | ✓   |

# OUTDOOR UNITS

## HIGH PERFORMANCE

| Outdoor unit | EER* | COP* | SEER*       | SCOP*      |
|--------------|------|------|-------------|------------|
| SCM 30 ZS-W  | 5.77 | 5.41 | 8.60 / A+++ | 4.80 / A++ |
| SCM 40 ZS-W  | 5.00 | 5.42 | 9.10 / A+++ | 4.70 / A++ |
| SCM 45 ZS-W  | 4.69 | 5.00 | 9.10 / A+++ | 4.70 / A++ |
| SCM 41 ZS-W  | 5.56 | 5.56 | 9.20 / A+++ | 4.60 / A++ |
| SCM 50 ZS-W  | 4.90 | 5.17 | 8.80 / A+++ | 4.60 / A++ |
| SCM 60 ZS-W  | 4.55 | 4.86 | 8.80 / A+++ | 4.60 / A++ |
| SCM 71 ZS-W  | 5.00 | 4.91 | 8.30 / A++  | 4.60 / A++ |
| SCM 80 ZS-W  | 4.71 | 4.77 | 8.20 / A++  | 4.60 / A++ |
| SCM 100 ZS-W | 3.70 | 4.41 | 8.60 / A+++ | 4.50 / A+  |

\* The values shown may vary depending on the combinations chosen. For further information, refer to the technical manual.

## OPERATING RANGE

# -15°C / +46°C

Cooling operation

## OPERATING RANGE

# -15°C / +24°C

Heating operation

## HIGHLY COMPACT

High compactness for models 3.00 to 6.00 kW. Easy installation.

### SCM 30-40-45 ZS-W



### SCM 41-50-60 ZS-W



### SCM 71-80 ZS-W



### SCM 100 ZS-W



## INSTALLATION FLEXIBILITY



### SCM 30-40-45 ZS-W

|   |               |        |
|---|---------------|--------|
| L | TOT PIPING    | = 30 m |
| L | MAX O.U.-I.U. | = 25 m |
| H | MAX O.U.-I.U. | = 15 m |
| H | MAX I.U.-I.U. | = 25 m |

### SCM 41-50-60 ZS-W

|   |               |        |
|---|---------------|--------|
| L | TOT PIPING    | = 40 m |
| L | MAX O.U.-I.U. | = 25 m |
| H | MAX O.U.-I.U. | = 15 m |
| H | MAX I.U.-I.U. | = 25 m |

### SCM 71-80 ZS-W

|   |               |        |
|---|---------------|--------|
| L | TOT PIPING    | = 70 m |
| L | MAX O.U.-I.U. | = 25 m |
| H | MAX O.U.-I.U. | = 20 m |
| H | MAX I.U.-I.U. | = 25 m |

### SCM 100 ZS-W

|   |               |        |
|---|---------------|--------|
| L | TOT PIPING    | = 75 m |
| L | MAX O.U.-I.U. | = 25 m |
| H | MAX O.U.-I.U. | = 20 m |
| H | MAX I.U.-I.U. | = 25 m |



# OUTDOOR UNITS

## VERSATILITY

**TOP** 3 kW

3 kW size and 2 indoor units:  
reduced consumption in new  
buildings with low heating demand

**TOP** 4 kW

4 kW size and 3 indoor units:  
reduced consumption in new  
buildings with low heating demand

MHI outdoor units are the efficient choice for new buildings; smaller sizes are more efficient and ensure savings for the customer.

## TOP PERFORMANCE

|                                     | 3 kW 2 connections           | 4 kW 2 connections           | 4 kW 3 connections           | 5 kW 3 connections           | 8 kW 4 connections     | 10 kW 5 connections          |
|-------------------------------------|------------------------------|------------------------------|------------------------------|------------------------------|------------------------|------------------------------|
| Nominal cooling capacity (range kW) | 3 (1.4- <b>5.0</b> )         | 4 (1.5- <b>5.9</b> )         | 4 ( <b>1.4-6.3</b> )         | 5 ( <b>1.7-7.1</b> )         | 8 ( <b>1.8-9.2</b> )   | 10 ( <b>1.7-11.5</b> )       |
| Nominal heating capacity (range kW) | 4 (1.0- <b>5.7</b> )         | 4.5 ( <b>1.0-6.3</b> )       | 4.5 ( <b>1.0-6.9</b> )       | 6 ( <b>1.0-7.5</b> )         | 9.3 ( <b>1.1-9.8</b> ) | 10.5 ( <b>0.9-11.5</b> )     |
| SEER / cooling energy class         | <b>8.6 / A+++</b> <b>TOP</b> | <b>9.1 / A+++</b> <b>TOP</b> | <b>9.2 / A+++</b> <b>TOP</b> | <b>8.8 / A+++</b> <b>TOP</b> | 8.2 / A++              | <b>8.6 / A+++</b> <b>TOP</b> |
| SCOP / heating energy class         | <b>4.8 / A++</b> <b>TOP</b>  | 4.7 / A++                    | <b>4.6 / A++</b> <b>TOP</b>  | 4.6 / A++                    | 4.6 / A++              | 4.5 / A+                     |
| Maximum piping length (m)           | <b>30</b> <b>TOP</b>         | <b>30</b> <b>TOP</b>         | 40                           | 40                           | <b>70</b> <b>TOP</b>   | 75                           |
| Max piping length O.U.-I.U. (m)     | <b>25</b> <b>TOP</b>         | <b>25</b> <b>TOP</b>         | <b>25</b> <b>TOP</b>         | <b>25</b> <b>TOP</b>         | 25                     | <b>25</b> <b>TOP</b>         |
| Maximum height difference (m)       | <b>15</b> <b>TOP</b>         | <b>15</b> <b>TOP</b>         | <b>15</b> <b>TOP</b>         | <b>15</b> <b>TOP</b>         | <b>20</b> <b>TOP</b>   | <b>20</b> <b>TOP</b>         |
| Sound pressure (dB)                 | <b>45</b> <b>TOP</b>         | 46                           | <b>44</b> <b>TOP</b>         | <b>44</b> <b>TOP</b>         | <b>50</b> <b>TOP</b>   | <b>50</b> <b>TOP</b>         |

The values shown are the result of an internal comparative analysis with the main competitors in the relevant market segment. Values updated in September 2025 based on data in the 2025 public catalogues.

Ask your sales representative for more information.

## KEY

**TOP** Top feature, the best data on the market

**★** Silver feature, one of the best figures on the market



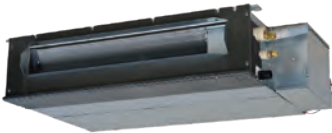
# INDOOR UNITS

## WALL



Integrated WiFi on KIREIA Plus, KIREIA and SRK-ZR; optional for all other models.

## DUCTED LOW STATIC PRESSURE



Condensate drain pump included; condensate pump lift up to 600 mm.

## DUCTED MEDIUM STATIC PRESSURE



MHI is the only brand on the market to offer a Multisplit ducted unit specifically designed for this useful external static pressure range (50-100 Pa).

## CEILING



**TOP** 210 mm

The slimmest Multisplit ceiling unit on the market

FDE: the only ceiling unit on the market equipped with a Human Sensor for energy-saving management (optional).

## CONSOLE



Dual air discharge for improved heat distribution in heating mode.

## ULTRACOMPACT CASSETTE 60X60



FDTC: the only cassette unit with an optional anti-draft panel, featuring special individually adjustable louvers for a comfortable air jet. Air is distributed evenly in the room, avoiding stratification and direct air jets.

**TOP** 14 kg

The lightest model on the market

Fresh air intake, via a dedicated accessory, to introduce additional m<sup>3</sup>/h through the cassette unit.

# OUTDOOR UNITS



SCM 30-40-45 ZS-W



SCM 41-50-60 ZS-W

| Model                                       | SCM 30 ZS-W                             |                       | SCM 40 ZS-W      |                       | SCM 45 ZS-W      |                       | SCM 41 ZS-W      |                       | SCM 50 ZS-W |                       | SCM 60 ZS-W |                       |  |
|---|---|-----------------------|------------------|-----------------------|------------------|-----------------------|------------------|-----------------------|-------------|-----------------------|-------------|-----------------------|--|
| Type  | DC-Inverter Heat pump outdoor unit      |                       |                  |                       |                  |                       |                  |                       |             |                       |             |                       |  |
| Connectable indoor units (min - max)        | nb.                                     | 2 - 2                 |                  | 2 - 2                 |                  | 2 - 2                 |                  | 2 - 3                 |             | 2 - 3                 |             | 2 - 3                 |  |
| Rated connectable capacity I.U. (min - max) | kW                                      | 3.00 - 5.00           |                  | 4.00 - 6.00           |                  | 4.50 - 7.00           |                  | 4.00 - 7.00           |             | 5.00 - 8.50           |             | 6.00 - 11.00          |  |
| <b>Nominal data</b>                         |   |                       |                  |                       |                  |                       |                  |                       |             |                       |             |                       |  |
| Rated capacity (T=+35°C)                    | Cooling                                 | kW                    | 3.00 (1.40~5.00) | 4.00 (1.50~5.90)      | 4.50 (1.50~6.40) | 4.00 (1.40~6.30)      | 5.00 (1.70~7.10) | 6.00 (1.70~7.50)      |             |                       |             |                       |  |
| Rated power input (T=+35°C)                 |   | kW                    | 0.52 (0.32~1.60) | 0.80 (0.34~2.10)      | 0.96 (0.34~2.30) | 0.72 (0.32~1.65)      | 1.02 (0.43~2.15) | 1.32 (0.43~2.28)      |             |                       |             |                       |  |
| Rated energy efficiency coefficient         | Heating                                 | EER <sup>1</sup>      | 5.77             | 5.00                  | 4.69             | 5.56                  | 4.90             | 4.55                  |             |                       |             |                       |  |
| Rated capacity (T=+7°C)                     |   | kW                    | 4.00 (1.00~5.70) | 4.50 (1.00~6.30)      | 5.30 (1.00~6.50) | 4.50 (1.00~6.90)      | 6.00 (1.00~7.50) | 6.80 (1.00~7.80)      |             |                       |             |                       |  |
| Rated power input (T=+7°C)                  | kW                                      | 0.74 (0.25~1.49)      | 0.83 (0.25~1.48) | 1.06 (0.25~1.48)      | 0.81 (0.25~1.58) | 1.16 (0.32~2.50)      | 1.40 (0.32~2.80) |                       |             |                       |             |                       |  |
| Rated energy performance coefficient        | COP <sup>1</sup>                        | 5.41                  | 5.42             | 5.00                  | 5.56             | 5.17                  | 4.86             |                       |             |                       |             |                       |  |
| <b>Seasonal data</b>                        |   |                       |                  |                       |                  |                       |                  |                       |             |                       |             |                       |  |
| Design load (Pdesignc)                      | Cooling                                 | kW                    | 3.00             | 4.00                  | 4.50             | 4.00                  | 5.00             | 6.00                  |             |                       |             |                       |  |
| Seasonal energy efficiency index            |   | SEER <sup>2</sup>     | 8.60             | 9.10                  | 9.10             | 9.20                  | 8.80             | 8.80                  |             |                       |             |                       |  |
| Seasonal energy efficiency class            | 626/2011 <sup>3</sup>                   | A+++                  | A+++             | A+++                  | A+++             | A+++                  | A+++             |                       |             |                       |             |                       |  |
| Annual energy consumption                   | kWh/y                                   | 123                   | 154              | 174                   | 153              | 199                   | 239              |                       |             |                       |             |                       |  |
| Design load (Pdesignh) @ -10°C              | Heating<br>(average climate conditions) | kW                    | 3.30             | 4.10                  | 4.10             | 3.40                  | 4.70             | 4.70                  |             |                       |             |                       |  |
| Seasonal performance coefficient            |   | SCOP <sup>2</sup>     | 4.80             | 4.70                  | 4.70             | 4.60                  | 4.60             | 4.60                  |             |                       |             |                       |  |
| Seasonal energy efficiency (ηs)             | %                                       | 189.00                | 185.00           | 185.00                | 181.00           | 181.00                | 181.00           |                       |             |                       |             |                       |  |
| Seasonal energy efficiency class            | 626/2011 <sup>3</sup>                   | A++                   | A++              | A++                   | A++              | A++                   | A++              |                       |             |                       |             |                       |  |
| Annual energy consumption                   | kWh/y                                   | 962                   | 1222             | 1222                  | 1034             | 1430                  | 1430             |                       |             |                       |             |                       |  |
| <b>Electrical data</b>                      |   |                       |                  |                       |                  |                       |                  |                       |             |                       |             |                       |  |
| Power supply                                | Ph-V-Hz                                 | 1-220~240V-50Hz       |                  |                       |                  |                       |                  |                       |             |                       |             |                       |  |
| Power cable                                 | Type                                    | 3 x 4 mm <sup>2</sup> |                  | 3 x 4 mm <sup>2</sup> |                  | 3 x 4 mm <sup>2</sup> |                  | 3 x 4 mm <sup>2</sup> |             | 3 x 4 mm <sup>2</sup> |             | 3 x 4 mm <sup>2</sup> |  |
| Connection wires between each I.U. and O.U. | nb.                                     | 4                     |                  | 4                     |                  | 4                     |                  | 4                     |             | 4                     |             | 4                     |  |
| Nominal absorbed current                    | Cooling                                 | A                     | 2.50             | 3.50                  | 4.30             | 3.30                  | 4.50             | 5.80                  |             |                       |             |                       |  |
|   | Heating                                 | A                     | 3.40             | 3.70                  | 4.70             | 3.70                  | 5.10             | 6.10                  |             |                       |             |                       |  |
| Max current                                 | A                                       | 14.00                 |                  | 14.00                 |                  | 14.00                 |                  | 15.00                 |             | 15.00                 |             | 15.00                 |  |
| <b>Refrigerant circuit data</b>             |   |                       |                  |                       |                  |                       |                  |                       |             |                       |             |                       |  |
| Refrigerant <sup>4</sup>                    | Type (GWP)                              | R32 (675)             |                  |                       |                  |                       |                  |                       |             |                       |             |                       |  |
| Refrigerant precharge                       | Kg                                      | 1.25                  | 1.40             | 1.40                  | 1.60             | 1.80                  | 1.80             |                       |             |                       |             |                       |  |
| Tons of CO <sub>2</sub> equivalent          | t                                       | 0.844                 | 0.945            | 0.945                 | 1.080            | 1.215                 | 1.215            |                       |             |                       |             |                       |  |
| Refrigerant pipings' diameter               | Liquid                                  | 6.35 (1/4") x 2       |                  | 6.35 (1/4") x 2       |                  | 6.35 (1/4") x 2       |                  | 6.35 (1/4") x 3       |             | 6.35 (1/4") x 3       |             | 6.35 (1/4") x 3       |  |
|   | Gas                                     | 9.52 (3/8") x 2       |                  | 9.52 (3/8") x 2       |                  | 9.52 (3/8") x 2       |                  | 9.52 (3/8") x 3       |             | 9.52 (3/8") x 3       |             | 9.52 (3/8") x 3       |  |
| Total splitting distance                    | m                                       | 30                    |                  | 30                    |                  | 30                    |                  | 40                    |             | 40                    |             | 40                    |  |
| Max length of a single refrigeration line   | m                                       | 25                    |                  | 25                    |                  | 25                    |                  | 25                    |             | 25                    |             | 25                    |  |
| Max splitting level difference I.U./O.U.    | m                                       | 15                    |                  | 15                    |                  | 15                    |                  | 15                    |             | 15                    |             | 15                    |  |
| Max splitting level difference between I.U. | m                                       | 25                    |                  | 25                    |                  | 25                    |                  | 25                    |             | 25                    |             | 25                    |  |
| Max. splitting without additional charge    | m                                       | 30                    |                  | 20                    |                  | 20                    |                  | 40                    |             | 40                    |             | 40                    |  |
| Additional charge                           | g/m                                     | 20                    |                  | 20                    |                  | 20                    |                  | 20                    |             | 20                    |             | 20                    |  |
| <b>Product specifications</b>               |   |                       |                  |                       |                  |                       |                  |                       |             |                       |             |                       |  |
| Dimensions                                  | LxDxH                                   | mm                    | 780(+90)x290x595 | 780(+90)x290x595      | 780(+90)x290x595 | 850(+65)x290x640      | 850(+65)x290x640 | 850(+65)x290x640      |             |                       |             |                       |  |
| Net weight                                  | Kg                                      | 35.5                  | 40               | 40                    | 42.5             | 48.5                  | 48.5             |                       |             |                       |             |                       |  |
| Sound power level                           | Max                                     | dB(A)                 | 64               | 64                    | 65               | 64                    | 64               |                       |             |                       |             |                       |  |
|   | Max                                     | dB(A)                 | 51               | 51                    | 52               | 52                    | 52               |                       |             |                       |             |                       |  |
| Sound pressure level                        | Silent mode                             | dB(A)                 | 45               | 46                    | 46               | 44                    | 44               |                       |             |                       |             |                       |  |
|   | Max                                     | dB(A)                 | 45               | 46                    | 46               | 44                    | 44               |                       |             |                       |             |                       |  |
| Air flow volume                             | m <sup>3</sup> /h                       | 1950                  | 1950             | 1950                  | 2460             | 2460                  | 2460             |                       |             |                       |             |                       |  |
| Operating range (outdoor temperature)       | Cooling                                 | °C                    | -15~46           |                       |                  |                       |                  |                       |             |                       |             |                       |  |
|   | Heating                                 | °C                    | -15~24           |                       |                  |                       |                  |                       |             |                       |             |                       |  |

1. Value measured according to the harmonised standard EN 14511. 2. EU Regulation No. 206/2012 - N.2281/2016 - Value measured according to the harmonised standard EN 14825.

The values refer to the following combinations: **SCM 30 ZS-W** + 2 x SRK 15 ZS-WF / **SCM 40 ZS-W** + 2 x SRK 20 ZSX-W / **SCM 45 ZS-W** + SRK 20 ZSX-W + SRK 25 ZSX-W / **SCM 41 ZS-W** + 3 x SRK 15 ZS-WF / **SCM 50 ZS-W** + 3 x SRK 20 ZSX-W / **SCM 60 ZS-W** + 3 x SRK 20 ZSX-W.

3. Delegated Regulation (EU) No 626/2011 regarding the new energy labelling of air conditioners. 4. Refrigerant leakage contributes to climate change. When released into the atmosphere, refrigerants with a lower global warming potential (GWP) contribute less to global warming than those with a higher GWP. This appliance contains a refrigerant with a GWP of 675. If 1 kg of this refrigerant fluid were released into the atmosphere, therefore, the impact on global warming would be 675 times higher than 1 kg of CO<sub>2</sub>, over a period of 100 years. Under no circumstances should the user try to intervene on the refrigerant circuit or disassemble the product. Always contact qualified personnel if necessary.

# OUTDOOR UNITS



SCM 71-80 ZS-W



SCM 100 ZS-W

| Model                                       |  | SCM 71 ZS-W                             |                       | SCM 80 ZS-W           |                       | SCM 100 ZS-W       |  |
|---|--|---|-----------------------|-----------------------|-----------------------|--------------------|--|
| <b>Type</b>                                 |  | DC-Inverter Heat pump outdoor unit      |                       |                       |                       |                    |  |
| <b>Connectable indoor units (min - max)</b> |  | nb.                                     |                       | 2 - 4                 |                       | *2 - 5             |  |
| Rated connectable capacity I.U. (min - max) |  | kW                                      |                       | 7.00 - 12.50          |                       | 8.00 - 13.50       |  |
| 9.00 - 16.00                                |  |   |                       |                       |                       |                    |  |
| <b>Nominal data</b>                         |  |   |                       |                       |                       |                    |  |
| Rated capacity (T=+35°C)                    |  | Cooling                                 | kW                    | 7.10 (1.80~8.80)      | 8.00 (1.80~9.20)      | 10.00 (1.70~11.50) |  |
| Rated power input (T=+35°C)                 |  |   | kW                    | 1.42 (0.48~2.75)      | 1.70 (0.48~2.83)      | 2.70 (0.48~3.65)   |  |
| Rated energy efficiency coefficient         |  |   | EER <sup>1</sup>      | 5.00                  | 4.71                  | 3.70               |  |
| Rated capacity (T=+7°C)                     |  | Heating                                 | kW                    | 8.60 (1.10~9.40)      | 9.30 (1.10~9.80)      | 10.50 (0.90~11.50) |  |
| Rated power input (T=+7°C)                  |  |   | kW                    | 1.75 (0.35~3.00)      | 1.95 (0.35~3.12)      | 2.38 (0.37~2.90)   |  |
| Rated energy performance coefficient        |  |   | COP <sup>1</sup>      | 4.91                  | 4.77                  | 4.41               |  |
| <b>Seasonal data</b>                        |  |   |                       |                       |                       |                    |  |
| Design load (Pdesignc)                      |  | Cooling                                 | kW                    | 7.10                  | 8.00                  | 10.00              |  |
| Seasonal energy efficiency index            |  |   | SEER <sup>2</sup>     | 8.30                  | 8.20                  | 8.60               |  |
| Seasonal energy efficiency class            |  |   | 626/2011 <sup>3</sup> | A++                   | A++                   | A+++               |  |
| Annual energy consumption                   |  | Heating<br>(average climate conditions) | kWh/y                 | 300                   | 342                   | 407                |  |
| Design load (Pdesignh) @ -10°C              |  |   | kW                    | 6.70                  | 6.70                  | 6.80               |  |
| Seasonal performance coefficient            |  |   | SCOP <sup>2</sup>     | 4.60                  | 4.60                  | 4.50               |  |
| Seasonal energy efficiency (ηs)             |  |   | %                     | 181.00                | 181.00                | 177.00             |  |
| Seasonal energy efficiency class            |  |   | 626/2011 <sup>3</sup> | A++                   | A++                   | A+                 |  |
| Annual energy consumption                   |  | kWh/y                                   | 2038                  | 2038                  | 2116                  |                    |  |
| <b>Electrical data</b>                      |  |   |                       |                       |                       |                    |  |
| Power supply                                |  | Ph-V-Hz                                 | 1-220~240V-50Hz       |                       |                       |                    |  |
| Power cable                                 |  | Type                                    | 3 x 4 mm <sup>2</sup> | 3 x 4 mm <sup>2</sup> | 3 x 4 mm <sup>2</sup> |                    |  |
| Connection wires between each I.U. and O.U. |  | nb.                                     | 4                     | 4                     | 4                     |                    |  |
| Nominal absorbed current                    |  | Cooling                                 | A                     | 6.20                  | 7.50                  | 11.90              |  |
|   |  | Heating                                 | A                     | 7.80                  | 8.60                  | 10.50              |  |
| Max current                                 |  | A                                       | 20.00                 | 20.00                 | 21.00                 |                    |  |
| <b>Refrigerant circuit data</b>             |  |   |                       |                       |                       |                    |  |
| Refrigerant <sup>4</sup>                    |  | Type (GWP)                              | R32 (675)             |                       |                       |                    |  |
| Refrigerant precharge                       |  | Kg                                      | 2.55                  | 2.55                  | 2.98                  |                    |  |
| Tons of CO2 equivalent                      |  | t                                       | 1.721                 | 1.721                 | 2.012                 |                    |  |
| Refrigerant pipings' diameter               |  | Liquid                                  | mm (inch.)            | 6.35 (1/4") x 4       | 6.35 (1/4") x 4       | 6.35 (1/4") x 5    |  |
|   |  | Gas                                     | mm (inch.)            | 9.52 (3/8") x 4       | 9.52 (3/8") x 4       | 9.52 (3/8") x 5    |  |
| Total splitting distance                    |  | m                                       | 70                    | 70                    | 75                    |                    |  |
| Max length of a single refrigeration line   |  | m                                       | 25                    | 25                    | 25                    |                    |  |
| Max splitting level difference I.U./O.U.    |  | m                                       | 20                    | 20                    | 20                    |                    |  |
| Max splitting level difference between I.U. |  | m                                       | 25                    | 25                    | 25                    |                    |  |
| Max. splitting without additional charge    |  | m                                       | 30                    | 30                    | 40                    |                    |  |
| Additional charge                           |  | g/m                                     | 20                    | 20                    | 20                    |                    |  |
| <b>Product specifications</b>               |  |   |                       |                       |                       |                    |  |
| Dimensions                                  |  | LxDxH                                   | mm                    | 880(+73)x340x750      | 880(+73)x340x750      | 970(+73)x370x945   |  |
| Net weight                                  |  | Kg                                      | 61                    | 61                    | 73                    |                    |  |
| Sound power level                           |  | Max                                     | dB(A)                 | 67                    | 67                    | 72                 |  |
| Sound pressure level                        |  | Max                                     | dB(A)                 | 54                    | 54                    | 59                 |  |
|   |  | Silent mode                             | dB(A)                 | 50                    | 50                    | 50                 |  |
| Air flow volume                             |  | Max                                     | m <sup>3</sup> /h     | 3360                  | 3360                  | 4500               |  |
| Operating range (outdoor temperature)       |  | Cooling                                 | °C                    | -15~46                |                       |                    |  |
|   |  | Heating                                 | °C                    | -15~24                |                       |                    |  |

\* Combinations with 2 indoor units have many limitations. Always check the proposed configuration with our Technical Office.

1. Value measured according to the harmonised standard EN 14511. 2. EU Regulation No. 206/2012 - N.2281/2016 - Value measured according to the harmonised standard EN 14825.

The values refer to the following combinations: **SCM 71 ZS-W** + 4 x SRK 20 ZSX-W / **SCM 80 ZS-W** + 4 x SRK 20 ZSX-W / **SCM 100 ZS-W** + 5 x SRK 20 ZSX-W.

3. Delegated Regulation (EU) No 626/2011 regarding the new energy labelling of air conditioners. 4. Refrigerant leakage contributes to climate change. When released into the atmosphere, refrigerants with a lower global warming potential (GWP) contribute less to global warming than those with a higher GWP. This appliance contains a refrigerant with a GWP of 675. If 1 kg of this refrigerant fluid were released into the atmosphere, therefore, the impact on global warming would be 675 times higher than 1 kg of CO<sub>2</sub>, over a period of 100 years. Under no circumstances should the user try to intervene on the refrigerant circuit or disassemble the product. Always contact qualified personnel if necessary.