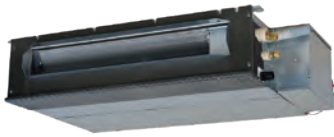


INDOOR UNITS

DUCTED LOW STATIC PRESSURE



SRR 25-35-50-60 ZS-W



OPTIONAL

Condensate drain pump included; condensate pump lift up to 600 mm.



Remote control included

Model			SRR 25 ZS-W	SRR 35 ZS-W	SRR 50 ZS-W	SRR 60 ZS-W
Type			Ducted type indoor unit			
Control			Remote control			
Rated capacity	Cooling	kW	2.50	3.50	5.00	6.00
	Heating	kW	3.40	4.50	5.80	6.80
Electrical data						
Power supply	Outdoor unit	Ph-V-Hz	1-220~240V-50Hz			
Wiring cables I.U./O.U.		nb.	4	4	4	4
Refrigerant circuit data						
Diameter of refrigerant pipings liquid/gas		mm (inch.)	6.35(1/4") - 9.52(3/8")	6.35(1/4") - 9.52(3/8")	6.35(1/4") - 12.74(1/2")	6.35(1/4") - 12.74(1/2")
Product specifications						
Dimensions	LxDxH	mm	750x500x200	750x500x200	950x500x200	950x500x200
Net weight		Kg	20.5	20.5	24	24
Sound power level (Hi)	Cooling	dB(A)	56	57	59	60
	Heating		59	60	61	63
Sound pressure level (Hi/Me/Lo/ULo)	Cooling	dB(A)	37/33/30/24	38/34/31/25	41/37/34/29	44/38/35/30
	Heating		40/37/34/28	42/38/35/29	43/39/37/32	45/41/38/33
Air flow volume (Hi/Me/Lo/ULo)	Cooling	m³/h	570/480/390/270	600/510/420/300	810/660/600/450	870/690/630/480
	Heating		600/540/480/360	630/570/510/390	840/750/660/510	900/780/690/540
Fan static pressure	Std/Max	Pa	5/35	5/35	5/50	5/50
Optional parts						
Wi-Fi module ¹			WF-RAC			
Interface for home automation connection and wired control ²			SC-BIKN2-E			
Kit for recovery from bottom			UT-BAT1EF		UT-BAT2EF	

1. Using the Wi-Fi module excludes the possibility of connecting any other optional accessory.

2. Home automation protocols available: KNX, Modbus, BACnet.

CONSOLE

SRF 25-35 ZS-W
SRF 50 ZSX-W

OPTIONAL

Dual air discharge for improved heat distribution in heating mode.



Remote control included

Model			SRF 25 ZS-W	SRF 35 ZS-W	SRF 50 ZSX-W
Type			Floor type indoor unit		
Control			Remote control		
Rated capacity	Cooling	kW	2.50	3.50	5.00
	Heating	kW	3.40	4.50	5.80
Electrical data					
Power supply	Outdoor unit	Ph-V-Hz	1-220~240V-50Hz		
Wiring cables I.U./O.U.		nb.	4	4	4
Refrigerant circuit data					
Diameter of refrigerant pipings liquid/gas		mm (inch.)	6.35(1/4") - 9.52(3/8")	6.35(1/4") - 9.52(3/8")	6.35(1/4") - 12.74(1/2")
Product specifications					
Dimensions	LxDxH	mm	860x238x600	860x238x600	860x238x600
Net weight		Kg	18	19	19
Sound power level (Hi)	Cooling	dB(A)	50	51	58
	Heating		51	52	58
Sound pressure level (Hi/Me/Lo/ULo)	Cooling	dB(A)	38/32/29/25	40/35/33/29	46/38/33/28
	Heating		39/35/33/39	41/36/35/33	46/41/38/32
Air flow volume (Hi/Me/Lo/ULo)	Cooling	m³/h	540/456/402/348	552/468/438/384	690/576/444/396
	Heating		630/492/462/396	642/498/486/444	720/600/564/456
Optional parts					
Wi-Fi module ¹			WF-RAC		
Interface for home automation connection and wired control ²			SC-BIKN2-E		

1. Using the Wi-Fi module excludes the possibility of connecting any other optional accessory.

2. Home automation protocols available: KNX, Modbus, BACnet.