

FDTC & FDT CASSETTE

TOP 14 kg **FDTC**

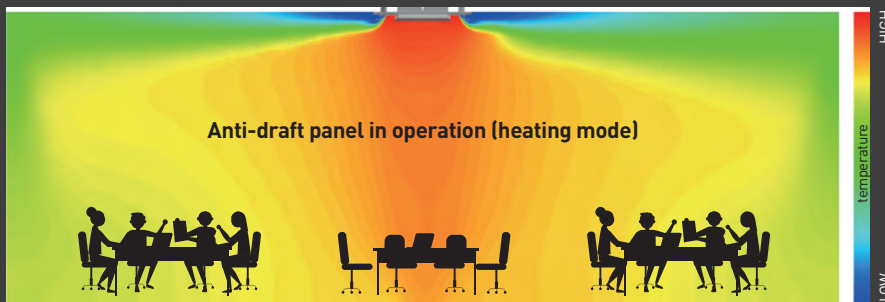
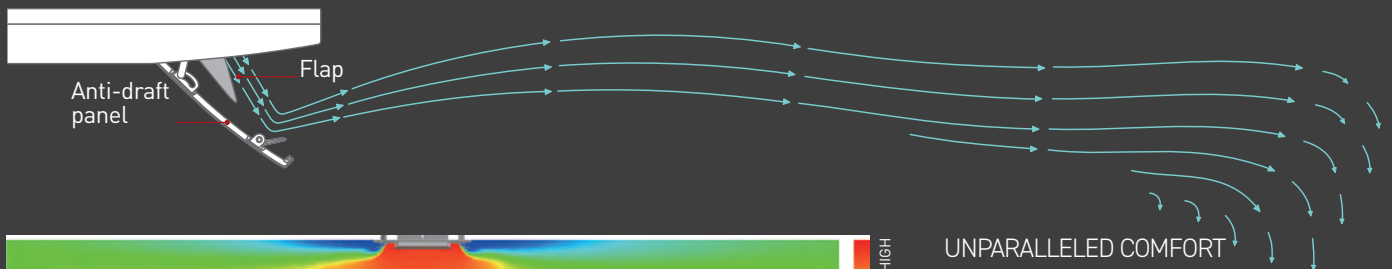
The lightest model on the market

TOP Fresh air intake, via a dedicated accessory, to introduce additional m³/h through the cassette unit.

Anti-draft panel (optional)

Flexible flap control to prevent direct currents.

4 extra flaps, individually controlled in each operating mode: they change the direction of the air flow and prevent the unpleasant sensation of direct currents.

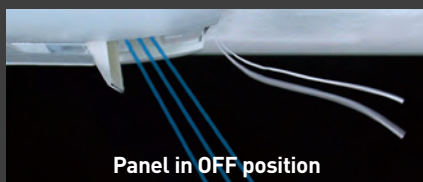


UNPARALLELED COMFORT

The anti-draft panel ensures a uniform air flow and a comfortable temperature in the room, both in cooling and in heating: it can be controlled to instantly eliminate any air currents that are too cold or too hot.

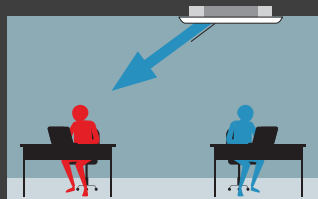
Furthermore, the panel helps the unit to aim the air flow for correct and uniform diffusion in the room.

The additional flaps are closed when the unit is not running.



Individual control of the four flaps (standard and anti-draft panels)

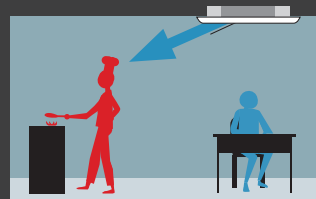
The flap control system lets you direct the air flow as needed



To reach people further away from the unit.



To reach only people who are feeling too hot or too cold.



To reach the warmest parts of the room.

NOTE

The flaps cannot be controlled individually using the IR remote control.

FDTC CASSETTE 60x60

Ultra-compact design

FDTC weighs just 14 kg. The height of the thin panel and the main body is just 248 mm, allowing for very simple installation.

Measurements reduced to 620 mm, ideal for application in European modular ceilings.

JUST 10 MM THICK

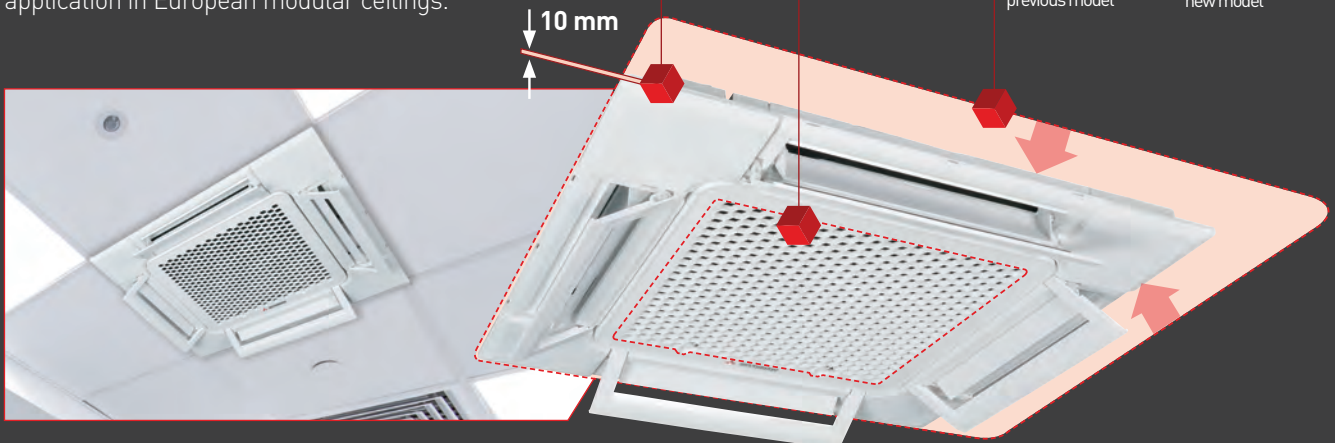
The FDTC panel perfectly adheres to the ceiling because it only protrudes 10 mm.

HONEYCOMB GRILLE

VERY COMPACT DESIGN

The panel dimensions adapt perfectly to European modular ceiling lattices.

 700 mm → 620 mm
previous model new model



Standard linear and honeycomb panels



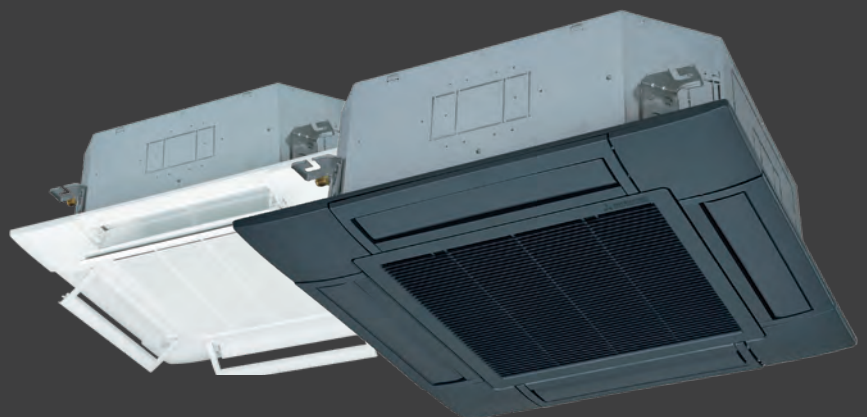
Standard linear panel



Standard honeycomb panel

FDT CASSETTE 84x84

Black and white colors of the standard and anti-draft panels, to expand the design possibilities in shops, offices and restaurants.



Anti-draft white panel

Standard black panel

LIGHT COMMERCIAL

CASSETTE 60X60



FDTC 25-35 VH1/FDTC 40~60 VH
Standard honeycomb panel
TC-PSA-5AW-E



FDTC 25-35 VH1/FDTC 40~60 VH
Anti-draft honeycomb panel
TC-PSAE-5AW-E



OPTIONAL



FDTC 25-35 VH1/FDTC 40~60 VH
Standard linear panel
TC-PSAG-5AW-E



FDTC 25-35 VH1/FDTC 40~60 VH
Anti-draft linear panel
TC-PSAGE-5AW-E



Indoor unit model		FDTC 25 VH1	FDTC 35 VH1	FDTC 40 VH	FDTC 50 VH	FDTC 60 VH	
Outdoor unit model		SRC 25 ZS-W2	SRC 35 ZS-W2	SRC 40 ZSX-W1	SRC 50 ZSX-W3	SRC 60 ZSX-W3	
Type		DC-Inverter Heat pump					
Nominal data							
Rated capacity (T=+35°C)	Cooling	kW	2.50 (0.90~3.20)	3.50 (0.90~4.30)	4.00 (1.10~4.70)	5.00 (1.10~5.60)	5.60 (1.10~6.30)
		kW	0.61 (0.18~0.98)	0.91 (0.18~1.37)	0.98	1.40	1.73
		EER ¹	4.10	3.85	4.08	3.58	3.23
Rated capacity (T=+7°C)	Heating	kW	2.90 (0.90~4.00)	4.25 (0.90~5.60)	4.50 (0.60~5.40)	5.40 (0.60~6.30)	6.70 (0.60~6.70)
		kW	0.71 (0.19~1.31)	1.15 (0.19~1.33)	1.13	1.53	2.14
		COP ¹	4.08	3.70	3.98	3.53	3.13
Seasonal data							
Design load (Pdesignc)	Cooling	kW	2.50	3.50	4.00	5.00	5.60
		SEER ²	6.80	7.10	6.94	6.52	6.45
		626/2011 ³	A++	A++	A++	A++	A++
Annual energy consumption	Heating (average climate conditions)	kWh/y	129	173	202	269	304
		kW	2.40	2.90	4.00	4.30	5.10
		SCOP ²	4.00	4.60	4.37	4.30	4.10
Seasonal energy efficiency class	Heating (average climate conditions)	%	157.00	181.00	171.80	169.00	161.00
		626/2011 ³	A+	A++	A+	A+	A+
		kWh/y	840	883	1283	1401	1744
Electrical data							
Power supply	Outdoor unit	Ph-V-Hz	1-220~240V-50Hz				
Power cable		Type	3 x 2.5 mm ²	3 x 2.5 mm ²	3 x 4 mm ²	3 x 4 mm ²	3 x 4 mm ²
Wiring cables I.U./O.U.		nb.	4	4	4	4	4
Nominal absorbed current	Cooling	A	3.10	4.30	4.30	6.20	7.60
	Heating	A	3.40	5.30	5.00	6.70	9.40
Max current		A	9.00	9.00	15.00	15.00	15.00
Max power input		kW	1.65	1.65	2.60	2.90	2.90
Refrigerant circuit data							
Refrigerant ⁴	Type (GWP)	R32 (675)					
Refrigerant precharge	Kg	0.62	0.78	1.30	1.30	1.30	
Tons of CO ₂ equivalent	t	0.419	0.527	0.878	0.878	0.878	
Diameter of refrigerant pipings liquid/gas	mm (inch.)	6.35(1/4") - 9.52(3/8")	6.35(1/4") - 9.52(3/8")	6.35(1/4") - 12.74(1/2")	6.35(1/4") - 12.74(1/2")	6.35(1/4") - 12.74(1/2")	
Max splitting distance	m	20	20	30	30	30	
Max splitting level difference I.U./O.U.	m	10	10	20	20	20	
Max. splitting without additional charge	m	15	15	15	15	15	
Additional charge	g/m	20	20	20	20	20	
Indoor unit specifications							
Dimensions	LxDxH	mm	570x570x248	570x570x248	570x570x248	570x570x248	570x570x248
Net weight		Kg	13.5	13.5	14	14	14
Sound power level	Max	dB(A)	52	53	59	59	60
Sound pressure level	P-Hi/Hi/Me/Lo	dB(A)	39/36/32/28	41/38/34/30	44/40/35/27	44/40/35/27	46/42/38/31
Air flow volume (P-Hi/Hi/Me/Lo)	Cooling	m ³ /h	510/450/420/360	540/480/450/390	780/660/540/420	780/660/540/420	840/720/600/480
	Heating	m ³ /h	570/510/450/390	600/540/480/420	780/660/540/420	780/660/540/420	840/720/600/480
Outdoor unit specifications							
Dimensions	LxDxH	mm	780(+62)x290x540	780(+62)x290x540	800(+71)x290x640	800(+71)x290x640	800(+71)x290x640
Net weight		Kg	31	34.5	45	45	45
Sound power level	Max	dB(A)	59	62	63	63	65
Sound pressure level	Max	dB(A)	47	50	52	51	53
Air flow volume	Max	m ³ /h	1644	1890	1980	2340	2490
Operating range (outdoor temperature)	Cooling	°C	-15~+46	-15~+46	-15~+46	-15~+46	-15~+46
	Heating	°C	-15~24	-15~24	-20~+20	-15~24	-15~24
Accessories							
Decorative panel		TC-PSA-5AW-E (honeycomb) / TC-PSAG-5AW-E (linear)					
Panel size	LxDxH	mm	620x620x10	620x620x10	620x620x10	620x620x10	620x620x10
Net weight		Kg	2.5	2.5	2.5	2.5	2.5
Wired control	RC-E5 (LCD) / RC-EX3A (touch) / RCH-E3 (simplified)						
IR remote control (corner KIT)	RCN-TC-5AW-E3						
Optional parts							
Wi-Fi module	INWFIMHI001R100						
Human sensor (corner KIT)	LB-TC-5W-E						
SUPERLINK interface II	SC-ADNA-E						
Anti-draft panel	TC-PSAE-5AW-E (honeycomb) / TC-PSAGE-5AW-E (linear)						

1. Value measured according to harmonised standard EN14511-2. EU Regulation N.206/2012 - N.2281/2016 - Value measured according to harmonised standard EN14825. 3. Delegated Regulation UE N.626/2011 with regard to energy labelling indicating the energy consumption of air conditioners. 4. Refrigerant leakage contributes to climate change. When released into the atmosphere, refrigerants with a lower global warming potential (GWP) contribute less to global warming than those with a higher GWP. This appliance contains a refrigerant with a GWP of 675. If 1 kg of this refrigerant fluid were released into the atmosphere, therefore, the impact on global warming would be 675 times higher than 1 kg of CO₂, over a period of 100 years. Under no circumstances should the user try to intervene on the refrigerant circuit or disassemble the product. Always contact qualified personnel if necessary.