

# HYPER SERIES

# R32

COMMERCIAL MONO & MULTI



Operation in heating mode with outside temperature limit of:  $-20^{\circ}\text{C}$

If the outdoor temperature decreases, the supplied power keeps constant

#### ■ 4 capacities

1-Phase 3HP= 7.10 kW  
3-Phase 4~6HP=10.00~14.00 kW

- Minimum outdoor operating temperature
- Super Heat at start-up
- The supplied power is kept also as the outdoor temperature decreases
- **100 m**  
Splitting distance
- Application of Twin Rotary compressors: reduction in size and increase in performance

VNX-W = 1-PHASE  
VSX-W = 3-PHASE



FDC 71 VNX-W (3HP)



FDC100 VSX-W (4HP)  
FDC125 VSX-W (5HP)  
FDC140 VSX-W (6HP)

# MONOSPLIT HYPER

## CASSETTE 84X84 R32



FDT 71-100-125-140 VH  
Standard white panel  
T-PSA-5BW-E

FDT 71-100-125-140 VH  
Anti-draft white panel  
T-PSAE-5BW-E

FDT 71-100-125-140 VH  
Standard black panel  
T-PSA-5BB-E

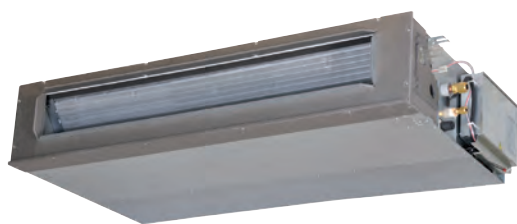
FDT 71-100-125-140 VH  
Black anti-draft panel  
T-PSAE-5BB-E

Indoor unit model		FDT 71 VH		FDT 100 VH		FDT 125 VH		FDT 140 VH		
Outdoor unit model		FDC 71 VNX-W		FDC 100 VSX-W		FDC 125 VSX-W		FDC 140 VSX-W		
Type		DC-Inverter heat pump								
<b>Nominal data</b>										
Rated capacity (T=+35°C)	Cooling	kW	7.10 (3.20~8.00)	10.00 (3.50~11.20)	12.50 (3.50~14.00)	14.00 (3.50~16.00)				
		kW	1.69	2.28	3.21	3.87				
		EER <sup>1</sup>	4.20	4.38	3.89	3.62				
Rated energy efficiency coefficient	Heating	kW	8.00 (3.60~9.00)	11.20 (2.70~16.00)	14.00 (2.70~18.00)	16.00 (2.70~20.00)				
		kW	1.75	2.48	3.43	4.20				
		COP <sup>1</sup>	4.58	4.52	4.08	3.81				
<b>Seasonal data</b>										
Design load (Pdesignc)	Cooling	kW	7.10	10.00	12.50	14.00				
		SEER <sup>2</sup>	7.60	8.00	7.64	7.20				
		626/2011 <sup>3</sup>	A++	A++	-	-				
		kWh/y	327	438	-	-				
Annual energy consumption	Heating	kW	5.80	11.20	14.00	15.50				
		SCOP <sup>2</sup>	4.61	4.44	4.26	4.14				
		%	181.40	174.60	167.40	162.60				
		626/2011 <sup>3</sup>	A++	A+	-	-				
Annual energy consumption	(average climate conditions)	kWh/y	1762	3534	-	-				
		kWh/y	1762	3534	-	-				
<b>Electrical data</b>										
Power supply	Outdoor unit	Ph-V-Hz	1-220~240V-50Hz		3-380~415V-50Hz					
Power cable		Type	3 x 4 mm <sup>2</sup>		5 x 4 mm <sup>2</sup>		5 x 4 mm <sup>2</sup>			
Connection wires between I.U. and O.U.		nb.	4		4		4			
Nominal absorbed current	Cooling	A	7.50		3.90		5.20			
	Heating	A	7.80		4.20		5.60			
Maximum current		A	19.10		14.00		14.00			
Max power input		kW	4.11		8.90		8.90			
<b>Refrigerant circuit data</b>										
Refrigerant <sup>4</sup>	Type (GWP)	R32 (675)								
Quantity of refrigerant pre-charge	Kg	2.75		4		4		4		
Tons of CO <sub>2</sub> equivalent	t	1.856		2.700		2.700		2.700		
Diameter of refrigerant pipings liquid/gas	mm (inches)	ø9.52 (3/8") - ø15.88(5/8")		ø9.52 (3/8") - ø15.88(5/8")		ø9.52 (3/8") - ø15.88(5/8")		ø9.52 (3/8") - ø15.88(5/8")		
Splitting distance	Min/Max	m		3/50		3/100		3/100		
Splitting level difference I.U./O.U.	O.U. above/O.U. below	m		30/15		50/15		50/15		
Splitting distance without additional charge		m		30		30		30		
Additional charge		g/m		54		54		54		
<b>Indoor unit specifications</b>										
Dimensions	LxDxH	mm	840x840x236		840x840x298		840x840x298		840x840x298	
Net weight		Kg	21		25		25		25	
Sound power level	Max	dB(A)	60		62		64		64	
Sound pressure level (P-Hi/Hi/Mi/Lo)	Cooling	dB(A)	46/34/31/26		47/39/36/30		48/41/39/31		48/42/39/32	
	Heating	dB(A)	46/34/31/26		47/39/36/29		48/41/38/31		48/41/38/31	
Volume of air treated	P-Hi/Hi/Me/Lo	m <sup>3</sup> /h	1680/1080/900/720		2220/1560/1380/1020		2280/1680/1500/1080		2280/1740/1560/1140	
<b>Outdoor unit specifications</b>										
Dimensions	LxDxH	mm	880(+88)x340x750		970x370x1300		970x370x1300		970x370x1300	
Net weight		Kg	60		99		99		99	
Sound power level	Max	dB(A)	66		67		70		71	
Sound pressure level	Max	dB(A)	51		53		54		54	
Volume of air treated	Max	m <sup>3</sup> /h	3600		6000		6000		6000	
Operating range (outdoor temperature)	Cooling	°C	-15~+50							
	Heating	°C	-20~+20							
<b>Accessories</b>										
<b>Decorative panel</b>					T-PSA-5BW-E (white) / T-PSA-5BB-E (black)					
Panel size	LxDxH	mm	950x950x35		950x950x35		950x950x35		950x950x35	
Net weight		Kg	5		5		5		5	
Wired control			RC-ES (LCD) / RC-EX3A (touch) / RCH-E3 (simplified)							
IR remote control (corner KIT)			RCN-T-5BW-E2 (white) / RCN-T-5BB-E2 (black)							
<b>Optional parts</b>										
Wi-Fi module			INWFIMH001R100							
Human sensor (corner KIT)			LB-T-5BW-E (white) / LB-T-5BB-E (black)							
SUPERLINK II interface			SC-ADNA-E							
Anti-draft panel			T-PSAE-5BW-E (white) / T-PSAE-5BB-E (black)							

1. Value measured according to the harmonised standard EN 14511. 2. EU Regulation No. 206/2012 - N. 2281/2016 - Value measured according to the harmonised standard EN 14825. 3. Delegated Regulation (EU) No 626/2011 regarding the new energy labelling of air conditioners. 4. Refrigerant leakage contributes to climate change. When released into the atmosphere, refrigerants with a lower global warming potential (GWP) contribute less to global warming than those with a higher GWP. This appliance contains a refrigerant with a GWP of 675. If 1 kg of this refrigerant fluid were released into the atmosphere, therefore, the impact on global warming would be 675 times higher than 1 kg of CO<sub>2</sub> over a period of 100 years. Under no circumstances should the user try to intervene on the refrigerant circuit or disassemble the product. Always contact qualified personnel if necessary.

# MONOSPLIT HYPER

## DUCTED MEDIUM STATIC PRESSURE ADJUSTABLE R32



FDUM 71-100-125-140 VH

- **max 100**  
Fan static pressure
- Unit with bottom or rear air intake (filter not included)
- **280 mm**  
Height
- **100 m**  
Splitting distance
- ESP function: automatic maintenance of the air flow as flow resistance varies
- Filter not included
- Compatible with **AIRZONE** systems

Indoor unit model		FDUM 71 VH	FDUM 100 VH	FDUM 125 VH	FDUM 140 VH	
Outdoor unit model		FDC 71 VNX-W	FDC 100 VSX-W	FDC 125 VSX-W	FDC 140 VSX-W	
Type		DC-Inverter heat pump				
<b>Nominal data</b>						
Rated capacity (T=+35°C)	Cooling	kW	7.10 (3.20~8.00)	10.00 (3.50~11.20)	12.50 (3.50~14.00)	14.00 (3.50~16.00)
Rated power input (T=+35°C)		kW	1.77	2.59	3.49	4.22
Rated energy efficiency coefficient		EER <sup>1</sup>	4.01	3.86	3.58	3.32
Rated capacity (T=+7°C)	Heating	kW	8.00 (3.60~9.00)	11.20 (2.70~16.00)	14.00 (2.70~18.00)	16.00 (2.70~20.00)
Rated power input (T=+7°C)		kW	1.78	2.63	3.61	4.22
Rated energy performance coefficient		COP <sup>1</sup>	4.49	4.26	3.88	3.79
<b>Seasonal data</b>						
Design load (Pdesigngc)	Cooling	kW	7.10	10.00	12.50	14.00
Seasonal energy efficiency index		SEER <sup>2</sup>	6.89	6.29	6.10	5.79
Seasonal energy efficiency class		626/2011 <sup>3</sup>	A++	A++	-	-
Annual energy consumption		kWh/y	361	557	-	-
Design load (Pdesigngh) @ -10°C	Heating (average climate conditions)	kW	6.00	11.20	14.00	15.50
Seasonal performance coefficient		SCOP <sup>2</sup>	4.45	4.13	3.92	3.88
Seasonal energy efficiency (ηs)		%	175.00	162.20	153.80	152.20
Seasonal energy efficiency class		626/2011 <sup>3</sup>	A+	A+	-	-
Annual energy consumption	kWh/y	1889	3800	-	-	
<b>Electrical data</b>						
Power supply	Outdoor unit	Ph-V-Hz	1-220~240V-50Hz	3-380~415V-50Hz		
Power cable		Type	3 x 4 mm <sup>2</sup>	5 x 4 mm <sup>2</sup>	5 x 4 mm <sup>2</sup>	5 x 4 mm <sup>2</sup>
Connection wires between I.U. and O.U.		nb.	4	4	4	4
Nominal absorbed current	Cooling	A	7.90	4.40	5.60	6.70
	Heating	A	7.90	4.40	5.90	6.80
Maximum current		A	20.00	17.00	16.00	17.00
Max power input		kW	4.11	8.90	8.90	8.90
<b>Refrigerant circuit data</b>						
Refrigerant <sup>4</sup>	Type (GWP)	R32 (675)				
Quantity of refrigerant pre-charge	Kg	2.75	4	4	4	
Tons of CO <sub>2</sub> equivalent	t	1.856	2.700	2.700	2.700	
Diameter of refrigerant pipings liquid/gas	mm (inches)	ø9.52 (3/8") - ø15.88(5/8")	ø9.52 (3/8") - ø15.88(5/8")	ø9.52 (3/8") - ø15.88(5/8")	ø9.52 (3/8") - ø15.88(5/8")	
Splitting distance	Min/Max	m	3/50	3/100	3/100	3/100
Splitting level difference I.U./O.U.	O.U: above/O.U. below	m	30/15	50/15	50/15	50/15
Splitting distance without additional charge		m	30	30	30	30
Additional charge		g/m	54	54	54	54
<b>Indoor unit specifications</b>						
Dimensions	LxDxH	mm	950x635x280	1370x740x280	1370x740x280	1370x740x280
Net weight		Kg	34	54	54	54
Sound power level	Max	dB(A)	65	65	67	70
Sound pressure level	P-Hi/Hi/Me/Lo	dB(A)	38/33/29/25	44/38/36/30	45/40/34/29	47/40/35/30
Volume of air treated	P-Hi/Hi/Me/Lo	m <sup>3</sup> /h	1440/1140/900/600	2160/1680/1500/1140	2340/1920/1560/1200	2880/2100/1680/1320
Fan static pressure	Std/Max	Pa	35/100	60/100	60/100	60/100
<b>Outdoor unit specifications</b>						
Dimensions	LxDxH	mm	880(+88)x340x750	970x370x1300	970x370x1300	970x370x1300
Net weight		Kg	60	99	99	99
Sound power level	Max	dB(A)	66	67	70	71
Sound pressure level	Max	dB(A)	51	53	54	54
Volume of air treated	Max	m <sup>3</sup> /h	3600	6000	6000	6000
Operating range (outdoor temperature)	Cooling	°C	-15~+50			
	Heating	°C	-20~+20			
<b>Accessories</b>						
Wired control	RC-E5 (LCD) / RC-EX3A (touch) / RC-EX23A (touch + zone control) / RCH-E3 (simplified)					
IR remote control (KIT)	RCN-KIT4-E2					
<b>Optional parts</b>						
Wi-Fi module	INWFIMH001R100					
Human sensor (KIT)	LB-KIT2					
SUPERLINK II interface	SC-ADNA-E					
Recovery filter (KIT)	UM-FL2EF		UM-FL3EF			

<sup>1</sup> Value measured according to the harmonised standard EN 14511. <sup>2</sup> EU Regulation No. 206/2012 - N. 2281/2016 - Value measured according to the harmonised standard EN 14825. <sup>3</sup> Delegated Regulation (EU) No 626/2011 regarding the new energy labelling of air conditioners. <sup>4</sup> Refrigerant leakage contributes to climate change. When released into the atmosphere, refrigerants with a lower global warming potential (GWP) contribute less to global warming than those with a higher GWP. This appliance contains a refrigerant with a GWP of 675. If 1 kg of this refrigerant fluid were released into the atmosphere, therefore, the impact on global warming would be 675 times higher than 1 kg of CO<sub>2</sub> over a period of 100 years. Under no circumstances should the user try to intervene on the refrigerant circuit or disassemble the product. Always contact qualified personnel if necessary.

# MONOSPLIT HYPER

## DUCTED HIGH STATIC PRESSURE ADJUSTABLE R32



FDU 71-100-125-140 VH

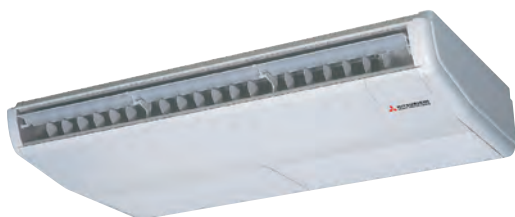
- **max 200**  
Fan static pressure
- Unit with bottom or rear air intake (filter not included)
- **280 mm**  
Height
- **100 m**  
Splitting distance
- ESP function: automatic maintenance of the air flow as flow resistance varies
- Filter not included
- Compatible with **AIRZONE** systems

Indoor unit model		FDU 71 VH	FDU 100 VH	FDU 125 VH	FDU 140 VH	
Outdoor unit model		FDC 71 VNX-W	FDC 100 VSX-W	FDC 125 VSX-W	FDC 140 VSX-W	
Type		DC-Inverter heat pump				
<b>Nominal data</b>						
Rated capacity (T=+35°C)	Cooling	kW	7.10 (3.20~8.00)	10.00 (3.50~11.20)	12.50 (3.50~14.00)	14.00 (3.50~16.00)
Rated power input (T=+35°C)		kW	1.77	2.59	3.49	4.22
Rated energy efficiency coefficient		EER <sup>1</sup>	4.01	3.86	3.58	3.32
Rated capacity (T=+7°C)	Heating	kW	8.00 (3.60~9.00)	11.20 (2.70~16.00)	14.00 (2.70~18.00)	16.00 (2.70~20.00)
Rated power input (T=+7°C)		kW	1.78	2.63	3.61	4.22
Rated energy performance coefficient		COP <sup>1</sup>	4.49	4.26	3.88	3.79
<b>Seasonal data</b>						
Design load (Pdesigngc)	Cooling	kW	7.10	10.00	12.50	14.00
Seasonal energy efficiency index		SEER <sup>2</sup>	6.89	6.29	6.10	5.79
Seasonal energy efficiency class		626/2011 <sup>3</sup>	A++	A++	-	-
Annual energy consumption		kWh/y	361	557	-	-
Design load (Pdesigngh) @ -10°C	Heating (average climate conditions)	kW	6.00	11.20	14.00	15.50
Seasonal performance coefficient		SCOP <sup>2</sup>	4.47	4.13	3.92	3.88
Seasonal energy efficiency (ηs)		%	175.80	162.20	153.80	152.20
Seasonal energy efficiency class		626/2011 <sup>3</sup>	A+	A+	-	-
Annual energy consumption	kWh/y	1878	3800	-	-	
<b>Electrical data</b>						
Power supply	Outdoor unit	Ph-V-Hz	1-220~240V-50Hz		3-380~415V-50Hz	
Power cable		Type	3 x 4 mm <sup>2</sup>	5 x 4 mm <sup>2</sup>	5 x 4 mm <sup>2</sup>	5 x 4 mm <sup>2</sup>
Connection wires between I.U. and O.U.		nb.	4	4	4	4
Nominal absorbed current	Cooling	A	7.90	4.40	5.60	6.70
	Heating	A	7.90	4.40	5.90	6.80
Maximum current		A	20.00	15.00	16.00	17.00
Max power input		kW	4.11	8.90	8.90	8.90
<b>Refrigerant circuit data</b>						
Refrigerant <sup>4</sup>	Type (GWP)	R32 (675)				
Quantity of refrigerant pre-charge	Kg	2.75	4	4	4	
Tons of CO2 equivalent	t	1.856	2.700	2.700	2.700	
Diameter of refrigerant pipings liquid/gas	mm (inches)	9.52 (3/8") - 15.88(5/8")		9.52 (3/8") - 15.88(5/8")		
Splitting distance	Min/Max	m	3/50	3/100	3/100	3/100
Splitting level difference I.U./O.U.	O.U.: above/O.U. below	m	30/15	50/15	50/15	50/15
Splitting distance without additional charge		m	30	30	30	30
Additional charge		g/m	54	54	54	54
<b>Indoor unit specifications</b>						
Dimensions	LxDxH	mm	950x635x280	1370x740x280	1370x740x280	1370x740x280
Net weight		Kg	34	54	54	54
Sound power level	Max	dB(A)	65	65	67	70
Sound pressure level	P-Hi/Hi/Me/Lo	dB(A)	38/33/29/25	44/38/36/30	45/40/34/29	47/40/35/30
Volume of air treated	P-Hi/Hi/Me/Lo	m <sup>3</sup> /h	1440/1140/900/600	2160/1680/1500/1140	2340/1920/1560/1200	2880/2100/1680/1320
Fan static pressure	Std/Max	Pa	35/200	60/200	60/200	60/200
<b>Outdoor unit specifications</b>						
Dimensions	LxDxH	mm	880(+88)x340x750	970x370x1300	970x370x1300	970x370x1300
Net weight		Kg	60	99	99	99
Sound power level	Max	dB(A)	66	67	70	71
Sound pressure level	Max	dB(A)	51	53	54	54
Volume of air treated	Max	m <sup>3</sup> /h	3600	6000	6000	6000
Operating range (outdoor temperature)	Cooling	°C	-15~+50			
	Heating	°C	-20~+20			
<b>Accessories</b>						
Wired control	RC-E5 (LCD) / RC-EX3A (touch) / RC-EXZ3A (touch + zone control) / RCH-E3 (simplified)					
IR remote control (KIT)	RCN-KIT4-E2					
<b>Optional parts</b>						
Wi-Fi module	INWFIMHI001R100					
Human sensor (KIT)	LB-KIT2					
SUPERLINK II interface	SC-ADNA-E					

1. Value measured according to the harmonised standard EN 14511. 2. EU Regulation No. 206/2012 - N. 2281/2016 - Value measured according to the harmonised standard EN 14825. 3. Delegated Regulation (EU) No 626/2011 regarding the new energy labelling of air conditioners. 4. Refrigerant leakage contributes to climate change. When released into the atmosphere, refrigerants with a lower global warming potential (GWP) contribute less to global warming than those with a higher GWP. This appliance contains a refrigerant with a GWP of 675. If 1 kg of this refrigerant fluid were released into the atmosphere, therefore, the impact on global warming would be 675 times higher than 1 kg of CO<sub>2</sub>, over a period of 100 years. Under no circumstances should the user try to intervene on the refrigerant circuit or disassemble the product. Always contact qualified personnel if necessary.

# MONOSPLIT HYPER

## CEILING R32



OPTIONAL

- Ideal for very large environments, thanks to the particularly wide air flow
- **100 m** Splitting distance
- Versatile installation thanks to drain pipe and refrigerant flexibility
- Polypropylene filter included

FDE 71-100-125-140 VH

Indoor unit model		FDE 71 VH	FDE 100 VH	FDE 125 VH	FDE 140 VH	
Outdoor unit model		FDC 71 VNX-W	FDC 100 VSX-W	FDC 125 VSX-W	FDC 140 VSX-W	
Type		DC-Inverter heat pump				
<b>Nominal data</b>						
Rated capacity (T=+35°C)	Cooling	kW	7.10 (3.20~8.00)	10.00 (3.50~11.20)	12.50 (3.50~14.00)	14.00 (3.50~16.00)
Rated power input (T=+35°C)		kW	1.87	2.33	3.34	4.08
Rated energy efficiency coefficient		EER <sup>1</sup>	3.80	4.29	3.75	3.43
Rated capacity (T=+7°C)	Heating	kW	8.00 (3.60~9.00)	11.20 (2.70~16.00)	14.00 (2.70~18.00)	16.00 (2.70~20.00)
Rated power input (T=+7°C)		kW	1.87	2.52	3.74	4.41
Rated energy performance coefficient		COP <sup>1</sup>	4.28	4.45	3.74	3.63
<b>Seasonal data</b>						
Design load (Pdesignc)	Cooling	kW	7.10	10.00	12.50	14.00
Seasonal energy efficiency index		SEER <sup>2</sup>	6.58	7.00	6.53	6.29
Seasonal energy efficiency class		626/2011 <sup>3</sup>	A++	A++	-	-
Annual energy consumption		kWh/y	378	501	-	-
Design load (Pdesignh) @ -10°C	Heating (average climate conditions)	kW	6.00	11.20	14.00	15.50
Seasonal performance coefficient		SCOP <sup>2</sup>	4.45	4.24	4.02	3.96
Seasonal energy efficiency (ηs)		%	175.00	166.60	157.80	155.40
Seasonal energy efficiency class		626/2011 <sup>3</sup>	A+	A+	-	-
Annual energy consumption	kWh/y	1889	3700	-	-	
<b>Electrical data</b>						
Power supply	Outdoor unit	Ph-V-Hz	1-220~240V-50Hz	3-380~415V-50Hz		
Power cable		Type	3 x 4 mm <sup>2</sup>	5 x 4 mm <sup>2</sup>	5 x 4 mm <sup>2</sup>	5 x 4 mm <sup>2</sup>
Connection wires between I.U. and O.U.		nb.	4	4	4	4
Nominal absorbed current	Cooling	A	8.30	4.00	5.40	6.50
	Heating	A	8.30	4.20	6.10	7.20
Maximum current	A	19.10	14.00	14.00	14.00	
Max power input	kW	4.11	8.90	8.90	8.90	
<b>Refrigerant circuit data</b>						
Refrigerant <sup>4</sup>	Type (GWP)	R32 (675)				
Quantity of refrigerant pre-charge	Kg	2.75	4	4	4	
Tons of CO2 equivalent	t	1.856	2.700	2.700	2.700	
Diameter of refrigerant pipings liquid/gas	mm (inches)	ø9.52 (3/8") - ø15.88(5/8")	ø9.52 (3/8") - ø15.88(5/8")	ø9.52 (3/8") - ø15.88(5/8")	ø9.52 (3/8") - ø15.88(5/8")	
Splitting distance	Min/Max	m	3/50	3/100	3/100	3/100
Splitting level difference I.U./O.U.	O.U. above/O.U. below	m	30/15	50/15	50/15	50/15
Splitting distance without additional charge	m	30	30	30	30	
Additional charge	g/m	54	54	54	54	
<b>Indoor unit specifications</b>						
Dimensions	LxDxH	mm	1320x690x210	1620x690x250	1620x690x250	1620x690x250
Net weight	Kg	33	43	43	43	
Sound power level	Max	dB(A)	60	64	64	65
Sound pressure level	P-Hi/Hi/Me/Lo	dB(A)	47/41/37/32	48/43/38/34	48/45/40/35	49/45/40/36
Volume of air treated	P-Hi/Hi/Me/Lo	m <sup>3</sup> /h	1200/960/780/600	1920/1560/1260/990	1920/1740/1380/1020	2040/1740/1380/1080
<b>Outdoor unit specifications</b>						
Dimensions	LxDxH	mm	880(+88)x340x750	970x370x1300	970x370x1300	970x370x1300
Net weight	Kg	60	99	99	99	
Sound power level	Max	dB(A)	66	67	70	71
Sound pressure level	Max	dB(A)	51	53	54	54
Volume of air treated	Max	m <sup>3</sup> /h	3600	6000	6000	6000
Operating range (outdoor temperature)	Cooling	°C	-15~+50			
	Heating	°C	-20~+20			
<b>Accessories</b>						
Wired control	RC-E5 (LCD) / RC-EX3A (touch) / RCH-E3 (simplified)					
IR remote control (KIT)	RCN-E-E3					
<b>Optional parts</b>						
Wi-Fi module	INWFIMHI001R100					
Human sensor (KIT)	LB-E					
SUPERLINK II interface	SC-ADNA-E					

1. Value measured according to the harmonised standard EN 14511. 2. EU Regulation No. 206/2012 - N.2281/2016 - Value measured according to the harmonised standard EN 14825. 3. Delegated Regulation (EU) No 626/2011 regarding the new energy labelling of air conditioners. 4. Refrigerant leakage contributes to climate change. When released into the atmosphere, refrigerants with a lower global warming potential (GWP) contribute less to global warming than those with a higher GWP. This appliance contains a refrigerant with a GWP of 675. If 1 kg of this refrigerant fluid were released into the atmosphere, therefore, the impact on global warming would be 675 times higher than 1 kg of CO<sub>2</sub> over a period of 100 years. Under no circumstances should the user try to intervene on the refrigerant circuit or disassemble the product. Always contact qualified personnel if necessary.

# MONOSPLIT HYPER

## COLUMN R32



FDf 71-100-125-140 VH

- Ideal for restaurants, shops and offices applications, without false ceiling or high ceilings
- **100 m**  
Splitting distance
- Wide and powerful air flow
- Easy transport and installation
- The wired control has a alarm function in case of gas leakage. The gas sensor is on the base of the unit

Indoor unit model		FDf 71 VH		FDf 100 VH		FDf 125 VH		FDf 140 VH	
Outdoor unit model		FDC 71 VNX-W		FDC 100 VSX-W		FDC 125 VSX-W		FDC 140 VSX-W	
Type		DC-Inverter heat pump							
Control (included)		Wired control TOUCH with gas leak alarm							
<b>Nominal data</b>									
Rated capacity (T=+35°C)	Cooling	kW	7.10 (3.20~8.00)	10.00 (3.50~11.20)	12.50 (3.50~14.00)	14.00 (3.50~16.00)			
Rated power input (T=+35°C)		kW	1.97	2.66	3.74	4.62			
Rated energy efficiency coefficient		EER <sup>1</sup>	3.61	3.76	3.34	3.03			
Rated capacity (T=+7°C)	Heating	kW	8.00 (3.60~9.00)	11.20 (2.70~16.00)	14.00 (2.70~18.00)	16.00 (2.70~20.00)			
Rated power input (T=+7°C)		kW	2.21	2.95	3.88	4.70			
Rated energy performance coefficient		COP <sup>1</sup>	3.62	3.80	3.61	3.41			
<b>Seasonal data</b>									
Design load (Pdesignc)	Cooling	kW	7.10	10.00	12.50	14.00			
Seasonal energy efficiency index		SEER <sup>2</sup>	6.25	6.10	5.95	5.75			
Seasonal energy efficiency class		626/2011 <sup>3</sup>	A++	A++	-	-			
Annual energy consumption		kWh/y	376	574	-	-			
Design load (Pdesignh) @ -10°C	Heating (average climate conditions)	kW	6.00	11.20	14.00	15.50			
Seasonal performance coefficient		SCOP <sup>2</sup>	4.03	3.84	3.78	3.65			
Seasonal energy efficiency (ηs)		%	158.20	158.20	148.20	143.00			
Seasonal energy efficiency class		626/2011 <sup>3</sup>	A+	A	-	-			
Annual energy consumption		kWh/y	2085	4084	-	-			
<b>Electrical data</b>									
Power supply	Outdoor unit	Ph-V-Hz	1-220~240V-50Hz			3-380~415V-50Hz			
Power cable		Type	3 x 4 mm <sup>2</sup>		5 x 4 mm <sup>2</sup>	5 x 4 mm <sup>2</sup>		5 x 4 mm <sup>2</sup>	
Connection wires between I.U. and O.U.		nb.	4		4	4		4	
Nominal absorbed current	Cooling	A	8.70		4.60	6.10		7.40	
	Heating	A	9.90		5.00	6.40		7.70	
Maximum current		A	19.10		14.00	14.00		14.00	
Max power input		kW	4.11		8.90	8.90		8.90	
<b>Refrigerant circuit data</b>									
Refrigerant <sup>4</sup>	Type (GWP)	R32 (675)							
Quantity of refrigerant pre-charge	Kg	2.75		4	4	4		4	
Tons of CO <sub>2</sub> equivalent	t	1.856		2.700	2.700	2.700		2.700	
Diameter of refrigerant pipings liquid/gas	mm (inches)	ø9.52 (3/8") - ø15.88(5/8")		ø9.52 (3/8") - ø15.88(5/8")		ø9.52 (3/8") - ø15.88(5/8")		ø9.52 (3/8") - ø15.88(5/8")	
Splitting distance	Min/Max	m		-/50		3/100		3/100	
Splitting level difference I.U./O.U.	O.U. above/O.U. below	m		30/15		50/15		50/15	
Splitting distance without additional charge		m		30		30		30	
Additional charge	g/m	54		54		54		54	
<b>Indoor unit specifications</b>									
Dimensions	LxDxH	mm		600x329x1850		600x329x1850		600x329x1850	
Net weight		Kg		47		49		49	
Sound power level	Max	dB(A)		55		65		67	
Sound pressure level	P-Hi/Hi/Me/Lo	dB(A)		42/39/35/33		53/51/49/44		55/51/49/44	
Volume of air treated	P-Hi/Hi/Me/Lo	m <sup>3</sup> /h		1080/960/840/720		1620/1560/1380/1140		1740/1560/1380/1140	
Refrigerant gas leak detector		INCLUDED							
<b>Outdoor unit specifications</b>									
Dimensions	LxDxH	mm		880(+88)x340x750		970x370x1300		970x370x1300	
Net weight		Kg		60		99		99	
Sound power level	Max	dB(A)		66		67		70	
Sound pressure level	Max	dB(A)		51		53		54	
Volume of air treated	Max	m <sup>3</sup> /h		3600		6000		6000	
Operating range (outdoor temperature)	Cooling	°C		-15~+50					
	Heating	°C		-20~+20					
<b>Optional parts</b>									
Wi-Fi module		INWFIMH1001R100							
Human sensor (KIT)		LB-KIT2							
SUPERLINK II interface		SC-ADNA-E							
IR remote control (KIT)		RCN-KIT4-E2							

1. Value measured according to the harmonised standard EN 14511. 2. EU Regulation No. 206/2012 - N. 2281/2016 - Value measured according to the harmonised standard EN 14825. 3. Delegated Regulation (EU) No 626/2011 regarding the new energy labelling of air conditioners. 4. Refrigerant leakage contributes to climate change. When released into the atmosphere, refrigerants with a lower global warming potential (GWP) contribute less to global warming than those with a higher GWP. This appliance contains a refrigerant with a GWP of 675. If 1 kg of this refrigerant fluid were released into the atmosphere, therefore, the impact on global warming would be 675 times higher than 1 kg of CO<sub>2</sub>, over a period of 100 years. Under no circumstances should the user try to intervene on the refrigerant circuit or disassemble the product. Always contact qualified personnel if necessary.

# MONOSPLIT HYPER

## WALL R32



SRK 71-100 ZR-WF

- **339 mm**  
Height
- **100 m**  
Splitting distance
- **28 dB(A)**  
Sound power level (7.10 kW),  
maximum quiet
- Antibacterial treatment on fan
- The powerful air flow is realized with Jet technology
- Ideal for large living rooms and shops
- Equipped with dust and photocatalytic filters

Indoor unit model			SRK 71 ZR-WF	SRK 100 ZR-WF
Outdoor unit model			FDC 71 VNX-W	FDC 100 VSX-W
Type			DC-Inverter heat pump	
Control (included)			Remote control	
<b>Nominal data</b>				
Rated capacity (T=+35°C)	Cooling	kW	7.10 (3.20~8.00)	10.00 (3.50~11.20)
Rated power input (T=+35°C)		kW	1.93	2.74
Rated energy efficiency coefficient		EER1	3.68	3.65
Rated capacity (T=+7°C)	Heating	kW	8.00 (3.60~9.00)	11.20 (2.70~16.00)
Rated power input (T=+7°C)		kW	1.78	3.04
Rated energy performance coefficient		COP1	4.49	3.69
<b>Seasonal data</b>				
Design load (Pdesignc)	Cooling	kW	7.10	10.00
Seasonal energy efficiency index		SEER2	6.80	6.54
Seasonal energy efficiency class		626/20113	A++	A++
Annual energy consumption		kWh/y	366	535
Design load (Pdesignh) @ -10°C	Heating (average climate conditions)	kW	5.80	10.50
Seasonal performance coefficient		SCOP2	4.56	4.01
Seasonal energy efficiency (ηs)		%	179.40	157.40
Seasonal energy efficiency class		626/20113	A+	A
Annual energy consumption		kWh/y	1782	3671
<b>Electrical data</b>				
Power supply	Outdoor unit	Ph-V-Hz	1-220~240V-50Hz	3-380~415V-50Hz
Power cable		Type	3 x 4 mm <sup>2</sup>	5 x 4 mm <sup>2</sup>
Connection wires between I.U. and O.U.		nb.	4	4
Nominal absorbed current	Cooling	A	8.60	4.70
	Heating	A	7.90	5.10
Maximum current		A	19.10	14.00
Max power input		kW	4.11	8.90
<b>Refrigerant circuit data</b>				
Refrigerant <sup>4</sup>	Type (GWP)	R32 (675)		
Quantity of refrigerant pre-charge	Kg	2.75	4	
Tons of CO <sub>2</sub> equivalent	t	1.856	2.700	
Diameter of refrigerant pipings liquid/gas	mm (inches)	ø9.52 (3/8") - ø15.88(5/8")		ø9.52 (3/8") - ø15.88(5/8")
Splitting distance	Min/Max	m	3/50	3/100
Max splitting level difference I.U./O.U.	O.U. above/O.U. below	m	30/15	50/15
Splitting distance without additional charge		m	30	30
Additional charge	g/m		54	54
<b>Indoor unit specifications</b>				
Dimensions	LxDxH	mm	1197x262x339	1197x262x339
Net weight		Kg	15.5	16.5
Sound power level	Max	dB(A)	60	63
Sound pressure level (Hi/Mi/Lo/ULo)	Cooling	dB(A)	44/41/37/25	48/45/40/27
	Heating		46/39/35/28	48/43/38/30
Volume of air treated (Hi/Mi/Lo/ULo)	Cooling	m <sup>3</sup> /h	1230/1116/972/624	1470/1278/1056/624
	Heating		1500/1188/1038/798	1650/1392/1146/816
<b>Outdoor unit specifications</b>				
Dimensions	LxDxH	mm	880(+88)x340x750	970x370x1300
Net weight		Kg	60	99
Sound power level	Max	dB(A)	66	67
Sound pressure level	Max	dB(A)	51	53
Volume of air treated	Max	m <sup>3</sup> /h	3600	6000
Operating range (outdoor temperature)	Cooling	°C	-15~+50	
	Heating	°C	-20~+20	
<b>Optional parts</b>				
Wi-Fi module				Included
Interface for home automation and wired control connection <sup>5</sup>				SC-BIKN2-E

1. Value measured according to the harmonised standard EN 14511. 2. EU Regulation No. 206/2012 - N.2281/2016 - Value measured according to the harmonised standard EN 14825. 3. Delegated Regulation (EU) No 626/2011 regarding the new energy labelling of air conditioners. 4. Refrigerant leakage contributes to climate change. When released into the atmosphere, refrigerants with a lower global warming potential (GWP) contribute less to global warming than those with a higher GWP. This appliance contains a refrigerant with a GWP of 675. If 1 kg of this refrigerant fluid were released into the atmosphere, therefore, the impact on global warming would be 675 times higher than 1 kg of CO<sub>2</sub> over a period of 100 years. Under no circumstances should the user try to intervene on the refrigerant circuit or disassemble the product. Always contact qualified personnel if necessary. 5. Home automation and optional protocols with dedicated interfaces: KNX, Modbus, BACnet.