





LINEUP

HYDROLUTION EZY IDROSPLIT R290

		NEW		NEW		NEW	
Outdoor units kW	6.00	8.00	10.00	10.00	14.00	14.00	
	1-Phase	1-Phase	1-Phase	3-Phase	1-Phase	3-Phase	
							
	FDCM 60 VNX-P	FDCM 71 VNX-P	FDCM 100 VNX-P	FDCM 100 VSX-P	FDCM 140 VNX-P	FDCM 140 VSX-P	
Indoor units							

NEW	Hydrobox*						
			✓	✓	✓	✓	✓
	HBM140 Controller included Pump included Idrosplit (R290 only in the outdoor unit)						

NEW	All in One*						
			✓	✓	✓	✓	✓
	HMM100 Controller included Pump included 180L DHW tank included Idrosplit (R290 only in the outdoor unit)						

*** The HBM (Hydrobox) and HMM (All in One) indoor units can be connected to both **Idrosplit systems: R290 and R32.****

LINEUP

HYDROLUTION EZY IDROSPLIT R32

Outdoor units kW	10.00	16.00
	1-Phase  FDCM 100 VNX-W	1-Phase  FDCM 140 VNX-W

Indoor units

Hydrobox*

NEW



HBM140

Controller included
Pump included
Idrosplit (R32 only in the outdoor unit)



All in One*

NEW



HMM100

Controller included
Pump included
180L DHW tank included
Idrosplit (R32 only in the outdoor unit)



HYDROLUTION EZY FLEXIBLE R32

Outdoor units kW	16.00	
	1-Phase  FDCM 140 VNX-W	Modularity up to 8 units

HYDROLUTION EZY IDROSPLIT WITH PRODUCTION OF DOMESTIC HOT WATER



Heating, cooling
and DHW
production



EZY IDROSPLIT HYDROBOX, ALL IN ONE R290 E R32, EZY FLEXIBLE



R290
NEW REFRIGERANT

■ 6 kW ■ 8 kW
■ 10 kW ■ 14 kW **NEW**



NEW



R290
NEW REFRIGERANT

■ 6 kW ■ 8 kW
■ 10 kW ■ 14 kW **NEW**

Idrosplit Hydrobox R290

Idrosplit Hydrobox for heating and cooling.
Or, combined with one or more buffer tanks to
also produce DHW. Supply-water temperature in
heating and DHW up to 75°C.

Idrosplit All in One R290

Idrosplit All in One for heating, cooling and DHW
production (integrated 180-litre tank).
Supply-water temperature in heating and DHW up
to 75°C. No additional components to install other
than the indoor module.



R32

■ 10 kW ■ 16 kW



NEW



R32

■ 10 kW

Idrosplit Hydrobox R32

Idrosplit Hydrobox for heating and cooling.
Or, combined with one or more buffer tanks to
also produce DHW.

Idrosplit All in One R32

Idrosplit All in One for heating, cooling and DHW
production (10 kW, integrated 180-litre tank).
No additional components to install other than the
indoor module.



R32

■ 16 kW

Flexible R32

Monobloc unit that can
be installed as a single
unit or in cascade up to 8
modules, with dedicated
on-site systems.

Gas Free

All units are gas free: the refrigeration
circuit is in the external unit, no refrigerant
in the internal unit and inside the rooms,
only water.

EZY R290

The EZY air-to-water heat pump absorbs heat from outdoor air and transfers it indoors for space heating and hot water production. It is an energy-efficient and eco-friendly solution that uses renewable energy to reduce electricity consumption.

 **75°C**

EZY can produce hot water with an outlet temperature up to 75°C, guaranteed down to -25°C outdoor temperature

A+++

Energy class at 35°C, the temperature suitable for underfloor heating

 **-25°C**

Operating range: in heating from -25°C to 43°C; in cooling from 15°C to 45°C

A++

Energy class at 55°C, the temperature suitable for heating via fan-coils

With the shift from R32 to R290, in addition to higher supply temperatures, there has been an overall improvement in performance and efficiency.

+12,4%

Example: 10 kW size, **COP A7°C/W35°C**

Maximum quietness

In silent mode, the minimum sound pressure level is just 36 dB(A) for the 6.0 kW size and 37 dB(A) for the 8.0 kW size

OUTDOOR UNITS

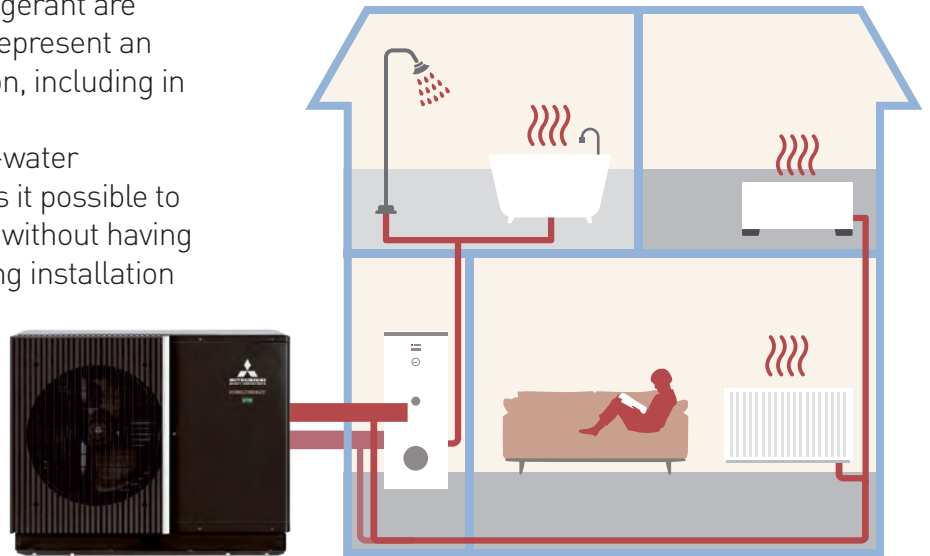
- FDCM 60 VNX-P
- FDCM 71 VNX-P
- FDCM 100 VN(S)X-P
- FDCM 140 VN(S)X-P



FOR RADIATOR SYSTEMS

EZY heat pumps with R290 refrigerant are compatible with radiators and represent an efficient and sustainable solution, including in refurbishment projects.

The ability to reach high supply-water temperatures up to 75°C makes it possible to adapt them to existing systems without having to replace the radiators, reducing installation time and costs



R290 heat pumps can produce hot water at very high temperatures, ideal for radiators and therefore for installation on existing systems.



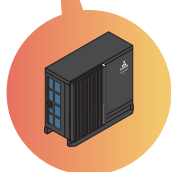
TECHNOLOGY AND DESIGN

The Hydrolution EZY series features an elegant raven-black exterior that integrates perfectly with the surrounding environment.

Its design blends harmoniously with contemporary urban spaces and a variety of settings, while also standing out with a bold, high-impact presence.

BEST INSTALLATION POSSIBILITIES

For safe installation of an R290 heat pump, a specific 'clearance zone' with defined safety characteristics must be taken into account. MHI has conducted accurate tests in the event of a leak; the result is the possibility to reduce the baseline prescription that, in the absence of tests, everyone must follow. This leads to the **best installation possibilities on the market**.



CLEARANCE ZONE

To install an R290 heat pump, it is essential to respect a specific clearance zone to ensure safety and efficiency, including proper ventilation and the absence of ignition sources or openings such as doors and windows..

SAFE TO USE

The refrigerant is fully contained within the outdoor unit, ensuring safe use of the A3 refrigerant.

EASY TO INSTALL

Idrosplit unit with minimal connections and a less complex installation process.

EZY INSTALLATION ADVANTAGES

As an Idrosplit unit, EZY requires a minimal number of hydronic and electrical connections.

Compared to split systems, it offers a Plug & Play installation process in retrofit applications.

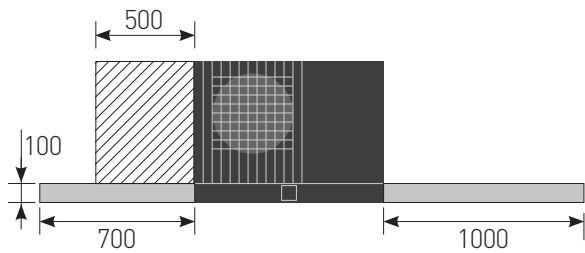
BEST IN CLASS

Mitsubishi Heavy Industries' research centre has carried out **studies and real-life simulations** on the dispersion of R290 gas in the event of a leak, **establishing clearance zones precisely** based on the measured data. This results in reduced minimum distances compared to other competitors in all possible installation Types.

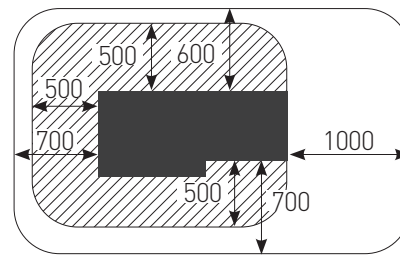
Maximum flexibility, minimal restriction: EZY Idrosplit is the R290 heat pump with the widest installation possibilities on the market.

INSTALLATION ON A FLAT ROOF AND IN OPEN SPACE

FRONT VIEW

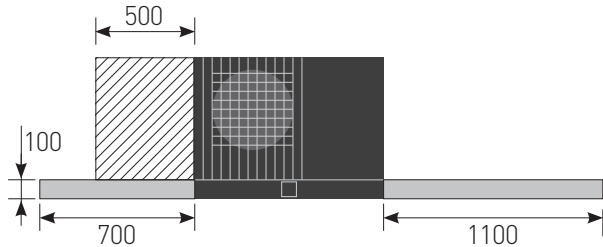


TOP VIEW

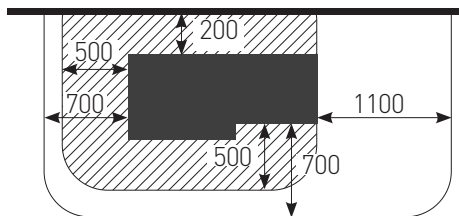


GROUND INSTALLATION IN FRONT OF A WALL

FRONT VIEW



TOP VIEW



- 100 mm from the base of the unit
- Unit height

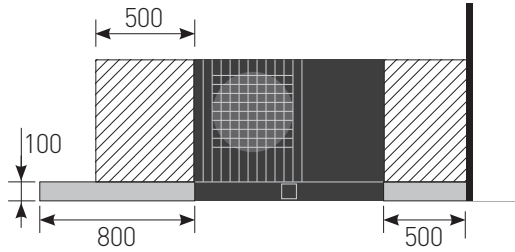
The clearance zones shown above apply exclusively to units FDCM 60 VNX-P and FDCM 71 VNX-P.

For all other models, consult the relevant manuals. Always refer to the specific technical documentation for each unit for further installation guidance.

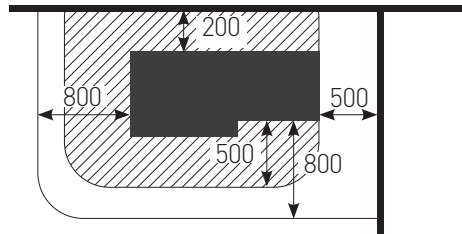
EZY R290 / CLEARANCE ZONES

INSTALLATION IN A WALL CORNER - RIGHT SIDE

FRONT VIEW

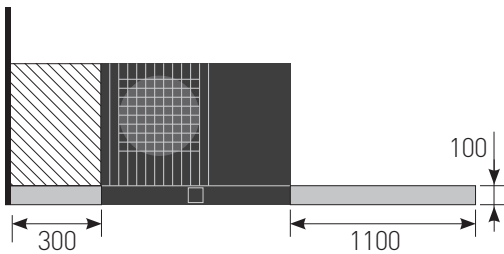


TOP VIEW

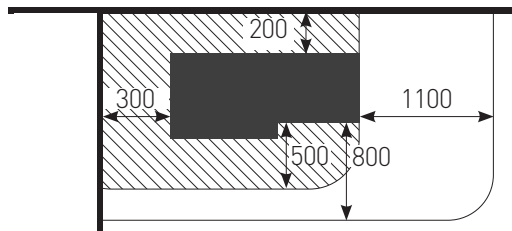


INSTALLATION IN A WALL CORNER - LEFT SIDE

FRONT VIEW

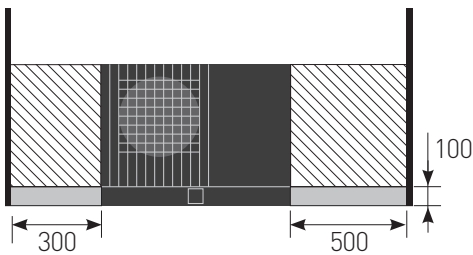


TOP VIEW

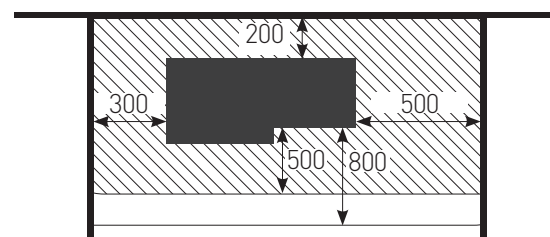




INSTALLATION WITH WALLS ON THE RIGHT, LEFT AND BEHIND

FRONT VIEW



TOP VIEW



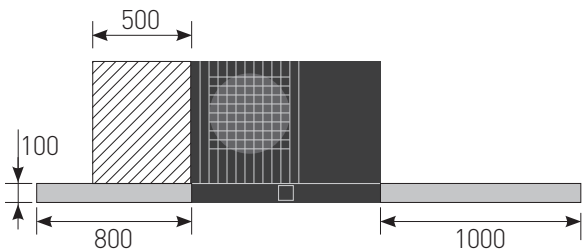
-  100 mm from the base of the unit
-  Unit height

The **clearance zones** shown above apply exclusively to units **FDCM 60 VNX-P** and **FDCM 71 VNX-P**.

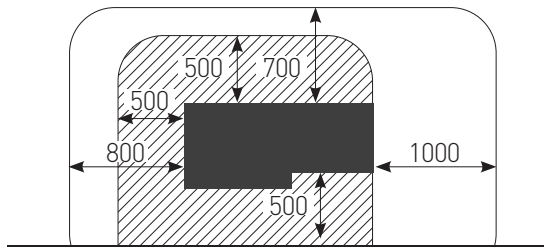
For all other models, consult the relevant manuals. Always refer to the specific technical documentation for each unit for further installation guidance.

INSTALLATION IN FRONT OF A BUILDING WALL

FRONT VIEW

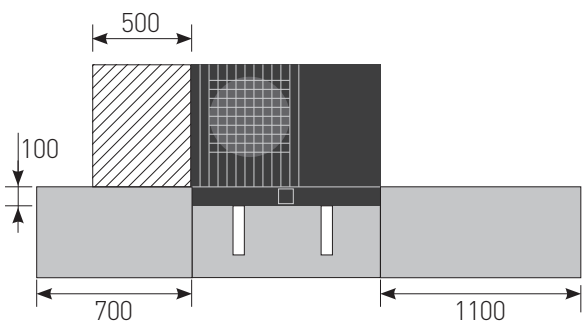


TOP VIEW

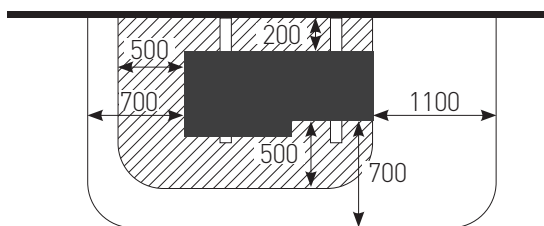


INSTALLATION RAISED FROM THE GROUND

FRONT VIEW

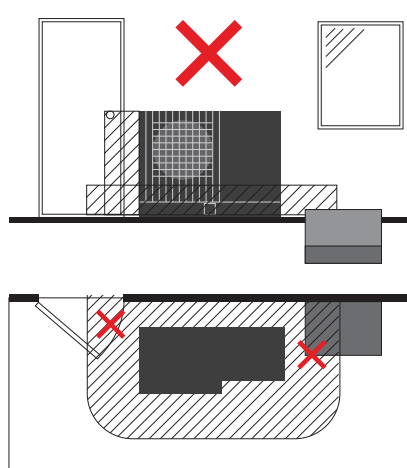
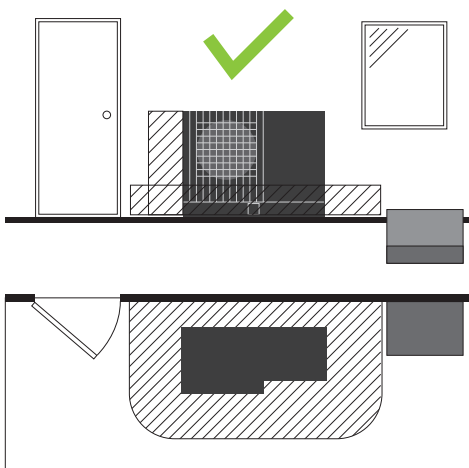


TOP VIEW



RESPECT OPENINGS

In the protection zone there must be no building openings: windows, doors, ducts/shafts, cellar entrances, escape hatches or ventilation openings.

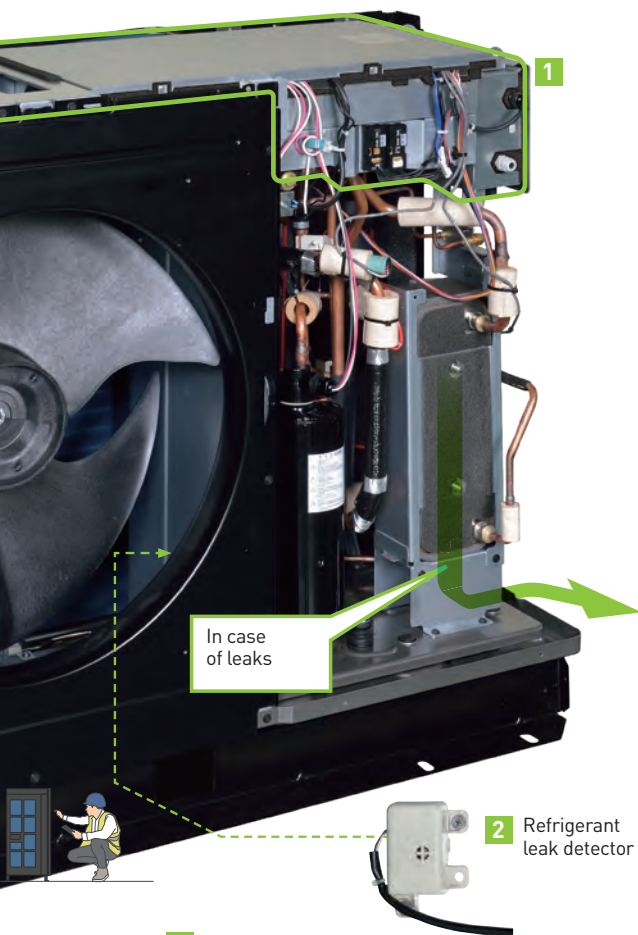


The clearance zones shown above apply exclusively to units FDCM 60 VNX-P and FDCM 71 VNX-P.

For all other models, consult the relevant manuals. Always refer to the specific technical documentation for each unit for further installation guidance.

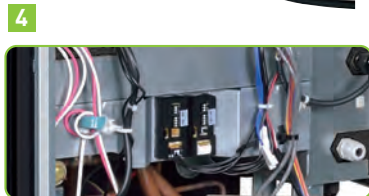
SAFETY SOLUTIONS

Hydrolution EZY is equipped with robust multi-level safety measures to prevent potential failures, even in the event of refrigerant leakage from the circuit. This ensures customer safety while making full use of the performance potential of A3 refrigerants.



FEATURES

- 1 Non-flammable top enclosure:** the PCB and terminal block are housed in a non-flammable enclosure.
- 2 Refrigerant leak detector:** in the event of a leak, the unit automatically shuts down and triggers an alarm on the indoor controller. The fan also activates to disperse the leaked refrigerant.
- 3 Leak check and lower vent hole:** a vent hole at the bottom ensures easy removal of any refrigerant leakage and allows easy verification of leaks through the hole.
- 4 External DIP switch:** there is no need to touch or access the refrigerant circuit and electrical box to change settings during installation or maintenance.
- 5 Gas separator with safety release valve:** prevents refrigerant from reaching the hydronic circuit.



Installation must be carried out only by certified personnel.

PROTECTIVE CLOTHING, EQUIPMENT AND TOOLS

Equipment	Fire and explosion prevention
Safety gloves	Approved extinguisher
Antistatic footwear	Prohibition of possible ignition sources within a 3 m radius of the machine during installation and maintenance
Antistatic clothing	ATEX explosimeter
Safety glasses or visor	ATEX leak detector
	Brushless screwdriver

EFFICIENCY AND HIGH CAPACITY

EZY R290 is the heat pump that offers the best performance on the market in terms of output and average efficiency in heating and cooling, with the **unique feature of producing 75°C hot water down to -25°C outdoor temperature.**

SEASONAL EFFICIENCY

4.75 SCOP

At 35°C (6 kW size)

5.00 SCOP

At 35°C (10 kW size)

3.61 SCOP

At 55°C (6 and 8 kW sizes)

3.71 SCOP

At 55°C (10 kW size)

OUTDOOR UNITS - LOW-TEMPERATURE HEATING

5.14 COP

In heating at 35°C
(A7/W35, 6 kW size)

4.49 COP

In heating at 35°C
(A7/W35, 8 kW size)

OUTDOOR UNITS - COOLING

7.5 kW

Cooling capacity
(A35/W18, 6 kW size)

9 kW

Cooling capacity
(A35/W18, 8 kW size)

EZY IDROSPLIT HYDROBOX CONFIGURATION

In Hydrobox mode, EZY Idrosplit can be used for heating and cooling only, or combined with one or more buffer tanks to also produce domestic hot water.

HYDROBOX COMBINATIONS

The Hydrobox combination provides space heating and cooling, with the option to add domestic hot water production.

EZY Idrosplit Hydrobox consists of an outdoor unit and a hydronic module (HBM) with integrated control unit. Inside the HBM: circulation pump, expansion vessel, flow meter, air vent valve and a pressure gauge + relief valve. By adding further accessories, the installation becomes even more complete and adapts to every heating and cooling requirement.

Hydrobox solution has the following advantages:

- **HEATING- AND COOLING-ONLY OPTION:** the flexibility of this solution makes it possible to meet the end user's needs without purchasing/ installing components that are not necessary for the purpose;
- **DHW OPTION**, available by connecting a DHW tank to the EZY Idrosplit Hydrobox;
- **FLEXIBLE INSTALLATION OF UNITS**, you can combine the components according to your needs;
- **CAPACITIES AVAILABLE**
 - 6 kW - R290
 - 8 kW - R290
 - 10 kW - R290
 - 14 kW - R290



**GWP
0,02**

R290

6, 8, 10, 14 kW
models

NEW



EZY IDROSPLIT HYDROBOX CONFIGURATION

In Hydrobox mode, EZY Idrosplit can be used for heating and cooling only, or combined with one or more buffer tanks to also produce domestic hot water.

HYDROBOX COMBINATIONS

The Hydrobox combination provides space heating and cooling, with the option to add domestic hot water production.

EZY Idrosplit Hydrobox consists of an outdoor unit and a hydronic module (HBM) with integrated control unit. Inside the HBM: circulation pump, expansion vessel, flow meter, air vent valve and a pressure gauge + relief valve. By adding further accessories, the installation becomes even more complete and adapts to every heating and cooling requirement.

Hydrobox solution has the following advantages:

- **HEATING- AND COOLING-ONLY OPTION:** the flexibility of this solution makes it possible to meet the end user's needs without purchasing/ installing components that are not necessary for the purpose;
- **DHW OPTION**, available by connecting a DHW tank to the EZY Idrosplit Hydrobox;
- **FLEXIBLE INSTALLATION OF UNITS**, you can combine the components according to your needs;
- **CAPACITIES AVAILABLE**
 - 10 kW - R32
 - 16 kW - R32



**GWP
675**

R32
10 and 16 kW
models

NEW



HYDROLUTION EZY SYSTEM - TECHNICAL DATA

EZY IDROSPLIT HYDROBOX R290

Outdoor unit model				FDCM 60VNX-P	FDCM 71VNX-P	FDCM 100VNX-P	FDCM 100VSX-P	FDCM 140VNX-P	FDCM 140VSX-P	
Heating	Rated power	A7//W35	kW	5.50 [0.95-8.00]	8.00 [1.00-10.00]	10.00 [1.40-15]*	10.00 [1.40-15]*	11.00 [1.40-18.00]*	11.00 [1.40-18.00]*	
	Power input			1.07	1.85	2.13*	2.13*	2.32*	2.32*	
	Performance coefficient			COP	5.14	4.49	4.70*	4.70*	4.75*	4.75*
	Rated power	A7//W45	kW	5.50 [0.92-8.00]	8.00 [0.97-10.00]	10.20 [1.30-14.70]*	10.20 [1.30-14.70]*	12.50 [1.30-17.90]*	12.50 [1.30-17.90]*	
	Power input			1.46	2.11	2.76*	2.76*	3.48*	3.48*	
	Performance coefficient			COP	3.77	3.79	3.70*	3.70*	3.60*	3.60*
Cooling	Rated power	A35//W18	kW	7.50 [1.93-8.00]	9.00 [1.93-10.00]	13.00 [3.30-14.80]*	13.00 [3.30-14.80]*	14.60 [3.40-15.80]*	14.60 [3.40-15.80]*	
	Power input			2.05	2.20	3.60*	3.60*	4.04*	4.04*	
	Energy efficiency			EER	3.66	4.09	3.61*	3.61*	3.62*	3.62*
	Rated power	A35//W7	kW	5.30 [1.32-6.30]	7.00 [1.32-7.50]	9.00 [2.20-12.00]*	9.00 [2.20-12.00]*	10.30 [2.30-12.60]*	10.30 [2.30-12.60]*	
	Power input			1.75	2.25	3.00*	3.00*	3.44*	3.44*	
	Energy efficiency			EER	3.03	3.11	3.00*	3.00*	3.00*	3.00*
Seasonal data (Heating)	Prated @ -10°C	35/55	kW	5/5	7/7					
	Seasonal performance coefficient			SCOP	4.75/3.61	4.61/3.61	5.00/3.71*	5.00/3.71*	4.68/3.60*	4.68/3.60*
	Seasonal energy efficiency (ns)			%	187/141	181/141	197/145.4*	197/145.4*	184.2/141*	184.2/141*
	Energy efficiency class			-	A+++/A++	A+++/A++	A+++/A++*	A+++/A++*	A+++/A++*	A+++/A++*
	Annual energy consumption			kWh/y	2135/2695	3055/3841				
Operating range	Outdoor air temperature	Heating & DHW	°C	-25-43						
		Cooling		15-45						
Refrigerant circuit data	Refrigerant Type (GWP)	R290 [0.02]								
	Q.ty of precharge (tons CO2)	kg (t)	0.65 [0]	0.85 [0]	1.3 [0]	1.3 [0]	1.6 [0]	1.6 [0]		
	Refrigerant control system	Electronic expansion valve								
	Compressor	Type	Twin rotary - DC Inverter							
Hydraulic data	Water/freon heat exchanger	Type	Braze-welded plates							
	Water connections	Size	inch	1" M (DN25)	1" M (DN25)	1" M (DN25)	1" M (DN25)	1" M (DN25)	1" M (DN25)	
	Operating pressure (system)	Max	bar	3	3	3	3	3	3	
Electrical data	Power supply	Ph-V-Hz	1ph-230V-50Hz				3ph-400V-50Hz		1ph-230V-50Hz	
	Maximum current	A	13.00	16.00	21.00	9.00	28.00	11.00		
	Power cable (recommended)	Type	3x4 mm ²	3x4 mm ²	3x6 mm ²	5x2.5 mm ²	3x6 mm ²	5x2.5 mm ²		
Product specifications	Fan	Type	q.ty	DC Inverter						
		Air flow	m ³ /h	2520	3000	3300	3300	3300	3300	
	Sound power level (max)		dB(A)	58	62	66	66	66	66	
	Sound pressure level (a 1 m)		dB(A)	41	49	50	50	51	51	
	Dimensions	LxDxH	mm	1160x440x916			1160x440x1120			
	Weight	Net	kg	82	90	122	127	132	137	
Indoor unit model				HBM140	HBM140	HBM140	HBM140	HBM140	HBM140	
Operating range	Delivery water temperature	Heating & DHW	°C	25-75 (85 with heater)						
		Cooling		5-25						
Hydraulic data	Pompa di circolazione	Included								
	Attacchi acqua per U.E.	Dimensions	inch	1" threaded						
	Expansion vessel	Volume	L	10						
Precharge		bar	0.5							
Electrical data	Power supply	Ph-V-Hz	1ph-230V-50Hz							
	Power input (Max)	A	2.00							
	Power cable (recommended)	Type	3x2.5 mm ²							
Product specifications	Sound power level		dB(A)	-						
	Dimensions	LxDxH	mm	440x380x800						
	Weight	Net	kg	31						
	Control (included)	On board machine								
	Remote control via Modbus (optional)	MODBUS40M								

The above data refers to the following standards: EN 14511:2018; EN 14825:2019; EN50564:2011; EN12102-1:2018; EN12102-2:2019; (EU)No:811:2013; (EU)No:813:2013; OJ 2014/C 207/02:2014.

* MHI also reserves the right, during commercialisation, to make minor changes to products in order to improve the product as a whole. As a result, the technical data indicated in the catalogue may be subject to change without notice.

HYDROLUTION EZY SYSTEM - TECHNICAL DATA

EZY IDROSPLIT HYDROBOX R32

Outdoor unit model				FDCM100VNX-W	FDCM140VNX-W	
Heating	Rated power	A7//W35	kW	10.00 [4.50-11.00]	14.00 [5.40-17.00]	
	Power input			2.33	3.11	
	Performance coefficient		COP	4.29	4.50	
	Rated power	A7//W45	kW	10.00 [6.40-11.00]	14.50 [7.60-16.50]	
	Power input			2.90	4.26	
	Performance coefficient		COP	3.45	3.40	
Cooling	Rated power	A35//W18	kW	11.00 [4.00-11.00]	16.50 [4.50-16.50]	
	Power input			2.97	4.34	
	Energy efficiency		EER	3.70	3.80	
	Rated power	A35//W7	kW	8.50 [3.70-9.50]	12.50 [4.20-12.50]	
	Power input			2.98	4.31	
	Energy efficiency		EER	2.85	2.90	
Seasonal data (Heating)	Prated @ -10°C	35/55	kW	8/8	12/12	
	Seasonal performance coefficient		SCOP	4.85/3.48	4.61/3.40	
	Seasonal energy efficiency (hs)		%	191/136	181/133	
	Energy efficiency class		-	A+++/A++	A+++/A++	
	Annual energy consumption		kWh/y	3815/5539	6175/8321	
Operating range	Outdoor air temperature	Heating & DHW	°C	-25-43		
		Cooling		15-43		
Refrigerant circuit data	Refrigerant Type (GWP)			R32 [675]		
	Q.ty of precharge (tons CO2)		kg (t)	2.0 (1.350)	2.9 (1.958)	
	Refrigerant control system			Electronic expansion valve		
	Compressor			Type Twin rotary - DC Inverter		
Hydraulic data	Water/freon heat exchanger			Type Braze-welded plates		
	Water connections	Size	inch	1" (DN25)	1" (DN25)	
	Operating pressure (system)	Max	bar	3	3	
Electrical data	Power supply			Ph-V-Hz 1ph-230V-50Hz		
	Maximum current			A	21.00	28.00
	Power cable (recommended)			Type	3x6 mm ²	3x6 mm ²
Product specifications	Fan	Type	q.ty	DC Inverter		
		Air flow	m ³ /h	3180	3600	
	Sound power level (max)			dB(A)	60	63
	Sound pressure level (a 1 m)			dB(A)	45	48
	Dimensions	LxDxH	mm	1160x440x1120		
Weight	Net	kg	104			
Indoor unit model				HBM140	HBM140	
Operating range	Delivery water temperature	Heating & DHW	°C	25-60 (65 with heater)		
		Cooling		7-25		
Hydraulic data	Pompa di circolazione			Included		
	Attacchi acqua per U.E.	Dimensions	inch	1" threaded		
	Expansion vessel	Volume	L	10		
		Precharge	bar	0.5		
Electrical data	Power supply			Ph-V-Hz 1ph-230V-50Hz		
	Power input (Max)			A	2	
	Power cable (recommended)			Type	3x2.5 mm ²	
Product specifications	Sound power level			dB(A)	-	
	Dimensions	LxDxH	mm	440x380x800		
	Weight	Net	kg	31		
	Control (included)			On board machine		
	Remote control via Modbus (optional)			MODBUS40M		

The above data refers to the following standards: EN 14511:2018; EN 14825:2019; EN50564:2011; EN12102-1:2018; EN12102-2:2019; (EU)No:811:2013; (EU)No:813:2013; OJ 2014/C 207/02:2014.

HEATING / COOLING / DOMESTIC HOT WATER

HYDROLUTION SYSTEM - ACCESSORIES

	Description	Code		Description	Code
	Electric resistance integration kit for EZY system.	ELK9M1		Ambient temperature sensor.	RTS40M
	6 kW All in One module (R32).	HMA 60-W		Remote control.	RMU40M
	8 kW All in One module (R32).	HMA 100-W		Energy measurement kit up to 85 litres/min.	EMK300M
	6, 8, 10 kW EZY Idrosplit module (R290 - R32).	HMM 100		Energy measurement kit up to 150 litres/min.	EMK500M
	6 to 16 kW Hydrobox EZY Idrosplit module (R290 - R32).	HBM140		3 kW electric resistance kit + control unit.	ME1030+HR10M
	Hydrobox for 6 kW O.U.	HMS 60-W		MODBUS remote control.	MODBUS40M
	Hydrobox for 8 kW O.U.	HMS 100-W		Integrated stainless steel storage tank and coil for the production of domestic hot water. Volume 300 litres. Dimensions (Ø x h) 650 x 1486 mm.	WT-AP-DW1-300 C-1
	Modular units' control (up to 8).	RC-HY40-W		Integrated stainless steel storage tank and coil for the production of domestic hot water. Volume 500 litres. Dimensions (Ø x h) 750 x 1786 mm.	WT-AP-DW1-500 C-1
	Circulation pump (up to 10 kW).	CPD11-25M-65		1.5 kW supplementary electric resistance for 300 and 500 liter tanks.	WT-EH-15-C
	Circulation pump (16 kW).	CPD11-25M-75		Titanium anode for 300 liter tank.	WT-AT-2-4-C
	DHW/heating diverter valve (6-8 kW)	VST05M		Titanium anode for 500 liter tank.	WT-AT-5-C
	DHW/heating diverter valve 10-16 kW).	VST11M		Hydraulic separator - 25 liter thermal flywheel.	WT-SI-PDC-25 C
	DHW/heating diverter valve for power >16 kW and up to 40 kW.	VST20M		Hydraulic separator - 51 liter thermal flywheel.	WT-SI-PDC-50 C
	Cooling Heating diverter valve (6-8 kW).	VCC05M		100 liter inertial tank.	WT-VT-PDC-100 C
	Cooling Heating diverter valve (10-16 kW).	VCC11M			
	Control kit for secondary heating systems up to 1200 l/h.	ECS40M			
	Control kit for secondary heating systems up to 1950 l/h.	ECS41M			
	Multifunction card.	AXC30M			

SAFETY KIT FOR INSTALLATION

The kit includes:

- Electronic leak detector.
- Personal detector.
- Sure Check spray leak detector.
- ATEX fan.
- Safety glasses.
- Antistatic gloves.
- Termal pouch.

