

OPTIONAL CONTROLS

CENTRALIZED CONTROLS

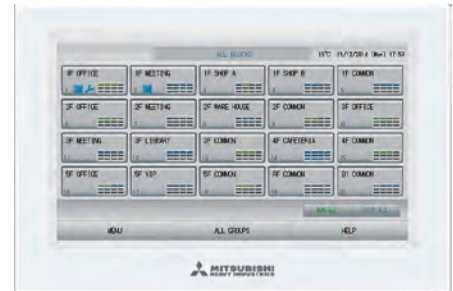
CENTRALIZED CONTROL PANEL SC-SL4-AE3/BE3

MHI introduces SC-SL4-AE3/BE3, the new centralized control with 9" interactive (Full Color Touch) LCD display.

Users can perform monitoring, programming and maintenance from the panel.

It can control up to 128 indoor units.

Users can connect with a PC or tablet through an Internet Explorer (IPad, Windows) WEB interface.



ALL THE FUNCTIONS OF THE NEW VERSION

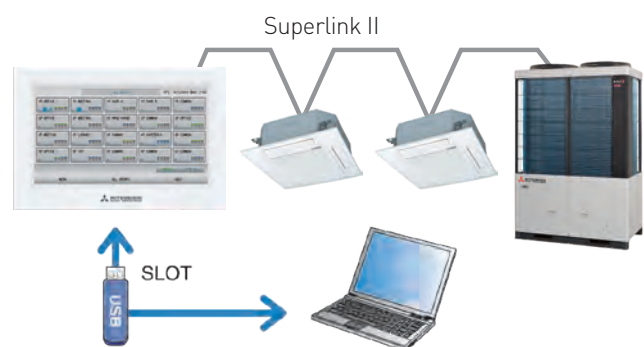
The indoor units can be programmed, monitored and interrogated individually, in groups, and in blocks of groups with the following functions:

Control	Monitoring	Scheduling	Management/Service
ON/OFF	Operating status	Annual scheduling	Definition of blocks
Modes cool/heat/fan/dry/Auto	Mode	Daily scheduling	Groups' definition
T° setting	Temperature settings	Special days' scheduling	Unit's definition
Permitted/prohibited operations	Ambient temperature	Seasonal scheduling	Date & Hour setting
Fan speed	Permitted/prohibited operations		Alarm history
Air direction	Fan speed		Consumption calculation period
Filter signal reset	Air direction		Cumulative operating time
Request control (3 steps)	Filter signal		Energy consumption
Emergency stop	Maintenance		
	Request control		

ELECTRICAL CONSUMPTION CALCULATION FUNCTION (SC-SL4-BE3 ONLY)

SC-SL4-BE3 is able to monitor electrical consumption in kW/h for each indoor unit in a single group on the Superlink system, using a USB memory.

	SC-SL4-BE3
Data export method	USB
Calculation software	Included
Number of inputs for pulse detector (wattmeter)	8
Connectable units (MAX)	128 (Superlink II)



Model	SC-SL4-AE3/SC-SL4-BE3	
Ambient temperature	°C	0° C ~ 40° C
Power supply		1-Phase 100-240V 50/60Hz
Consumption	W	18
Dimensions (H x L x P)	mm	172x250x23(+70)
Net weight	kg	2.00
Nb. of connectable I.U.	nb.	128 (Superlink II) / 144 (Supelink I)
LCD touch panel		LCD color, 9"
Superlink input		1 (Superlink II) / 3 (Superlink I)