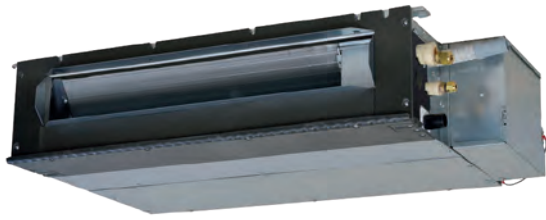


INDOOR UNITS

DUCTED LOW STATIC PRESSURE

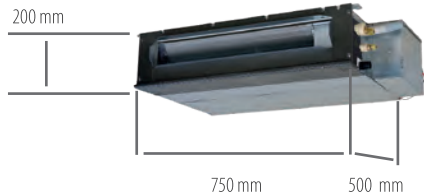


■ **7 capacities**
(1.50~7.10 kW)

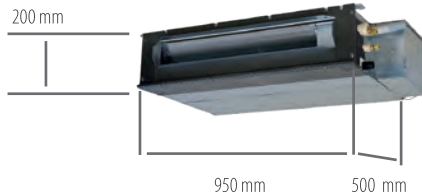
- Ideal for applications in hotels, hospitals and small offices
- Optional filter kit: UT-FL1EF (FDUT 15~36); UT-FL2EF (FDUT 45~56); UT-FL3EF (FDUT 71)
- Ducting flange: UT-SAT1EF (FDUT 15~36); UT-SAT2EF (FDUT 45~56); UT-SAT3EF (FDUT 71)
- "Human sensor": LB-KIT2

FDUT 15~71 KXE6F-E

COMPACT SIZE



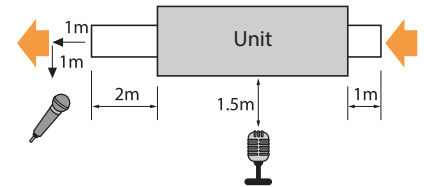
models FDUT 15, 22, 28, 36 KXE6F-E



models FDUT 45, 56 KXE6F-E

VERY QUIET OPERATION

Extremely quiet: only 22 dB(A) for models from 1.50~2.80 kW.



| Model | | FDUT 15 KXE6F-E | FDUT 22 KXE6F-E | FDUT 28 KXE6F-E | FDUT 36 KXE6F-E | FDUT 45 KXE6F-E | FDUT 56 KXE6F-E | FDUT 71 KXE6F-E |
|------------------------------------|------------------|--|----------------------|-----------------|--------------------------|----------------------------------|-----------------------|--|
| Rated capacity (Cooling) | kW | 1.50 | 2.20 | 2.80 | 3.60 | 4.50 | 5.60 | 7.10 |
| Rated capacity (Heating) | kW | 1.70 | 2.50 | 3.20 | 4.00 | 5.00 | 6.00 | 8.00 |
| Power supply | | 220-240V~ 50Hz | | | | | | |
| Power input (Cooling) | kW | 0.06 - 0.06 | 0.07 - 0.07 | 0.07 - 0.07 | 0.07 - 0.07 | 0.08 - 0.08 | 0.08 - 0.08 | 0.08 - 0.08 |
| Power input (Heating) | kW | 0.06 - 0.06 | 0.07 - 0.07 | 0.07 - 0.07 | 0.07 - 0.07 | 0.08 - 0.08 | 0.08 - 0.08 | 0.07 - 0.07 |
| Rated current (Cooling) | A | 0.27 - 0.27 | 0.28 - 0.25 | 0.28 - 0.25 | 0.32 - 0.29 | 0.36 - 0.33 | 0.38 - 0.35 | 0.42 - 0.42 |
| Rated current (Heating) | A | 0.27 - 0.27 | 0.29 - 0.25 | 0.29 - 0.25 | 0.33 - 0.28 | 0.34 - 0.32 | 0.35 - 0.33 | 0.46 - 0.46 |
| Sound pressure level | dB(A) | Hi 28 Me 26 Lo 22 | | | Hi 33 Me 30 Lo 26 | Hi 34 Me 32 Lo 28 | Hi 35 Me 33 Lo 30 | Hi 35 Me 31 Lo 28 |
| Sound power level | dB(A) | 52 | | | 57 | 58 | 59 | |
| External dimensions (HxLxD) | mm | 200x750x500 | | | 22 | 200x950x500 | | 220x1150x565 |
| Net weight | kg | 21 | | | | 25 | 31 | |
| Refrigerant circuit/Heat exchanger | | Finned and internally grooved pipes | | | | | | |
| Refrigerant control | | Electronic expansion valve | | | | | | |
| Air treatment/fan type & quantity | | Centrifugal fan x 2 | | | | Centrifugal fan x 3 | | Centrifugal fan x 4 |
| Motor | W | 14 | | | | 38 | 100 | |
| Starting method | | Direct in line | | | | | | |
| Air flow (standard) | m ³ h | Hi 360 Me 300 Lo 240 | Hi 450 Me 360 Lo 300 | | Hi 510 Me 420 Lo 330 | Hi 690 Me 540 Lo 420 | Hi 750 Me 540 Lo 432 | Hi 960 Me 780 Lo 570 |
| Static pressure | Pa | St. 10 Max 35 | | | | St. 10 Max 50 | | |
| Fresh air inlet | | Not possible | | | | | | |
| Air filter & quantity | | UT-FL1EF (Optional) | | | | UT-FL2EF (Optional) | | UT-FL3EF (Optional) |
| Shock & vibration absorption | | Rubber vibration absorber (for fan motor) | | | | | | |
| Thermal & acoustic insulation | | Polyurethane foam | | | | | | |
| Control devices | | Wired control RC-E5 Optional; RCH-E3 Optional; RCN-KIT4-E2 Optional; RC-EX3 Optional | | | | | | |
| Ambient temperature control | | Electronically-controlled thermostat | | | | | | |
| Safety devices | | Overvoltage protection for the fan motor; Anti-frost protection thermostat | | | | | | |
| Refrigerant pipings' diameter | mm (in) | Gas side ø9.52 (3/8") | | | Liquid side ø6.35 (1/4") | | Gas side ø12.7 (1/2") | Liquid side ø9.52 (3/8") Gas side ø15.88 (5/8") |
| Joining method | | flare | | | | | | |
| Refrigerant | | R410A | | | | | | |
| Drain pump | | Built-in | | | | | | |
| Condensate drain | | Can be connected with VP25 | | | | | | |
| Piping insulation | | Necessary (on both sides. Liquid & Gas) | | | | | | |
| Accessories | | Assembly kit, UT-SAT1EF (Flange) | | | | Assembly kit, UT-SAT2EF (Flange) | | Assembly kit, UT-SAT3EF (Flange) |