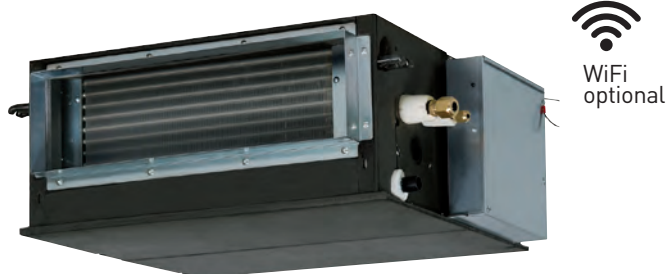


## INDOOR UNITS

## COMPACT DUCTED



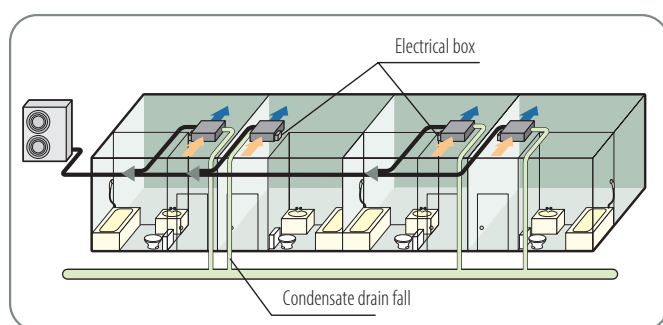
FDUH 22~36 KXE6F

### ■ 3 capacities

(2,20~3,60 kW)

- Maximum compactness: only 25.7 cm in height
- Maximum installation flexibility
- Rear air intake from back
- Extremely quiet: only 27 dB(A)
- UH-DU-E condensate drain kit (optional)

## THE ELECTRICAL BOX



The electrical box and the condensate drain pump can be installed on both sides of the unit, while the incoming air penetrates through the bottom or the back.

The lowest noise impact on the market makes the unit suitable for installation in rooms designed to ensure comfort and relaxation. Compact and lightweight, FDUH is ideal for installation in hotels, hospitals and small offices.

Furthermore, the application of the RCH-E3 remote control (optional) enables the user to take advantage of a simplified device to prepare and make the environment to be air conditions as comfortable as possible.

Model		FDUH 22 KXE6F	FDUH 28 KXE6F	FDUH 36 KXE6F
Rated capacity (Cooling)	kW	2.20	2.80	3.60
Rated capacity (Heating)	kW	2.50	3.20	4.00
Power supply		220-240V~50Hz		
Power input (Cooling)	kW	0.05 - 0.07	0.05 - 0.07	0.05 - 0.07
Power input (Heating)	kW	0.05 - 0.07	0.05 - 0.07	0.05 - 0.07
Rated current (Cooling)	A	0.25 - 0.32	0.25 - 0.32	0.25 - 0.32
Rated current (Heating)	A	0.25 - 0.32	0.25 - 0.32	0.25 - 0.32
Sound pressure level	dB(A)	Hi 33 Me 30 Lo 27		
Sound power level	dB(A)	60		
External dimensions (HxLxD)	mm	Unit 257x570x530		
Net weight	kg	22		
Refrigerant circuit/Heat exchanger		Finned and internally grooved pipes		
Refrigerant control		Electronic expansion valve		
Air treatment/fan type & quantity		Centrifugal fan x 1		
Motor	W	30		
Starting method		Direct. in line		
Air flow (standard)	m <sup>3</sup> /h	Hi 420 Me 390 Lo 360		
Static pressure	Pa	30		
Fresh air inlet		Not possible		
Air filter & quantity		Optional		
Shock & vibration absorption		Rubber vibration absorber (for fan motor)		
Thermal & acoustic insulation		Polyurethane foam		
Control devices		Wired control RC-E5 Optional; RCH-E3 Optional; RCN-KIT4-E2 Optional; RC-EX3 Optional		
Ambient temperature control		Electronically-controlled thermostat		
Safety devices		Overvoltage protection for the fan motor Anti-frost protection thermostat		
Refrigerant pipings' diameter	mm (in)	Gas side Ø9.52 (3/8")		Gas side: Ø12.7 (1/2")
Joining method		flare		
Refrigerant		R410A		
Condensate drain		Can be connected with VP20		
Piping insulation		Necessary (on both sides. Liquid & Gas)		
Accessories		UH-FL1E (Filter); UH-DU-E (Condensate drain pump)		