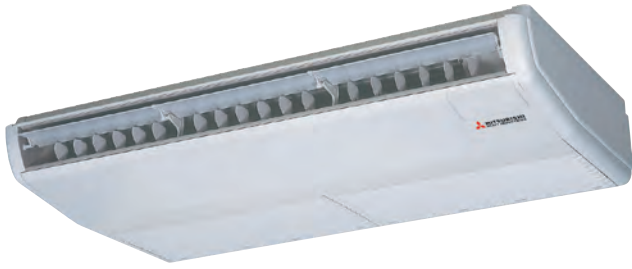


INDOOR UNITS

CEILING



■ **6 capacities**

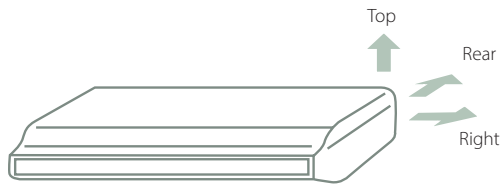
(3.60~14.0 kW)

- Ideal for very large environments, thanks to the particularly wide air flow
- Maximum compactness: only 21 cm high (3.60 to 7.10 kW models)
- Quick and easy installation, thanks to a net weight of only 28 kg (3.60 to 5.60 kW models)
- Reception kit for RCN-E-E2 infrared remote control (optional)
- "Human sensor": LB-E

FDE 36-140 KXZE1

FLEXIBLE PIPE ORIENTATION

Maximum flexibility: the refrigerant piping can be attached in 3 different positions (rear, top, right), as can that of the condensate drain (left, right).



Model		FDE 36 KXZE1	FDE 45 KXZE1	FDE 56 KXZE1	FDE 71 KXZE1	FDE 112 KXZE1	FDE 140 KXZE1	
Rated capacity (Cooling)	kW	3.60	4.50	5.60	7.00	11.20	14.00	
Rated capacity (Heating)	kW	4.00	5.00	6.30	8.00	12.50	16.00	
Power supply		220-240V~50Hz						
Power input (Cooling)	kW	0.05 - 0.06	0.05 - 0.06	0.05 - 0.06	0.10 - 0.11	0.14 - 0.16	0.16 - 0.18	
Power input (Heating)	kW	0.05 - 0.06	0.05 - 0.06	0.05 - 0.06	0.09 - 0.10	0.13 - 0.15	0.15 - 0.17	
Rated current (Cooling)	A	0.25 - 0.26	0.25 - 0.26	0.25 - 0.26	0.46 - 0.48	0.65 - 0.67	0.77 - 0.78	
Rated current (Heating)	A	0.23 - 0.25	0.23 - 0.25	0.23 - 0.25	0.42 - 0.44	0.59 - 0.63	0.70 - 0.72	
Sound pressure level	dB(A)	Hi 39 Me 38 Lo 36			Hi 41 Me 39 Lo 37	Hi 44 Me 41 Lo 39	Hi 46 Me 44 Lo 43	
Sound power level	dB(A)	60						
External dimensions (HxLxD)	mm	210x1070x690			210x1320x690	250x1620x690		
External appearance		Chalk white						
Munsell color		(6.8Y8.9 / 0.2) similar						
Net weight	kg	28			37	49		
Refrigerant circuit/Heat exchanger		Finned and internally grooved pipes						
Refrigerant control		Electronic expansion valve						
Air treatment/fan type & quantity		Centrifugal fan x 2			Centrifugal fan x 4			
Motor	W	25			20 x 2	30 x 2	40 x 2	
Starting method		Direct. in line						
Air flow (standard)	m³/h	Hi 600 Me 540 Lo 420			Hi 960 Me 840 Lo 720	Hi 1560 Me 1380 Lo 1260	Hi 1740 Me 1560 Lo 1380	
Static pressure	Pa	0						
Fresh air inlet		Not possible						
Air filter & quantity		Plastic mesh filter x 2 (washable)						
Shock & vibration absorption		Rubber vibration absorber (for fan motor)						
Thermal & acoustic insulation		Polyurethane foam						
Control devices		Wired control RC-E5 Optional; RCH-E3 Optional; RCN-E-E2 Optional; RC-EX3 Optional						
Ambient temperature control		Electronically-controlled thermostat						
Safety devices		Overvoltage protection for the fan motor						
		Anti-frost protection thermostat						
Refrigerant pipings' diameter	mm (in)	Liquid side Ø6.35 (1/4") Gas side Ø12.7 (1/2")			Liquid side Ø9.52 (3/8") Gas side Ø15.88 (5/8")			
Joining method		flare						
Refrigerant		R410A						
Condensate drain		Can be connected with VP20						
Piping insulation		Necessary (on both sides. Liquid & Gas)						
Accessories		Assembly kit						