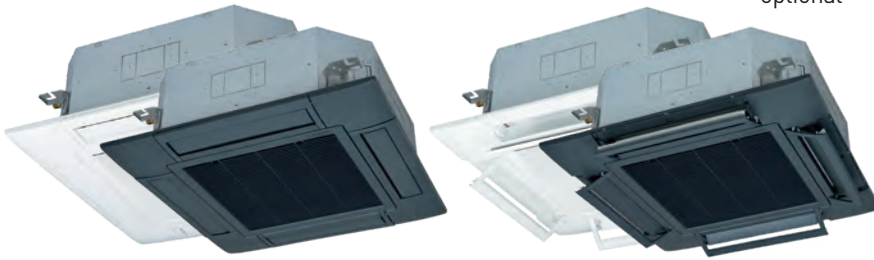


INDOOR UNITS

CASSETTE 84x84



- **9 capacities**
(2.80~16.00 kW)
- Ideal for residential and commercial applications: the cassette becomes invisible because it is completely built into the false ceiling
- Removable caps on the 4 corners for easy installation
- Easy condensate drain pan control
- Anti-draft panel: flexible flap control for FDT (optional)
- Corner with "Human Sensor":
 - LB-T-5BW-E white
 - LB-T-5BB-E black
- Condensate drain pump as standard: raises condensation up to 850 mm from the flush panel

FDT 28~160 KXZE1

FDT 28~160 KXZE1

- Standard T-PSA-5BW-E panel
 - Antidraft T-PSAE-5BW-E panel
- Standard T-PSA-5BB-E panel
 - Antidraft T-PSAE-5BB-E panel

ANTIDRAFT PANEL

Maximum comfort without direct drafts: new flap control for greater flexibility.

Model		FDT 28 KXZE1	FDT 36 KXZE1	FDT 45 KXZE1	FDT 56 KXZE1	FDT 71 KXZE1	FDT 90 KXZE1	FDT 112 KXZE1	FDT 140 KXZE1	FDT 160 KXZE1	
Standard white / black panel		T-PSA-5BW-E / T-PSA-5BB-E									
Antidraft white / black panel		T-PSAE-5BW-E / T-PSAE-5BB-E									
Rated capacity (Cooling)	kW	2.80	3.60	4.50	5.60	7.10	9.00	11.20	14.00	16.00	
Rated capacity (Heating)	kW	3.20	4.00	5.00	6.30	8.00	10.00	12.50	16.00	18.00	
Power supply		220-240V~ 50Hz									
Power input (Cooling)	kW	0.02 - 0.02	0.03 - 0.03	0.03 - 0.03	0.04 - 0.04	0.08 - 0.08	0.13 - 0.13	0.14 - 0.14	0.14 - 0.14	0.14 - 0.14	
Power input (Heating)	kW	0.02 - 0.02	0.03 - 0.03	0.03 - 0.03	0.04 - 0.04	0.08 - 0.08	0.13 - 0.13	0.14 - 0.14	0.14 - 0.14	0.14 - 0.14	
Rated current (Cooling)	A	0.20 - 0.19	0.30 - 0.28	0.30 - 0.28	0.36 - 0.33	0.70 - 0.64	1.04 - 0.95	1.12 - 1.02	1.12 - 1.02	1.12 - 1.02	
Rated current (Heating)	A	0.20 - 0.19	0.30 - 0.28	0.30 - 0.28	0.36 - 0.33	0.70 - 0.64	1.04 - 0.95	1.12 - 1.02	1.12 - 1.02	1.12 - 1.02	
Sound pressure level	dB(A)	P-Hi 33 Hi 31 Me 29 Lo 27	P-Hi 34 Hi 31 Me 29 Lo 27	P-Hi 35 Hi 33 Me 31 Lo 27	P-Hi 38 Hi 33 Me 31 Lo 27	P-Hi 47 Hi 35 Me 32 Lo 28	P-Hi 49 Hi 38 Me 36 Lo 31	P-Hi 49 Hi 39 Me 37 Lo 31	P-Hi 49 Hi 42 Me 39 Lo 32	P-Hi 49 Hi 42 Me 39 Lo 33	
Sound power level	dB(A)	49	49	50	55	62	65	66	66	66	
External dimensions (HxLxD)		Unit 236x840x840					Unit 298x840x840				
External appearance		Panel 35 x 950 x 950									
Munsell color		Snow white (RAL 9003). Shadow black (RAL 7022)									
Net weight		Unit 20 Panel 5			Unit 21.5 Panel 5			Unit 25 Panel 5			
Refrigerant circuit/Heat exchanger		Finned and internally grooved pipes									
Refrigerant control		Electronic expansion valve									
Air treatment/fan type & quantity		Turbo fan x 1									
Motor	W	58	58	58	58	58	120	120	120	120	
Starting method		Direct, in line									
Air flow (standard)	m ³ /h	PHi 900 Hi 840 Me 720 Lo 600	PHi 960 Hi 840 Me 720 Lo 600	PHi 1020 Hi 900 Me 780 Lo 600	PHi 1200 Hi 960 Me 780 Lo 660	PHi 1680 Hi 1020 Me 840 Lo 720	PHi 2220 Hi 1500 Me 1320 Lo 900	PHi 2280 Hi 1560 Me 1380 Lo 1020	PHi 2280 Hi 1680 Me 1500 Lo 1080	PHi 2280 Hi 1740 Me 1560 Lo 1140	
Static pressure	Pa	0									
Fresh air inlet		Possible									
Air filter & quantity		Plastic mesh filter x 1 (washable)									
Shock & vibration absorption		Rubber vibration absorber (for fan motor)									
Thermal & acoustic insulation		Polyurethane foam									
Optional control devices		Wired control RC-E5; Wired control RCH-E3; Wired control RC-EX3A; Remote control Kit RCN-T-5BW-E2 (white); Remote control Kit RCN-T-5BB-E2 (black)									
Ambient temperature control		Electronically-controlled thermostat									
Safety devices		Overvoltage protection for the fan motor Anti-frost protection thermostat									
Refrigerant pipings' diameter		Liquid side: Ø6.35 (1/4") Gas side: Ø9.52 (3/8")					Liquid side: Ø9.52 (3/8") Gas side: Ø15.88 (5/8")				
Joining method		flare									
Refrigerant		R410A									
Drain pump		Built-in									
Condensate drain		Can be connected with VP25									
Piping insulation		Necessary (on both sides. Liquid & Gas)									
Accessories included		Assembly kit. Condensate pipe									
Wi-Fi module (optional)		INWFIMHI001R100									