

Line up

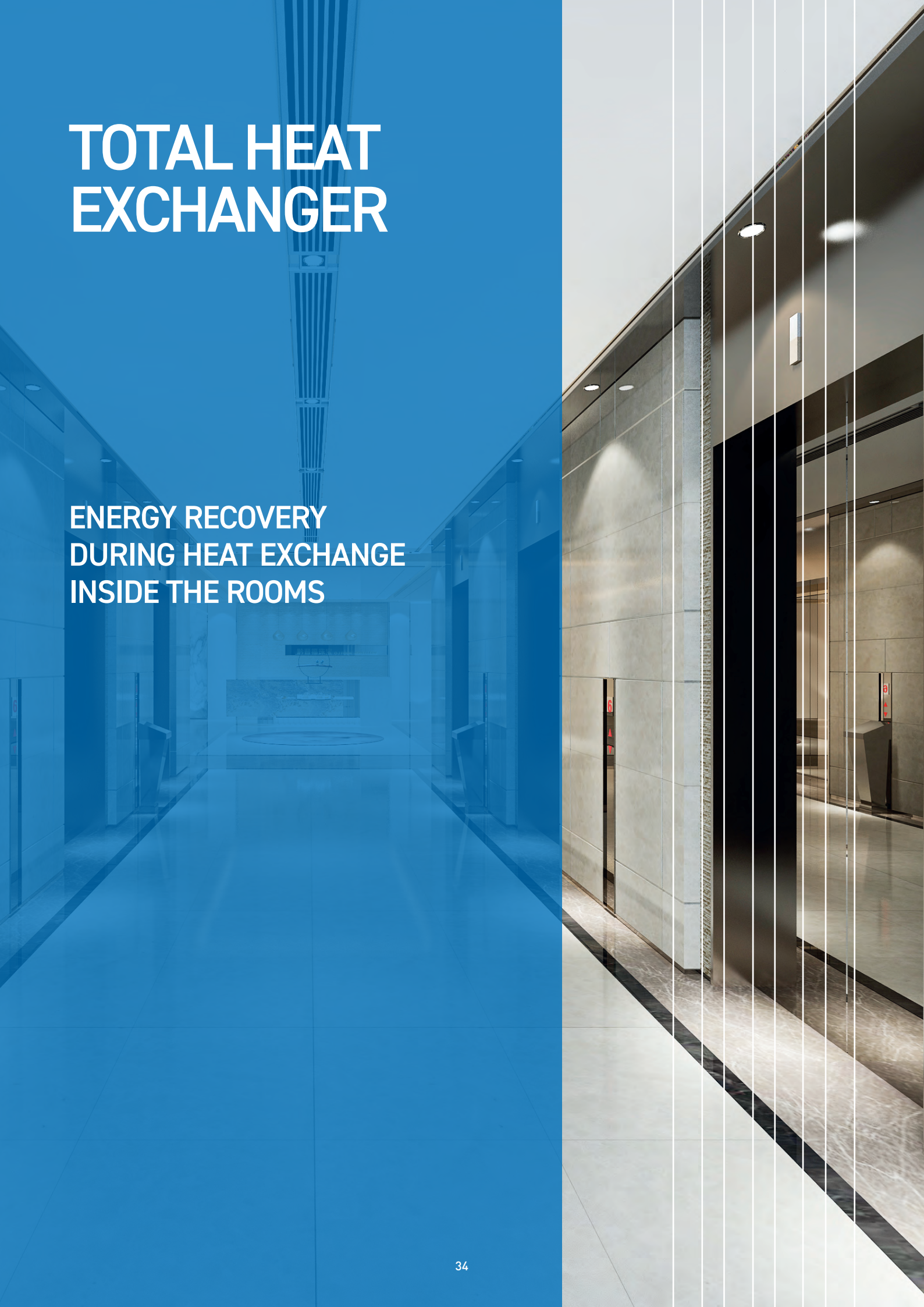
TOTAL HEAT EXCHANGER

Indoor units	Range
 ETIN 805	✓ 800 mc/h
 ETIN 1005	✓ 1000 mc/h
 ETIN 1505	✓ 1500 mc/h
 ETIN 2005	✓ 2000 mc/h

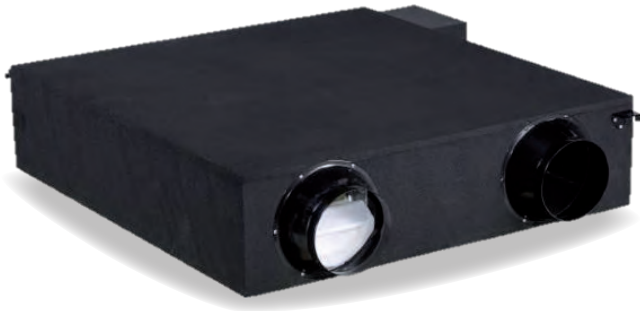


TOTAL HEAT EXCHANGER

ENERGY RECOVERY
DURING HEAT EXCHANGE
INSIDE THE ROOMS



TOTAL HEAT EXCHANGER



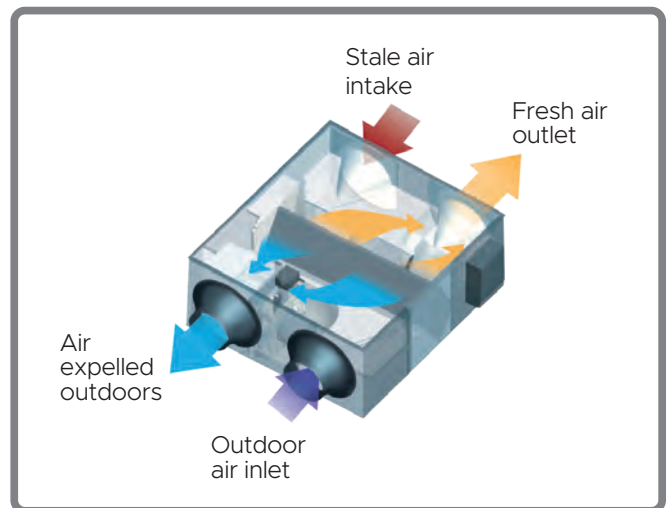
ETIN 805~2005

- 4 capacities: 800~2000 m³/h
- DC Inverter fan.
- Mandatory wire controller

Ventilation units with heat recovery are suited for use in bars, restaurants, offices, gyms, changing rooms where air needs to be exchanged during hours of operation.

The unit consists of two centrifugal fans: one introduces clean air filtered from outside and the other one expels the stale air from the inside. The two air flows go through a blade heat exchanger, in which part of the heat is recovered.

Depending on the season, the indoor air heats or cools the outdoor air, which is introduced without coming into contact with it.



Model			ETIN 805	ETIN 1005	ETIN 1505	ETIN 2005
Exchange efficiency ¹	Enthalpy	%	72.3	76.0	69.4	74.7
	Thermal	%	78.7	82.8	75.5	77.2
Electrical data						
Power supply	Ph-V-Hz	1-220~240-50				
Power absorption	W	320	380	680	950	
Rated absorbed current	A	2.40	2.90	3.80	5.70	
Product specifications						
External dimensions	DxLxH	mm	1311x1286x390	1311x1526x390	1740x1425x615	1811x1625x685
Net weight		Kg	80	90	181.5	208.5
Sound power level	Hi	dB(A)	55	54	69	70
Treated air volume		m ³ /h	800	1000	1500	2000
Fan static pressure	Hi	Pa	140	160	180	200
Ducting flange		mm	ø244	ø244	346x326	346x326
Condensate drain pipe			Not required		Necessary	
Operating range (max UR 80%)		°C	-7~43			
Degree of protection			IPX2			
Accessories						
Wired control (not included)			DTW EH5			

Reference legislation: EU Ecodesign Directive 1253/2014 for non-residential ventilation units (NRVU) and residential ventilation (RVU).
 1. Values related to the high speed of the 3 levels settable by wired remote control.