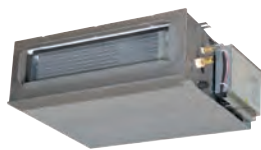


INDOOR UNITS

DUCTED MEDIUM STATIC PRESSURE



FDUM 50 VH



OPTIONAL

Compatible with **AIRZONE** systems

Model			FDUM 50 VH
Type			Ducted type indoor unit
Rated capacity	Cooling	kW	5.00
	Heating	kW	5.80
Electrical data			
Power supply	Outdoor unit	Ph-V-Hz	1-220~240V-50Hz
Wiring cables I.U./O.U.		nb.	4
Refrigerant circuit data			
Diameter of refrigerant pipings liquid/gas		mm (inch.)	6.35(1/4") - 12.74(1/2")
Product specifications			
Dimensions	LxDxH	mm	750x635x280
Net weight		Kg	29
Sound power level	Max	dB(A)	60
Sound pressure level	P-Hi/Hi/Me/Lo	dB(A)	37/32/29/26
Air flow volume	P-Hi/Hi/Me/Lo	m ³ /h	780/600/540/480
Fan static pressure	Std/Max	Pa	35/100
Accessories			
Wired control			RC-E5 / RC-EX3A / RC-EXZ3A / RCH-E3
IR remote control (KIT)			RCN-KIT4-E2
Optional parts			
Wi-Fi module			INWFIMHI001R100
Human sensor (KIT)			LB-KIT2
SUPERLINK interface II			SC-ADNA-E
Recovery filter (KIT)			UM-FL1EF

CEILING



FDE 50 VH



OPTIONAL

Model			FDE 50 VH
Type			Ceiling type indoor unit
Rated capacity	Cooling	kW	5.00
	Heating	kW	5.80
Electrical data			
Power supply	Outdoor unit	Ph-V-Hz	1-220~240V-50Hz
Wiring cables I.U./O.U.		nb.	4
Refrigerant circuit data			
Diameter of refrigerant pipings liquid/gas		mm (inch.)	6,35(1/4") - 12,74(1/2")
Product specifications			
Dimensions	LxDxH	mm	1070x690x210
Net weight		Kg	28
Sound power level	Max	dB(A)	60
Sound pressure level	P-Hi/Hi/Me/Lo	dB(A)	46/38/36/31
Air flow volume	P-Hi/Hi/Me/Lo	m ³ /h	780/600/540/420
Accessories			
Wired control			RC-E5 / RC-EX3A / RCH-E3
IR remote control (KIT)			RCN-E-E3
Optional parts			
Wi-Fi module			INWFIMHI001R100
Human sensor (KIT)			LB-E
SUPERLINK interface II			SC-ADNA-E