

Optional controls

CENTRALISED CONTROLS

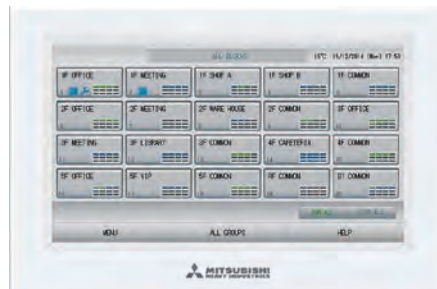
SC-SL4-AE3/BE3 CENTRALISED CONTROL PANEL

MHI introduces its SC-SL4-AE3/BE3, centralised control with 9" interactive (Full Color Touch) LCD display.

Users can perform monitoring, programming and maintenance from the panel.

It can control up to 128 indoor units.

Users can connect with a PC or tablet through an Internet Explorer (IPad, Windows) WEB interface.



TUTTE LE FUNZIONI DELLA NUOVA VERSIONE

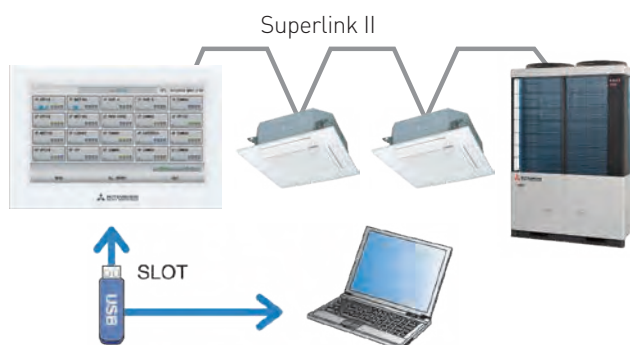
Le unità interne possono essere programmate, monitorate e interrogate individualmente, a gruppi, e a blocchi di gruppi con le seguenti funzioni:

Control	Monitoring	Programming	Administration/Service
On/Off	Operating status	Yearly programming	Block definitions
Cool/heat/fan/dry/Auto modes	Mode	Daily programming	Group definitions
T° setting	Temperature setting.	Special daily programming	Unit definition
Operations allowed/prohibited	Room temperature	Seasonal programming	Date and Time setting
Fan speed	Operations allowed/prohibited		Alarm history
Air direction	Fan speed		Consumption calculation period
Filter signal reset	Air direction		Cumulative operating time
Request control (3 steps)	Filter signal		Energy consumption
Emergency stop	Maintenance		
	Request control		

ELECTRICAL CONSUMPTION CALCULATION FUNCTION (SC-SL4-BE3 ONLY)

SC-SL4-BE3 is able to monitor electrical consumption in kW/h for each indoor unit in a single group on the Superlink system, using a USB memory.

	SC-SL4-BE3
Data export method	USB
Calculation software	Included
Number of inputs for pulse detector (wattmeter)	8
Connectable units (MAX)	128 (Superlink II)



Model	SC-SL4-AE3/SC-SL4-BE3	
Room temperature	°C	0° C ~ 40° C
Power		1 Phase 100-240V 50/60Hz
Consumption	W	18
Dimensions (H x L x D)	mm	172x250x23(+70)
Net weight	kg	2.00
Number of connectable I.U.	no.	128 (Superlink II) / 144 (Supelink I)
LCD touch panel		LCD colour. 9"
SL (Superlink) signal input		1 (Superlink II) / 3 (Superlink I)