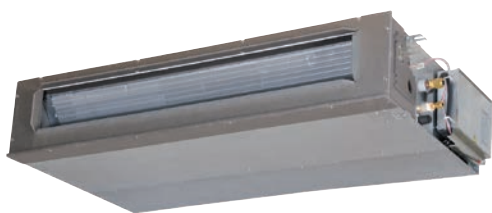


MONOSPLIT SUPER

Ducted with medium adjustable head



FDUM 100-125-140 VH

- **max 100**
Fan pressure head
- Unit with bottom or rear air intake
- **280 mm**
Height
- **50 m**
Split length
- ESP function: automatic maintenance of the air flow rate as flow resistance varies
- Filter not included
- Compatible with **AIRZONE** systems

Indoor unit model			FDUM 100 VH	FDUM 100 VH	FDUM 125 VH	FDUM 125 VH	FDUM 140 VH	FDUM 140 VH
Outdoor unit model			FDU 100 VNA-W	FDC 100 VSA-W	FDC 125 VNA-W	FDC 125 VSA-W	FDC 140 VNA-W	FDC 140 VSA-W
Type			DC-Inverter heat pump					
Nominal data								
Rated capacity (T=+35°C)	Cooling	kW	10.00 (4.00~11.20)		12.50 (5.00~14.00)		13.60 (5.00~14.50)	
Rated absorbed power (T=+35°C)		kW	2.99		4.36		5.13	
Rated energy efficiency coefficient		EER ¹	3.35		2.87		2.65	
Rated capacity (T=+7°C)	Heating	kW	11.20 (4.00~12.50)		14.00 (4.00~16.00)		15.50 (4.00~16.50)	
Rated absorbed power (T=+7°C)		kW	2.66		3.69		4.21	
Rated energy performance coefficient		COP ¹	4.21		3.79		3.68	
Seasonal data								
Theoretical load (Pdesignc)	Cooling	kW	10.00		12.50		13.60	
Seasonal energy efficiency index		SEER ²	6.11		5.57		5.30	
Seasonal energy efficiency class		626/2011 ³	A++		-		-	
Annual energy consumption		kWh/a	574		-		-	
Theoretical load (Pdesignh) @-10°C	Heating (average climate conditions)	kW	8.50		14.00		15.50	
Seasonal energy efficiency index		SCOP ²	4.19		4.13		4.01	
Seasonal energy efficiency class		626/2011 ³	A+		-		-	
Annual energy consumption		kWh/a	2843		-		-	
Electrical data								
Power supply	Outdoor unit	Ph-V-Hz	1-220~240V-50Hz	3-380~415V-50Hz	1-220~240V-50Hz	3-380~415V-50Hz	1-220~240V-50Hz	3-380~415V-50Hz
Power cable		Type	3 x 6 mm ²	5 x 4 mm ²	3 x 6 mm ²	5 x 4 mm ²	3 x 6 mm ²	5 x 4 mm ²
Connection wires between I.U. and O.U.		no.	4	4	4	4	4	4
Absorbed current	Cooling	A	14.30	4.60	20.40	6.80	23.70	8.10
	Heating	A	12.70	4.10	17.80	5.90	20.30	6.80
Maximum current		A	26.00	17.00	26.00	17.00	27.00	18.00
Maximum absorbed power		kW	6.40	10.20	6.40	10.20	6.40	10.20
Refrigerant circuit								
Refrigerant ⁴		Type (GWP)	R32 (675)					
Quantity refrigerant pre-load		Kg	3.3		3.3		3.3	
Tons of CO ₂ equivalent		t	2.228		2.228		2.228	
Diameter of refrigerant piping on liquid/gas		mm (inches)	ø9.52 (3/8") - ø15.88(5/8")		ø9.52 (3/8") - ø15.88(5/8")		ø9.52 (3/8") - ø15.88(5/8")	
Max splitting length		m	50		50		50	
Max height difference I.U./O.U.	O.U. above/O.U. under	m	50/15		50/15		50/15	
Split length without additional charge		m	30		30		30	
Additional load		g/m	54		54		54	
Indoor unit specifications								
Dimensions	LxDxH	mm	1370x740x280		1370x740x280		1370x740x280	
Net weight		Kg	54		54		54	
Sound power level	Max	dB(A)	65		67		70	
Sound pressure level	P-Hi/Hi/Me/Lo	dB(A)	44/38/36/30		45/40/34/29		47/40/35/30	
Treated air volume	P-Hi/Hi/Me/Lo	m ³ /h	2160/1680/1500/1140		2340/1920/1560/1200		2880/2100/1680/1320	
Fan pressure head	Std/Max	Pa	60/100		60/100		60/100	
Outdoor unit specifications								
Dimensions	LxDxH	mm	970x370x845		970x370x845		970x370x845	
Net weight		Kg	77	78	77	78	77	78
Sound power level	Max	dB(A)	70		71		73	
Sound pressure level	Max	dB(A)	55		56		58	
Treated air volume	Max	m ³ /h	4500		4500		4500	
Operating limits (outside temperature)	Cooling	°C	-15~+50					
	Heating	°C	-20~+20					
Accessories								
Wired remote control			RC-E5 (LCD) / RC-EX3A (touch) / RC-EX23A (touch + zone control) / RCH-E3 (simplified)					
IR remote control (KIT)			RCN-KIT4-E2					
Optional parts								
Wi-Fi module			INWFIMH1001R000					
Human sensor (KIT)			LB-KIT2					
SUPERLINK II interface			SC-ADNA-E					
Recovery filter (KIT)			UM-FL3EF					

1. Value measured according to the harmonised standard EN 14511. 2. EU Regulation No. 206/2012 -- Value measured according to the harmonised standard EN 14825. 3. Delegated Regulation (EU) No 626/2011 regarding the new energy labelling of air conditioners. 4. Refrigerant leakage contributes to climate change. When released into the atmosphere, refrigerants with a lower global warming potential (GWP) contribute less to global warming than those with a higher GWP. This appliance contains a refrigerant with a GWP of 675. If 1 kg of this refrigerant fluid were released into the atmosphere, therefore, the impact on global warming would be 675 times higher than 1 kg of CO₂, over a period of 100 years. Under no circumstances should the user try to intervene on the refrigerant circuit or disassemble the product. Always contact qualified personnel if necessary.