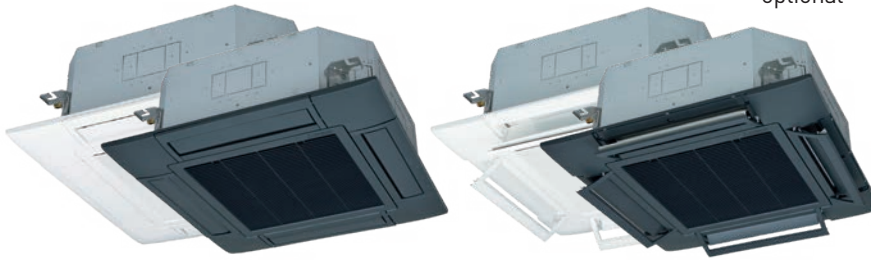


Indoor units

CASSETTE 84x84



■ 9 power sizes

(2.80~16.00 kW)

- Ideal for commercial applications: the cassette becomes invisible because it is completely built into the false ceiling
- Removable caps on the 4 corners for easy installation
- Easy condensate drain pan control
- Anti-draft panel: flexible flap control for FDT (optional)
- Corner with "Human Sensor":
 - LB-T-5BW-E white
 - LB-T-5BB-E black
- Condensate drain pump as standard: raises condensation up to 850 mm from the flush panel

FDT 28~160 KXZE1

- Standard T-PSA-5BW-E panel
- Standard T-PSA-5BB-E panel

FDT 28~160 KXZE1

- Anti-draft T-PSAE-5BW-E panel
- Anti-draft T-PSAE-5BB-E panel

ANTI-DRAFT PANEL

Maximum comfort without direct drafts: new flap control for greater flexibility.

Model		FDT 28KXZE1	FDT 36KXZE1	FDT 45KXZE1	FDT 56KXZE1	FDT 71KXZE1	FDT 90KXZE1	FDT 112KXZE1	FDT 140KXZE1	FDT 160KXZE1	
Standard black/white panel		T-PSA-5BW-E/T-PSA-5BB-E									
Standard anti-draft black/white panel		T-PSAE-5BW-E/T-PSAE-5BB-E									
Nominal Cool. capacity	kw	2.80	3.60	4.50	5.60	7.10	9.00	11.20	14.00	16.00	
Nominal Heat. capacity	kw	3.20	4.00	5.00	6.30	8.00	10.00	12.50	16.00	18.00	
Power		220~240V~50Hz									
Cool. power consumption	kw	0.02 - 0.02	0.03 - 0.03	0.03 - 0.03	0.04 - 0.04	0.08 - 0.08	0.13 - 0.13	0.14 - 0.14	0.14 - 0.14	0.14 - 0.14	
Heat. power consumption	kw	0.02 - 0.02	0.03 - 0.03	0.03 - 0.03	0.04 - 0.04	0.08 - 0.08	0.13 - 0.13	0.14 - 0.14	0.14 - 0.14	0.14 - 0.14	
Rated current in Cool.	A	0.2 - 0.19	0.3 - 0.28	0.3 - 0.28	0.36 - 0.33	0.70 - 0.64	1.04 - 0.95	1.12 - 1.02	1.12 - 1.02	1.12 - 1.02	
Rated current in Heat.	A	0.2 - 0.19	0.3 - 0.28	0.3 - 0.28	0.36 - 0.33	0.70 - 0.64	1.04 - 0.95	1.12 - 1.02	1.12 - 1.02	1.12 - 1.02	
Sound pressure level	dB(A)	Phi 33 Hi 31 Mi 29 Lo 27	Phi 34 Hi 31 Mi 29 Lo 27	Phi 35 Hi 33 Mi 31 Lo 27	Phi 38 Hi 33 Mi 31 Lo 27	Phi 47 Hi 35 Mi 32 Lo 28	Phi 49 Hi 38 Mi 36 Lo 31	Phi 49 Hi 39 Mi 37 Lo 31	Phi 49 Hi 42 Mi 39 Lo 32	Phi 49 Hi 42 Mi 39 Lo 33	
Sound power level	dB(A)	49	49	50	55	62	65	66	66	66	
External dimensions (HxLxD)		Unit 236x840x840				Unit 298x840x840					
Exterior appearance		Panel 35x950x950									
Munsell colour		Chalk white / black (6.8Y8.9 / 0.2) similar									
Net weight	kg	Unit 20 Panel 5			Unit 21.5 Panel 5			Unit 25 Panel 5			
Refrigerant circuit/Heat exchanger		Pipes finned and grooved internally									
Refrigerant control		Electronic expansion valve									
Air treatment/fan type and quantity		Turbo fan x 1									
Motor	W	58	58	58	58	58	120	120	120	120	
Starting method		Direct, in line									
Air flow (standard)	m ³ h	Phi 900 Hi 840 Mi 720 Lo 600	Phi 960 Hi 840 Mi 720 Lo 600	Phi 1020 Hi 900 Mi 780 Lo 600	Phi 1200 Hi 960 Mi 780 Lo 660	Phi 1680 Hi 1020 Mi 840 Lo 720	Phi 2220 Hi 1500 Mi 1320 Lo 900	Phi 2280 Hi 1560 Mi 1380 Lo 1020	Phi 2280 Hi 1680 Mi 1500 Lo 1080	Phi 2280 Hi 1740 Mi 1560 Lo 1140	
Static pressure		0									
Renewal air inlet		Possible									
Air filter and quantity		Plastic mesh filter x 1 (washable)									
Shock and vibration absorption		Rubber vibration absorber (for fan motor)									
Thermal and acoustic insulation		Polyurethane foam									
Optional control devices		Optional wired remote control RC-E5, optional RCH-E3, optional RC-EX3A Remote control kit: RCN-T-5BW-E2 white; RCN-T-5BB-E2 black									
Ambient temperature control		Electronically-controlled thermostat									
Safety devices		Overvoltage protection for the fan motor Anti-frost protection thermostat									
Diameter refrigerant pipes		Liquid side: ø6.35 (1/4") Gas side: ø9.52 (3/8")				Liquid side: ø9.52 (3/8") Gas side: ø15.88 (5/8")					
Joining method		by flare fittings									
Refrigerant		R410A									
Drain pump		Built-in									
Condensate drain		Connectable with VP25					Connectable with VP25				
Piping insulation		Necessary (on both sides, liquid and gas)									
Accessories included		Assembly kit, Condensate pipe									
Wi-Fi module		INWFIMHI001R000									