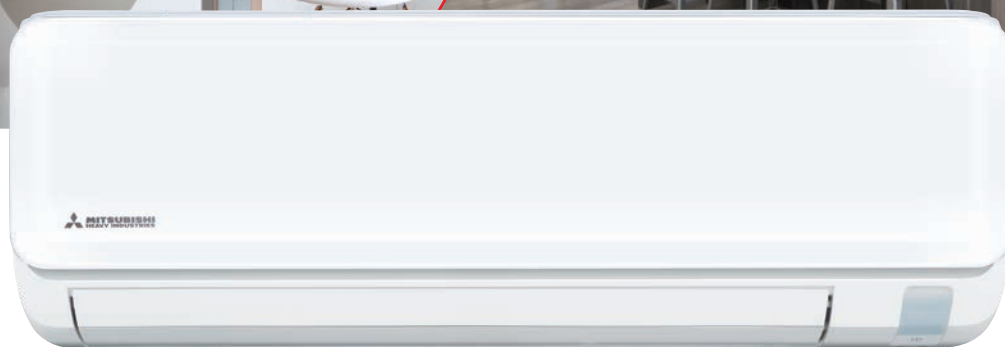


# KIREIA EVO

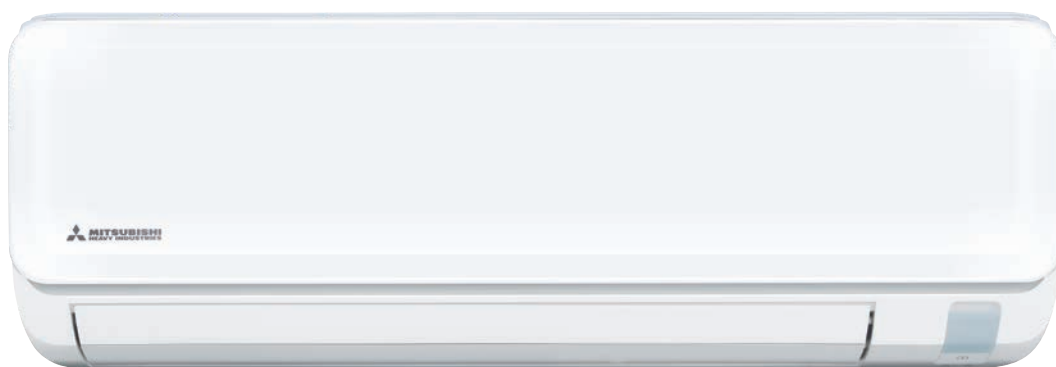
## MONOSPLIT R32



[www.mitsubishi-termal.it](http://www.mitsubishi-termal.it)

# ELEGANT AND TIMELESS DESIGN

Kireia Evo is the air conditioner with a clean, minimalist design that fits well with classic and modern home furnishings. The design of its casing is made in Italy and contains a Japanese technological core.



## HIGH ENERGY EFFICIENCY

Energy saving in all seasons.

### A++

Energy Efficiency Class in cooling  
SEER 7.50  
(6.30 kW)

### A++

Energy Efficiency Class in heating  
SCOP 4.70  
(2.50-3.50 kW)

## OPERATING RANGE

Wide operability for all sizes.

up to **46°C**  
in cooling

up to **-15°C**  
in heating

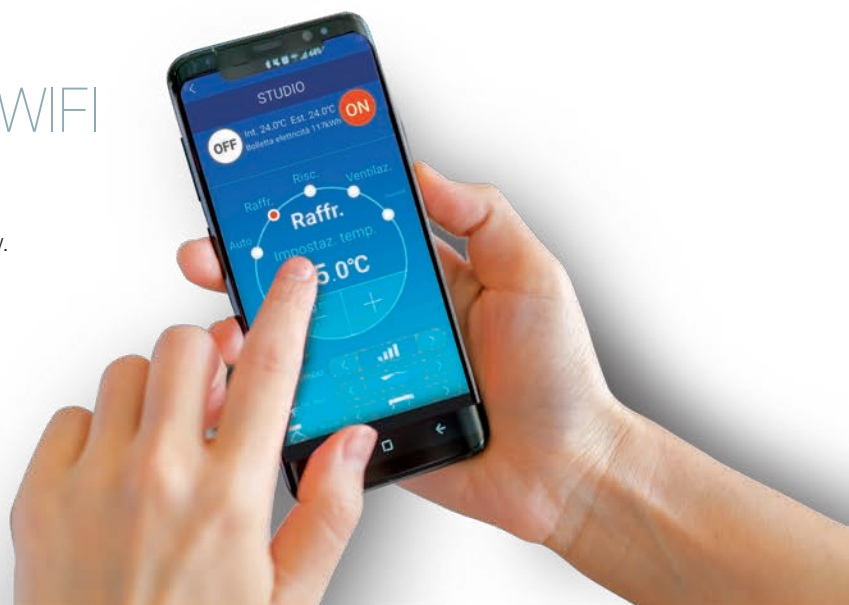
## SILENT AIRFLOW

Extremely silent operation.

only **19 dB(A)**  
(1.50-2.00 kW)

## EVERYTHING IS UNDER CONTROL WITH SMART WIFI

Set the air conditioner wherever you are directly from your smartphone: switch it on, switch it off, set operating mode, and adjust temperature and airflow.



# ADVANCED FEATURES: A FRESH WIND OF BENEFITS

Compact dimensions combined with a wide range of power sizes make Kireia Evo the ideal air conditioner for both small, well-insulated rooms and more spacious ones.

## HIGH POWER, TURBO FUNCTION

A powerful air supply that quickly brings the room to the desired temperature.

## WEEKLY TIMER

Up to 4 timer programmes are available for each day of the week. Up to 28 programmes per week can be set.

## NIGHT SET-BACK MODE

During cold seasons it keeps the temperature at a comfortable level when you are away, at night and when the room is empty.

## SLEEP TIMER NIGHT FUNCTION

Modulates the activity of the air conditioner at night, ensuring energy saving.

## BRIGHTNESS ADJUSTMENT

The brightness of the display can be adjusted according to your preferences.

## COMFORT START-UP

The air conditioner turns on before you return home, giving you warmth in winter and a pleasant coolness in summer.

## HUMIDITY UNDER CONTROL

Dehumidification removes humidity from the air, lowering the perceived temperature during the summer period.

## YOUR PREFERENCES AT THE CLICK OF A BUTTON!

The 'Pre-Set' function stores and recalls the last selected settings for a complete comfort.



## NEW REMOTE CONTROL

Easy to use even at night with backlighting, Kireia Evo's new remote control quickly manages all the air conditioner functions.

The temperature can be adjusted in half-degree steps.

## LARGE, SILENT FLOW WITH JET AIR TECHNOLOGY

Aircraft technology for wide and silent airflow. MHI has used the same aerodynamic analysis technology in developing jet engines for its air conditioners.

## ALLERGEN CLEAR FILTER, BREATHE HEALTHY AIR

Well-being also passes through the air we breathe. Kireia Evo makes our environment comfortable by sanitising the air. The Allergen Clear air filter, made by MHI, captures a wide range of germs, allergens and viruses linked to important health complications, including the risk of Coronavirus infection.



# KIREIA EVO MONOSPLIT

Wall

NEW 2022



SRK 63-71 ZTL-W



SRC 15 ZTL-W  
SRC 20 ZTL-W  
SRC 25 ZTL-W  
SRC 35 ZTL-W



SRC 50 ZTL-W



SRC 63-71 ZTL-W

SRK 15-50 ZTL-W



<RC INCLUDED>



<INCLUDED>



<ALLERGEN CLEAR FILTER>

Indoor unit model			SRK 15 ZTL-W	SRK 20 ZTL-W	SRK 25 ZTL-W	SRK 35 ZTL-W	SRK 50 ZTL-W	SRK 63 ZTL-W	SRK 71 ZTL-W	
Outdoor unit model			SRC 15 ZTL-W	SRC 20 ZTL-W	SRC 25 ZTL-W	SRC 35 ZTL-W	SRC 50 ZTL-W	SRC 63 ZTL-W	SRC 71 ZTL-W	
<b>Nominal data</b>										
Rated capacity (T=+35°C)	Cooling	kW	1.50 (0.80~2.50)	2.00 (0.80~2.80)	2.50 (0.80~3.20)	3.50 (0.80~3.70)	5.00 (1.30~5.30)	6.30 (1.20~7.10)	7.10 (1.20~7.30)	
		Rated absorbed power (T=+35°C)	kW	0.35 (0.20~0.85)	0.52 (0.20~0.92)	0.58 (0.19~0.95)	1.05 (0.19~1.30)	1.59 (0.29~1.77)	1.84 (0.27~2.43)	2.45 (0.28~2.67)
		Rated energy efficiency coefficient	EER <sup>1</sup>	4.29	3.92	4.31	3.33	3.14	3.42	2.90
Rated capacity (T=+7°C)	Heating	kW	2.00 (0.90~4.10)	2.70 (0.90~4.20)	3.00 (1.00~4.80)	3.80 (1.00~4.90)	5.80 (1.30~6.30)	7.10 (1.00~8.50)	8.00 (1.10~9.10)	
		Rated absorbed power (T=+7°C)	kW	0.42 (0.21~1.39)	0.64 (0.21~1.40)	0.66 (0.21~1.48)	0.90 (0.21~1.50)	1.62 (0.27~2.04)	2.01 (0.25~2.89)	2.37 (0.26~3.30)
		Rated energy performance coefficient	COP <sup>1</sup>	4.76	4.22	4.55	4.22	3.58	3.53	3.38
<b>Seasonal data</b>										
Seasonal energy efficiency index / class	Cooling	SEER <sup>2</sup> / 626/2011 <sup>3</sup>	6.40 / A++	6.70 / A++	6.90 / A++	6.50 / A++	6.50 / A++	7.50 / A++	7.10 / A++	
Seasonal energy efficiency index / class	Heating (average climate conditions)	SCOP <sup>2</sup> / 626/2011 <sup>3</sup>	4.40 / A+	4.40 / A+	4.70 / A++	4.70 / A++	4.30 / A+	4.60 / A++	4.40 / A+	
Refrigerant (GWP) <sup>4</sup> / Quantity refrigerant pre-load (kg) / t CO <sub>2</sub> eq.			R32 (675) / 0.43 / 0.290	R32 (675) / 0.43 / 0.290	R32 (675) / 0.59 / 0.398	R32 (675) / 0.59 / 0.398	R32 (675) / 0.9 / 0.606	R32 (675) / 1.2 / 0.810	R32 (675) / 1.2 / 0.810	
Max splitting length		m	20	20	20	20	25	30	30	
Max height difference I.U./O.U.		m	15	15	15	15	20	20	20	
Split length without additional charge		m	10	10	10	10	15	15	15	
<b>Indoor unit specifications</b>										
Dimensions	LxDxH	mm	798x210x294	798x210x294	798x210x294	798x210x294	798x210x294	998x230x294	998x230x294	
Net weight		Kg	8.5	8.5	9	9	9.5	12	12	
Sound power level	Max	dB(A)	53	54	55	57	60	60	61	
Sound pressure level (Hi/Me/Lo/ULo)	Cooling	dB(A)	36/30/23/19	37/31/23/19	41/36/26/22	42/37/27/22	47/40/32/25	46/43/38/30	48/44/39/31	
	Heating	dB(A)	38/32/24/19	39/34/25/19	41/36/29/22	43/37/31/22	47/40/33/25	47/43/39/32	47/44/40/33	
Treated air volume (Hi/Me/Lo/ULo)	Cooling	m <sup>3</sup> /h	570/450/294/228	594/468/294/228	600/480/318/264	624/510/330/264	750/624/432/324	1020/882/726/564	1050/912/756/564	
	Heating	m <sup>3</sup> /h	600/522/348/264	624/546/372/264	660/564/390/300	708/588/408/300	756/690/534/384	1104/1032/846/696	1134/1062/876/696	
<b>Outdoor unit specifications</b>										
Dimensions	LxDxH	mm	645(+57)x275x540	645(+57)x275x540	645(+57)x275x540	645(+57)x275x540	780(+62)x290x595	800(+71)x290x640	800(+71)x290x640	
Net weight		Kg	19.5	19.5	21.5	21.5	31.5	42.5	42.5	
Sound power level / Sound pressure level	Max	dB(A)	57 / 44	58 / 46	59 / 47	62 / 50	65 / 53	66 / 54	66 / 54	
Treated air volume	Max	m <sup>3</sup> /h	1776	1776	1302	1446	2028	2580	2580	
Operating limits (outside temperature)	Cooling / Heating	°C	-15~46 / -15~24							
<b>Optional parts</b>										
Wi-Fi module			Included							
Interface for home automation connection and wired control <sup>5</sup>			SC-BIKN2-E							

1. 2. 3. 4. 5. For standards, please refer to the MHI general catalogue.

06-2023



TERMAL srl | via della Salute 14  
40132 | Bologna | Italia  
[www.mitsubishi-termal.it](http://www.mitsubishi-termal.it)

