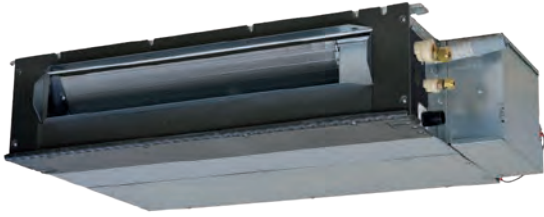


INDOOR UNITS

Low head ducted

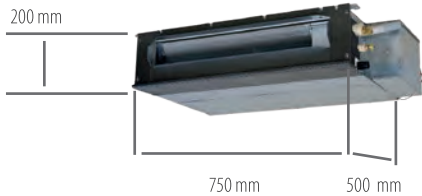


● **7 power sizes**
(1.50~7.10 kW)

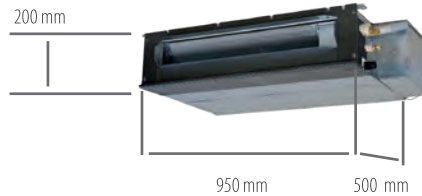
- Ideal for applications in hotels, hospitals and small offices
- Optional filter kit: UT-FL1EF (FDUT 15~36); UT-FL2EF (FDUT 45~56); UT-FL3EF (FDUT 71)
- Ducting flange: UT-SAT1EF (FDUT 15~36); UT-SAT2EF (FDUT 45~56); UT-SAT3EF (FDUT 71)
- "Human sensor": LB-KIT2

FDUT 15~71KXE6F-E

COMPACT SIZE



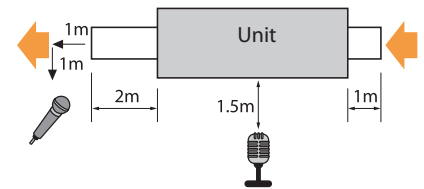
models FDUT 15, 22, 28, 36 KXE6F



models FDUT 45, 56 KXE6F

VERY QUIET OPERATION

Extremely quiet: only 22 dB(A) for models from 1.50~2.80 kW



Model		FDUT 15KXE6F-E	FDUT 22KXE6F-E	FDUT 28KXE6F-E	FDUT 36KXE6F-E	FDUT 45KXE6F-E	FDUT 56KXE6F-E	FDUT 71KXE6F-E
		Rear recovery						
Nominal Cool. capacity	kW	1.50	2.20	2.80	3.60	4.50	5.60	7.10
Nominal Heat. capacity	kW	1.70	2.50	3.20	4.00	5.00	6.00	8.00
Power		220-240V~50Hz						
Cool. power consumption	kW	0.06 - 0.06	0.07 - 0.07	0.07 - 0.07	0.07 - 0.07	0.08 - 0.08	0.08 - 0.08	0.08 - 0.08
Heat. power consumption	kW	0.06 - 0.06	0.07 - 0.07	0.07 - 0.07	0.07 - 0.07	0.08 - 0.08	0.08 - 0.08	0.07 - 0.07
Rated current in Cool.	A	0.27 - 0.27	0.28 - 0.25	0.28 - 0.25	0.32 - 0.29	0.36 - 0.33	0.38 - 0.35	0.42 - 0.42
Rated current in Heat.	A	0.27 - 0.27	0.29 - 0.25	0.29 - 0.25	0.33 - 0.28	0.34 - 0.32	0.35 - 0.33	0.46 - 0.46
Sound pressure level	dB(A)	Hi 28 Mi 26 Lo 22			Hi 33 Mi 30 Lo 26	Hi 34 Mi 32 Lo 28	Hi 35 Mi 33 Lo 30	Hi 35 Mi 31 Lo 28
Sound power level	dB(A)	52			57	58	59	59
External dimensions (HxLxD)	mm	200x750x500				200x950x500		220x1150x565
Net weight	kg	21			22	25		31
Refrigerant circuit/Heat exchanger	Pipes finned and grooved internally							
Refrigerant control	Electronic expansion valve							
Air treatment/fan type and quantity	Centrifugal fan x 2						Centrifugal fan x 3	Centrifugal fan x 4
Motor	W	14			38			100
Starting method	Direct, in line							
Air flow (standard)	m ³ /h	Hi 360 Mi 300 Lo 240	Hi 450 Mi 360 Lo 300		Hi 510 Mi 420 Lo 330	Hi 690 Mi 540 Lo 420	Hi 750 Mi 540 Lo 432	Hi 960 Mi 780 Lo 570
Static pressure	Pa	St. 10 Max 35						St. 10 Max 50
Renewal air inlet	Not possible							
Air filter and quantity	UT-FL1EF (Optional)						UT-FL2EF (Optional)	UT-FL3EF (Optional)
Shock and vibration absorption	Rubber sleeve (for fan motor)							
Thermal and acoustic insulation	Polyurethane foam							
Control devices	Optional wired remote control RC-E5, optional RCH-E3, optional RCN-KIT4-E2, optional RC-EX3A, optional RC-EXZ3A							
Ambient temperature control	Electronically-controlled thermostat							
Safety devices	Thermal protection for the fan motor							
	Anti-frost protection thermostat							
Diameter refrigerant pipes	mm (inch)	Gas side: ø 9.52 (3/8")			Liquid side: ø 6.35 (1/4")		Gas side: ø 12.7 (1/2")	
							Liquid side: ø 9.52 (3/8")	
							Gas side: ø 15.88 (5/8")	
Joining method	by flare fittings							
Refrigerant	R410A							
Drain pump	Built-in							
Condensate drain	Connectable with VP25							
Piping insulation	Necessary (on both sides, liquid and gas)							
Accessories	Assembly kit, UT-SAT1EF (Flange)						Assembly kit, UT-SAT2EF (Flange)	Assembly kit, UT-SAT3EF (Flange)
Wi-Fi module	INWFMIH001R000							